



IMAGES IN INTENSIVE MEDICINE

Acute aneurysmal rupture in a severe SAH patient seen on head CT angiography scan ☆



Rotura aneurismática aguda en paciente con HSA grave objetivada en AngioTC craneal

R. Bellido-Alba ^{a,*}, J.J. Egea-Guerrero ^{a,b}, A. Lopez-Gonzalez ^c

^a Unidad de Cuidados Neurocríticos, Hospital de Rehabilitación y Traumatología, Hospitales Universitarios Virgen del Rocío, Sevilla, Spain

^b Instituto de Biomedicina de Sevilla-Consejo Superior de Investigaciones Científicas, Universidad de Sevilla, Hospitales Universitarios Virgen del Rocío, Sevilla, Spain

^c Unidad de Neurocirugía, Hospital de Rehabilitación y Traumatología, Hospitales Universitarios Virgen del Rocío, Sevilla, Spain

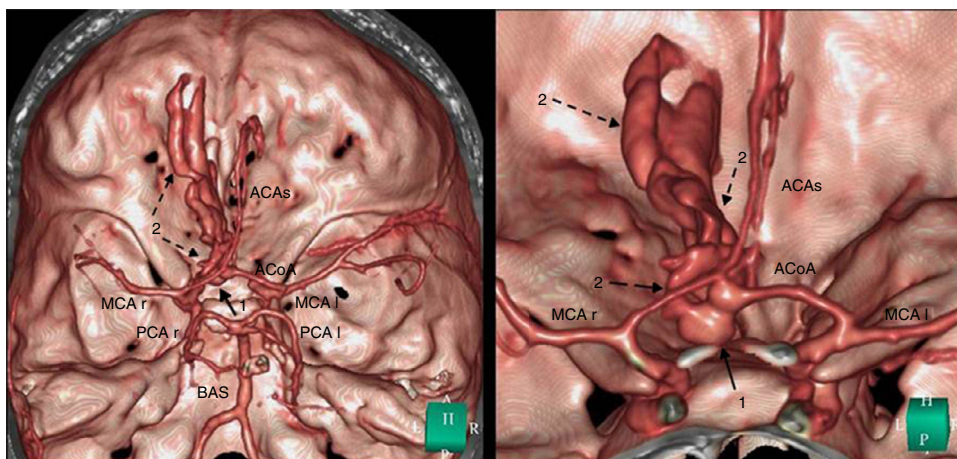


Figure 1

A 37-year-old woman with no relevant disease history was admitted to our Intensive Care Unit with a diagnosis of spontaneous subarachnoid hemorrhage (SAH) (Hunt-Hess II, Fisher IV). She suddenly suffered a decrease in consciousness to 3 points on the Glasgow coma score, with bilateral nonreactive mydriasis. A new tomographic exploration was immediately performed, including angioCT, revealing hyperacute repeat bleeding (see arrows numbered as 2, Fig. 1) originating from an aneurysm (see arrows numbered as 1, Fig. 1) dependent upon the anterior communicating artery (ACoA). Emergent neurosurgery was performed, with attempted surgical clipping, though without success. The patient unfortunately died as a result of brain death.

☆ Please cite this article as: Bellido-Alba R, Egea-Guerrero JJ, Lopez-Gonzalez A. Rotura aneurismática aguda en paciente con HSA grave objetivada en AngioTC craneal. Med Intensiva. 2017;41:199.

* Corresponding author.

E-mail address: bellidoalba@gmail.com (R. Bellido-Alba).