



IMAGES IN INTENSIVE MEDICINE

Early brain magnetic resonance imaging findings after an episode of out-of-hospital cardiac arrest



Hallazgos tempranos de resonancia magnética cerebral tras un episodio extrahospitalario de parada cardíaca

A. Jiménez-Ruiz, M. García-Grimshaw[✉], I. Reyes-Melo

Department of Neurology and Psychiatry, Instituto Nacional de Ciencias Médicas y Nutrición "Salvador Zubirán", Mexico City, Mexico

Available online 31 May 2020

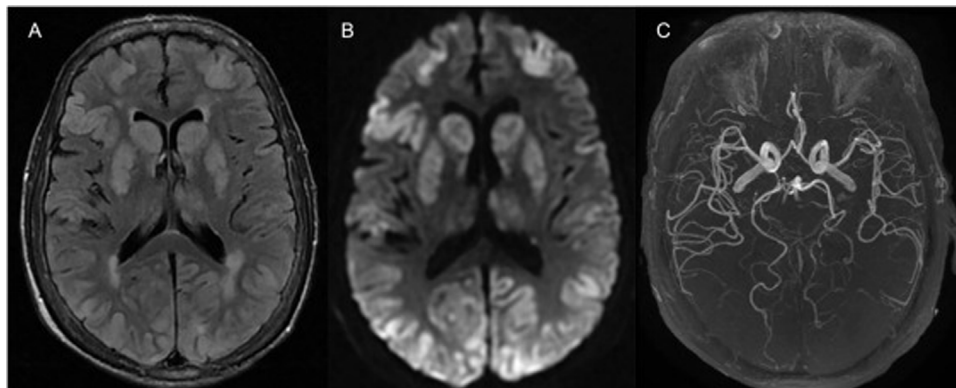


Figure 1

A 70-year-old woman with a history of chronic obstructive pulmonary disease, hypertension, and heart failure was transferred to our hospital after an episode of witnessed out-of-hospital cardiac arrest, for which she

received 20 min of cardiopulmonary resuscitation. At admission, she was comatose, requiring intubation. Neurological examination showed an absence of brainstem reflexes without any pharmacological influence. Twelve hours later, a magnetic resonance imaging (MRI) of the brain (Fig. 1) showed extensive bilateral, cortical–subcortical and basal ganglia hyperintensities on the fluid-attenuated inversion recovery sequence (A) with restricted diffusion (B) and normal arterial blood supply (C); findings consistent with hypoxic–ischemic brain injury (HIBI). The patient died 48 h

[✉] Corresponding author.

E-mail address: miguelgrimshaw@gmail.com
(M. García-Grimshaw).

after admission. The current guidelines for HIBI suggest performing a brain MRI 2–5 days after the event, however recent data shows that the diffusion-weighted imaging (DWI) sequence on an MRI can predict neurological outcomes as early as 3 h after this catastrophic event.

Consent statement

Written informed consent was obtained.

Conflict of interest

The authors declare no conflicts of interest.