



ORIGINAL ARTICLE

Psychometric validation of the behavioral indicators of pain scale for the assessment of pain in mechanically ventilated and unable to self-report critical care patients



I. Latorre-Marco^{a,*}, M. Acevedo-Nuevo^a, M. Solís-Muñoz^b, L. Hernández-Sánchez^a, C. López-López^c, M.M. Sánchez-Sánchez^d, M. Wojtysiak-Wojcicka^e, J. de las Pozas-Abril^f, G. Robleda-Font^g, M.J. Frade-Mera^h, R. De Blas-Garcíaⁱ, C. Górgolas-Ortiz^j, J. De la Figuera-Bayón^k, C. Cavia-García^l

^a Medical Intensive Care Unit, Hospital Universitario Puerta de Hierro Majadahonda, Majadahonda, Spain

^b Nursing and Healthcare, Research Area, Hospital Universitario Puerta de Hierro Majadahonda, Majadahonda, Spain

^c Emergency and Trauma Intensive Care Unit, Hospital Universitario Doce de Octubre, Madrid, Spain

^d Intensive Care Unit, Hospital Universitario de Getafe, Getafe, Spain

^e Intensive Care Unit, Hospital Universitario Quirón Madrid, Pozuelo de Alarcón, Spain

^f Intensive Care Unit, Hospital General Universitario Gregorio Marañón, Madrid, Spain

^g Intensive Care Unit, Hospital Universitario de la Santa Creu i Sant Pau, Barcelona, Spain

^h Intensive Care Unit, Hospital Universitario Doce de Octubre, Madrid, Spain

ⁱ Postsurgical Intensive Care Unit, Hospital Universitario Puerta de Hierro Majadahonda, Majadahonda, Spain

^j Postsurgical Intensive Care Unit, Hospital Universitario de Basurto, Bilbao, Spain

^k Intensive Care Unit, Hospital Universitario de La Princesa, Madrid, Spain

^l Intensive Care Unit, Hospital Universitario de Cruces, Barakaldo, Spain

Received 16 April 2016; accepted 3 June 2016

Available online 31 August 2016

KEYWORDS

Critically ill patients;
Pain assessment;
Scale;
Mechanical
ventilation;
Behavior;
Reliability;
Validity

Abstract

Objective: To assess the psychometric properties of the behavioral indicators of pain scale (ESCID) when applied to a wide range of medical and surgical critical patients.

Design: A multicentre, prospective observational study was designed to validate a scale measuring instrument.

Setting: Twenty Intensive Care Units of 14 hospitals belonging to the Spanish National Health System.

Participants: A total of 286 mechanically ventilated, unable to self-report critically ill medical and surgical adult patients.

* Corresponding author.

E-mail address: ntx.2002@yahoo.es (I. Latorre-Marco).

Procedure: Pain levels were measured by two independent evaluators simultaneously, using two scales: ESCID and the behavioral pain scale (BPS). Pain was observed before, during, and after two painful procedures (turning, tracheal suctioning) and one non-painful procedure.

Main variables: ESCID reliability was measured on the basis of internal consistency using the Cronbach- α coefficient. Inter-rater and intra-rater agreement were measured. The Spearman correlation coefficient was used to assess the correlation between ESCID and BPS.

Results: A total of 4386 observations were made in 286 patients (62% medical and 38% surgical). High correlation was found between ESCID and BPS ($r=0.94-0.99$; $p < 0.001$), together with high intra-rater and inter-rater concordance. ESCID was internally reliable, with a Cronbach- α value of 0.85 (95%CI 0.81-0.88). Cronbach- α coefficients for ESCID domains were high: facial expression 0.87 (95%CI 0.84-0.89), calmness 0.84 (95%CI 0.81-0.87), muscle tone 0.80 (95%CI 0.75-0.84), compliance with mechanical ventilation 0.70 (95%CI 0.63-0.75) and consolability 0.85 (95%CI 0.81-0.88).

Conclusion: ESCID is valid and reliable for measuring pain in mechanically ventilated unable to self-report medical and surgical critical care patients.

Clinicaltrials.gov: NCT01744717.

© 2016 The Authors. Published by Elsevier España, S.L.U. This is an open access article under the CC BY-NC-ND license (<http://creativecommons.org/licenses/by-nc-nd/4.0/>).

PALABRAS CLAVE

Paciente crítico;
Dolor;
Escala;
Ventilación
mecánica;
Conductual;
Fiabilidad;
Validez

Validación psicométrica de la Escala de Conductas Indicadoras de Dolor para la medición de dolor en pacientes críticos, no comunicativos y sometidos a ventilación mecánica

Resumen

Objetivo: Evaluar las propiedades psicométricas de la Escala de Conductas Indicadoras de Dolor (ESCID), aplicada a una muestra amplia de pacientes críticos de patología médica y posquirúrgica.

Diseño: Estudio multicéntrico, observacional, prospectivo de validación de una escala como instrumento de medida.

Ámbito: Veinte Unidades de Cuidados Intensivos de 14 hospitales del Sistema Nacional de Salud español.

Participantes: Doscientos ochenta y seis pacientes críticos adultos, sometidos a ventilación mecánica, sin capacidad de comunicación, de patología médica y posquirúrgica.

Intervención: Se midió el nivel de dolor de los pacientes por 2 observadores de manera simultánea y utilizando dos escalas: ESCID y la *Behavioral Pain Scale*. El dolor fue medido antes, durante y después de la aplicación de dos procedimientos dolorosos (movilización y aspiración endotraqueal) y un procedimiento no doloroso.

Variables de interés: La fiabilidad de ESCID se midió mediante la consistencia interna determinada con el coeficiente alfa de Cronbach. Se midió la concordancia inter- e intraobservadores. Se determinó la correlación entre las escalas ESCID y *Behavioral Pain Scale* mediante el coeficiente de Spearman.

Resultados: Se realizaron 4.386 observaciones de dolor en 286 pacientes (62% patología médica y 38% posquirúrgica). Se evidencia una alta correlación entre ESCID y *Behavioral Pain Scale* ($r=0.94-0.99$; $p < 0.001$) así como una alta concordancia inter- e intraobservador. La escala ESCID presenta buena consistencia interna, con un valor de α -Cronbach de 0,85 (IC 95% 0,81-0,88). Los 5 dominios de ESCID presentan alta consistencia interna con α -Cronbach: musculatura facial 0,87 (IC 95% 0,84-0,89), tranquilidad 0,84 (IC 95% 0,81-0,87), tono muscular 0,80 (IC 95% 0,75-0,84), adaptación a ventilación mecánica 0,70 (IC 95% 0,63-0,75) y confortabilidad 0,85 (IC 95% 0,81-0,88).

Conclusión: ESCID es válida y fiable para medir el dolor en pacientes críticos médicos y posquirúrgicos, no comunicativos y sometidos a ventilación mecánica.

Clinicaltrials.gov: NCT01744717.

© 2016 Los Autores. Publicado por Elsevier España, S.L.U. Este es un artículo Open Access bajo la licencia CC BY-NC-ND (<http://creativecommons.org/licenses/by-nc-nd/4.0/>).

Introduction

The incidence of pain in adult critical care patients is higher than 50% and it can be experienced at rest or during routine clinical care procedures¹⁻⁵. Inadequate management of pain is associated with a stress response that includes changes in physiological parameters, neuro-endocrine secretion and immunomodulation^{6,7}. It is also associated with agitation⁸ and sleep pattern alterations⁹, and it can be a contributing risk factor for delirium¹⁰ and post-traumatic stress disorder in critical care patients¹¹.

The systematic evaluation of pain integrated in the pain-agitation-delirium (PAD) management protocols has been associated with reductions in the incidence of pain, use of analgesics, duration of mechanical ventilation (MV) and length of stay (LOS) in the Intensive Care Unit (ICU)^{1,12-15}. Adequate pain treatment necessarily requires the use of reliable tools that aid in its detection and measurement^{16,17}.

Recent international guidelines recommend the use of scales based on behavioral indicators of pain for patients who are unable to self-report, provided that their motor function is preserved and behaviors are observable^{18,19}. For these patients, the behavioral pain scale (BPS)²⁰ and the critical care pain observation tool (CPOT)^{21,22} are recommended due to their psychometric properties^{17,23}.

In 2011, Latorre et al.²⁴ validated a new tool, the behavioral indicators of pain scale or ESCID from its acronym in Spanish, as a useful tool for assessing pain in mechanically ventilated and unable to self-report critically ill adult patients. The ESCID scale was developed after the original Campbell scale, proposed by The Analgesia and Sedation Working Group of the Spanish Society of Intensive Care Medicine and Coronary Units, taking in to account that the Campbell scale could be an appropriate instrument to assess pain and quantify its intensity in non-communicative, critically ill patients²⁵. However, the Campbell scale has two limitations: it is not been subjected to validation studies in critically ill patients and it is not applicable to patients with mechanical ventilation because it does not include it as an indicator. In the validated version of the ESCID scale, the indicator 'vocalization' from the original Campbell scale was replaced by 'compliance with mechanical ventilation'. Additionally, each indicator of the scale was more precisely defined and quantified to minimize subjectivity of the observer. The ESCID scale provides a greater number of behavioral indicators, which can help decrease the artifacts produced by causes unrelated to pain, considering the positive correlation between the number of behavioral indicators exhibited by the patient and pain shown²⁶.

The ESCID scale has shown good psychometric properties: the internal consistency measured with the Cronbach's Alpha Coefficient was 0.70-0.80; a high correlation between ESCID and BPS scales; and good interrater and intrarater reliability. However, the ESCID scale validation study has some limitations that affect its external validity, as is the fact that it was conducted in a single ICU with a sample of 42 critical care patients with exclusively medical pathologies²⁴.

The interest of the current study is to determine the psychometric properties of the ESCID scale when applied to a wide range of medical and surgical critical care patients in various ICUs of different hospitals²⁷. Our primary hypothesis

is that the ESCID scale is a valid and reliable tool for measuring pain in mechanically ventilated and unable to self-report critical care patients.

This study pretends to validate the ESCID scale by addressing the following research objectives: (a) to assess interrater agreement when using pain scales; (b) to assess intrarater agreement when using pain scales in repeated measures for the same patient; (c) to examine the correlation between the ESCID scale and the BPS while using them simultaneously in the same patient and at the same time, when patients are exposed to a non-nociceptive procedure and two nociceptive procedures; (d) to examine the relationship between applying a painful routine care procedure and the changes in physiological indicators of pain; (e) to evaluate the possible differences in the application of the scales for measuring pain in patients with medical and surgical pathologies; and (f) to evaluate the possible differences in the application of scales to measure pain in patients with different levels of sedation.

Patients and methods

Multicenter, prospective and observational study to validate a scale-measuring instrument was conducted in 20 Intensive Care Units of 14 Spanish National Health System hospitals with different types of patients admitted for medical and surgical pathologies. The study was initiated in January 2012 and finalized in January 2014²⁷. The protocol was approved by the Clinical Investigation Ethics Committee of *Puerta de Hierro Majadahonda University Hospital* (Spain), the coordinating center (University Hospital Ethics Committee, record n° 273, January 23, 2012), and all corresponding Ethics Committees in each hospital participating in the study.

Written informed consent was obtained from the next of kin or the patient's legal guardian, and was ratified afterwards by the patient itself. To maintain anonymity and guarantee confidentiality, all participants were identified by a code number that was maintained throughout the study.

Study population

Inclusion criteria were: age ≥ 18 years; receiving MV; showing no motor or verbal communication; ability to understand the Spanish language; and the presence of a legal guardian with the authority to give consent to the patient's participation in the study if the patient was unable to do so.

Exclusion criteria were: quadriplegia; severe polyneuropathy; treatment with neuromuscular blocking agents; neurological disease that resulted in a score < 4 in the motor section of the Glasgow Coma Scale (GCS); and the suspicion or presence of delirium assessed using the Confusion Assessment Method for the ICU. All these conditions resulted in study exclusion as they had the potential to alter a patient's behavioral responses to pain.

Protocol

A group of nurses from each of the ICU were responsible for collecting data. All the ICU nurses implicated in the study received a 90 min debrief where the principal investigator discussed the recruitment of patients, the Informed Consent

form, the study procedures, correct use of the ESCID and BPS scales²⁷, and the data collection.

Prior to commencing the study, a pilot trial was carried out in each ICU (5 patients per unit) to detect any possible difficulties that might arise so that they could be remedied beforehand.

Pain was assessed using two scales, BPS²⁰ and ESCID (Table 1), simultaneously applied by two independent observers who were blinded to each other's assessments. Observations coincided with the application of two routine care procedures previously documented as painful²⁶: turning/repositioning and endotracheal suctioning. Furthermore, to achieve greater consistency and establish a comparative element, as proposed in other studies^{20,28,29}, the same pain assessment was carried out by applying a non-painful procedure that consisted on gently rubbing a gauze cloth over a portion of the patient's healthy skin tissue.

To avoid any possible bias, pain measurement was performed once for each patient and procedure. All the patients were free of physical restraints during the pain assessments, in order to avoid bias in the evaluation of the body movements as behaviors of pain.

Pain assessment was carried out at 3 time points as follows:

- First measurement (at rest): 5 min before starting the procedure.
- Second measurement: during the procedure (turning/repositioning and non-painful procedure) or

10–30 s after completing the procedure (endotracheal suctioning).

- Third measurement: 15 min after the procedure was completed.

Measures and data collection

The following independent variables were obtained from each participant through continuous hemodynamic monitoring, the patient's clinical history and direct observation:

- Demographic data: age, gender.
- Clinical data: heart rate, invasive blood pressure, and respiratory rate. Sedation and analgesic medication administered during the previous 24 h by both continuous infusion and bolus were recorded as well as the scores from the Richmond sedation agitation scale (RASS). For patients with neurological disorders, the GCS was applied before the procedure. In addition, the following clinical data were collected: current pathology, reason for ICU admission, medical history (comorbidities, history of chronic pain, chronic use of analgesics) and severity index determined by simplified acute physiology score (SAPS II).

The ESCID and BPS scales were used to measure the pain level as dependent variables.

Statistical analysis

The sample size was calculated by assuming several criteria: (1) taking into account that multivariable techniques, such as factor analysis, usually require at least 10 participants per variable to achieve replicable findings³⁰; (2) given the heterogeneity of critical care medical and surgical patients, the aim was to ensure sufficient participation to obtain a representative sample; (3) to guarantee the accuracy of the measurements by reducing any possible bias; and (4) more than 50 participants as a quality criterion for testing scale: construct validity¹⁷.

Measurement of psychometric properties

Psychometric properties related to the use of the pain assessment tools were determined using the recommendations made by Gélinas et al.¹⁷, which proposed the use of established scales as published in recent guidelines^{18,19}.

Internal consistency

ESCID reliability was measured by the internal consistency of each item using Cronbach's Alpha Coefficient. A Cronbach- α value higher than 0.7 reflects a satisfactory internal consistency, which is a high inter-relation between each domain of the tool. For greater consistency, the calculation considered the mean of the assessments of each item at the three time points in which the scale was used (before, during and after the procedure).

Interrater and intrarater reliability

Repeated measures analysis of variance (ANOVA) was used to analyze interrater and intrarater agreement through

Table 1 The behavioral indicators of pain scale (ESCID).

<i>Behavioral indicators of pain scale (ESCID)</i>	
Number of observation domains	5
Number of descriptors per domain	3
Rated per descriptor	0–2
Total score	0–10
<i>Facial expression</i>	
	Score
Relaxed	0
Tense, frowning/grimacing	1
Regularly frowning/clenched jaw	2
<i>Calmness</i>	
Calm, relaxed, normal movements	0
Occasional restless movement, shifting position	1
Frequent movement, including head or limbs	2
<i>Muscle tone</i>	
Normal	0
Increased. Flexion of fingers and/or toes	1
Rigid	2
<i>Compliance with mechanical ventilation (MV)</i>	
Tolerates MV	0
Coughs, however, tolerates MV	1
Fights with the respirator	2
<i>Consolability</i>	
Comfortable, quiet	0
Reassured by touch or talk. Distractible	1
Difficult to comfort by touch or talking	2

comparing the components of the ESCID and BPS scales, to measure the changes between the results obtained according to the time, observer and procedure.

Discriminant validation

Discriminant validation was determined by comparing total scores obtained during different situations and stimuli, i.e., at rest and during a procedure (turning/repositioning, endotracheal suctioning or non-painful procedure). The main effects of the three original variables (procedure, time and observer) were compared as were the three first-order interactions (time \times procedure, time \times observer and procedure \times observer).

Convergent validation

Convergent validation is another strategy for verifying reliability and validity of the use of pain assessment tools. Refers to the ability of the assessment tool to correlate with another tool, ideally using a different method, measuring the same construct (i.e., pain). The BPS is considered one of the most valid and reliable scales available to evaluate pain in non-communicative ICU patients (Cronbach- α 0.63–0.72, Kappa coefficients 0.67–0.83)^{17,18}.

Spearman's correlation coefficient was used to evaluate the correlation between the ESCID and BPS scales in terms of the measurements taken before, during and after each procedure.

Presentation of data

Quantitative data are shown as frequencies, percentages, means, medians, standard deviations and 25th and 75th percentiles (p25 and p75). Inference using the *t*-test and Spearman's correlation were applied to explore the association between the level of pain and the independent variables. Analysis of variance (ANOVA) was used to compare the means of more than two groups. All the multiple comparison tests were adjusted by means of Bonferroni correction. A *p* value of <0.05 was considered statistically significant.

Graphic representation of the pain variable according to the ESCID scale (Fig. 2) is shown using a box-plot approach. Each box shows p25, median and p75. Each whisker covers values 1.5 times the interquartile range and the circles represent the extreme values (outliers).

Data were analyzed using SPSS software (v.19.0. SPSS Inc. Chicago, IL, USA).

Results

Two hundred eighty-six patients from 20 ICUs were included during the recruitment period. During the study period, 4386 observations were recorded by 150 observers. A consort flow chart of patient enrolment is shown in Fig. 1. The patients' characteristics are shown in Table 2.

Finally, 190 patients completed the pain assessments in all of three procedures proposed in the study, resulting in 3420 observations being recorded and included in the analysis (Fig. 1). These patients had similar characteristics to those defined for the study population (Table 2).

Internal consistency

ESCID presented a high reliability with a Cronbach- α coefficient of 0.85 [95% confidence interval (CI), 0.81–0.88]. The facial expression [0.87 (95%CI 0.84–0.89)], calmness [0.84 (95%CI 0.81–0.87)], muscle tone [0.80 (95%CI 0.75–0.84)] and consolability [0.85 (95%CI 0.81–0.88)] domains presented a high internal consistency with a Cronbach- α coefficients \geq 0.80. The compliance with mechanical ventilation domain presented good internal consistency [0.70 (95%CI 0.63–0.75)].

On evaluating the reliability of the ESCID scale with respect to the type of ICU admittance, it was observed that the internal consistency of the scale was greater in medical patients: the Cronbach- α coefficient was 0.85 (95%CI 0.81–0.89) for medical patients and 0.80 (95%CI 0.73–0.86) for surgical patients.

When evaluating the reliability of the ESCID scale with respect to the sedation level (measured by RASS), it was observed that the internal consistency of the scale was reduced in patients with the highest level of sedation (RASS score -5 , unarousable patients) with a Cronbach- α coefficient of 0.63 (95%CI 0.55–0.71).

Interrater and intrarater reliability

There was a high interrater and intrarater conformity when the ESCID scale was applied at the three moments of each procedure (Fig. 2). There were no statistically significant intrarater differences ($p=0.241$), however differences were observed between procedures ($p<0.001$) given that the values were similar for painful procedure but differed for non-painful ones. The values show evaluation of increased pain during the application of painful procedures which normalized in the measurement taken 15 min after. However, there were no changes in the pain levels at the three moments during non-painful procedures.

The median punctuation of the ESCID and BPS scales (Table 3) demonstrate a difference of 0.0 or 0.1 points between the two observers at the three measuring time points. These results demonstrate a high intrarater and interrater conformity.

Discriminant validation

The response to pain as measured by the ESCID and BPS scales differs over time ($p<0.001$). When performing Bonferroni's multiple comparison test, it can be seen that this difference is due to increased mean pain scores during the painful procedures with respect to the measurements taken before and after, with no statistically significant differences between the latter two. On the other hand, there were no variations during the non-painful procedure (Table 3, Fig. 2) which establishes that there were differences in the procedure factor ($p<0.001$), but no differences in the observer factor ($p>0.5$).

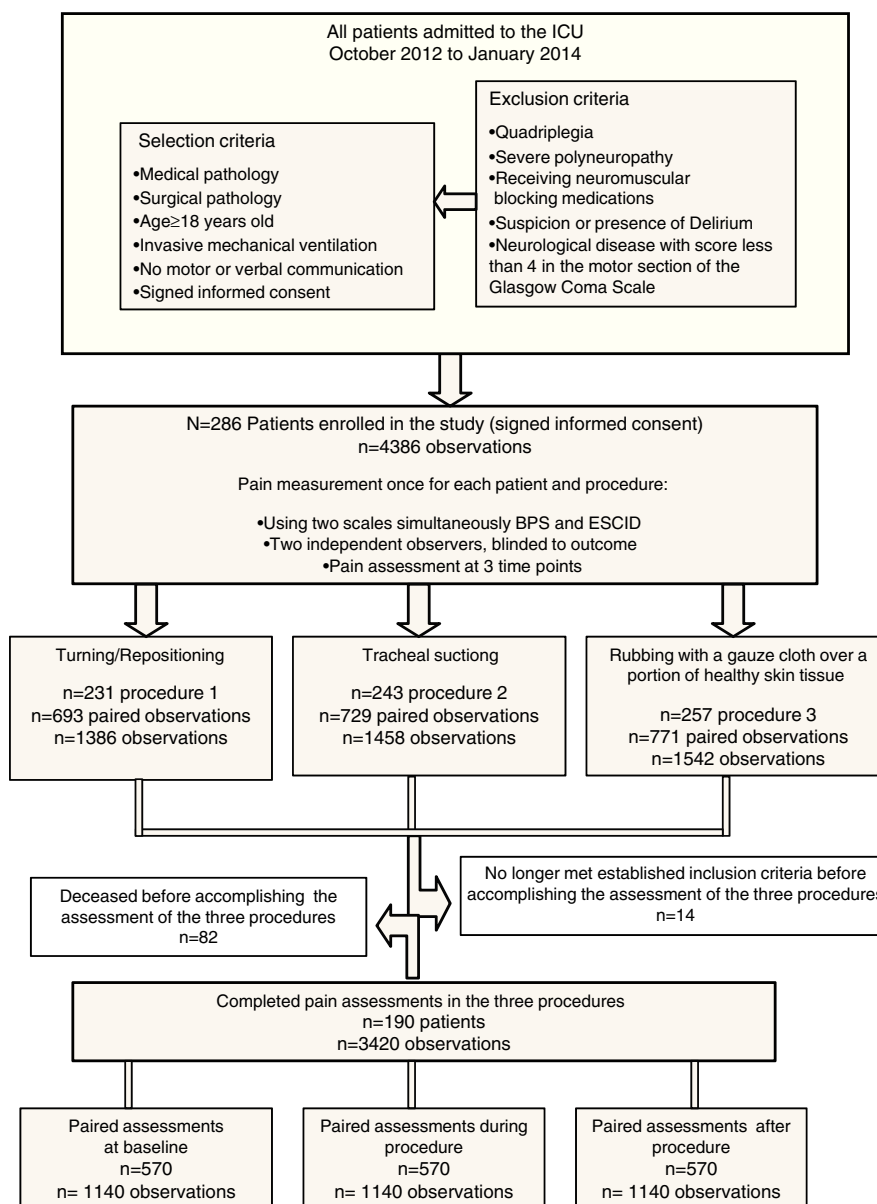


Figure 1 Study flow chart.

Convergent validation

There was a good correlation between the ESCID and BPS scales when applied at the three moments during each procedure. Spearman's correlation between the ESCID and BPS scales was $r = 0.94-0.99$ ($p < 0.001$). Taking time changes into consideration, Spearman's correlation between the two scales prior to the procedure was $r = 0.96$, during $r = 0.95$, and after $r = 0.96$.

Other relevant results

There were no statistically significant differences between pain measured with the ESCID and BPS scales and the type of patient (medical or surgical) during the three procedures at the three moments.

There were no statistically significant differences between the level of sedation (RASS > -4 , -4 and -5) and patient type (medical or surgical).

With respect to physiological indicators (Table 4), it was observed that the parameters remained stable with a slight variation during the application of painful procedures, which normalized with respect to measurements taken at rest. These changes were not observed during non-painful procedures.

Discussion

The main finding of this study is that the ESCID scale has good psychometric properties. Considering the results obtained in relation to the internal consistency, interrater and intrarater reliability as well as the discriminant validation of the ESCID scale, it can be concluded that this tool is a valid and reliable

Table 2 Demographic and medical characteristics of the patients included for analysis ($n = 190$).

Age (years), median [25th to 75th percentiles]	61 [50–73]
Sex (F/M) n (%)	55 (29)/135 (71)
Type of admission to the ICU (medical/surgical) n (%)	120 (63)/70 (37)
Chronic pain syndrome, n (%)	13 (7)
Time of chronic pain (months), median [25th to 75th percentiles]	12 [9–24]
Time of analgesics (months), median [25th to 75th percentiles]	12 [12–24]
Reason for admission to the ICU	
Respiratory, n (%)	44 (23)
Cardiac surgery, n (%)	40 (21)
Trauma, n (%)	25 (13)
Gastrointestinal, abdominal surgery, n (%)	25 (13)
Neuro/neurosurgery, n (%)	17 (9)
Infection/sepsis, n (%)	17 (9)
Cardiac, n (%)	13 (7)
Miscellaneous ^a , n (%)	9 (5)
Time between admission to ICU and enrolment (days), median [25th to 75th percentiles]	3 [1–7]
SAPS II score within 24 h after admission to ICU, median [25th to 75th percentiles]	44 [34–57]
Mechanical ventilation upon enrolment, n (%)	190 (100)
For procedure ($n = 570$)	
Sedation (continuous intravenous infusion), n (%)	485 (85)
Sedation (intravenous boluses), n (%)	27 (5)
Analgesia (continuous intravenous infusion), n (%)	450 (79)
Analgesia (intravenous boluses), n (%)	51 (9)
RASS level, median [25th to 75th percentiles]	−4 [−5; −2]
RASS level >−4, n (%)	256 (45)
RASS level −4, n (%)	160 (28)
RASS level −5, n (%)	154 (27)

^a Miscellaneous: metabolic pathology, intoxication, other surgeries.

tool for measuring pain in unable to self-report mechanically ventilated critically ill patients. These results are consistent with those reported in the first validation of the ESCID scale performed with a small sample of patients in a single medical ICU²⁴.

The psychometric properties of the ESCID scale are similar to those shown by the BPS^{20,23,28,29} and the CPOT^{21–23} scales, which is why the use of such behavioral scales has been recommended in recent guidelines^{18,19}. The internal consistency of the ESCID scale had a Cronbach- α coefficient of 0.85, similar to other studies such as that of Chanques et al.²³, which reported a Cronbach- α coefficient of 0.80 for the BPS and 0.81 for the CPOT. On the other hand, the ESCID scale demonstrated a high internal consistency in its five domains with Cronbach- α coefficients of 0.70–0.87.

In both painful and painless procedures, ESCID shows a high degree of correlation with the BPS, the tool of reference which has been used in different studies^{1,20,23,28,29}, in addition to demonstrating a high degree of interrater and intrarater conformity in the measurements performed.

The ESCID scale has two additional domains with respect to the BPS and is also innovative with respect to other scales, such as the BPS and the CPOT^{16,17,23}, with the introduction of the “consolability” domain which reflects the patient’s reaction to interaction with the observer through verbal and/or tactile stimuli. The “Consolability” domain has proven useful and reliable in other pain behavioral scales,

such as FLACC in pediatric patients³¹ and PAINAD in patients with advanced dementia³², but has not previously been tested in scales to measure pain in critically ill patients.

The fact that the “consolability” domain had a high Cronbach- α coefficient reinforces the internal consistency of the ESCID scale, especially knowing that 150 different observers participated in the study with high interrater and intrarater concordance.

To avoid bias, as in several previous studies^{28,29}, a single measurement was performed per patient and procedure. In addition, all observations were made by 2 observers who were blinded to each other’s evaluation.

The reliability of the ESCID scale according to the type of ICU admission was high in both cases, although Cronbach- α coefficient was better in patients with medical compared to surgical pathologies.

The internal consistency of the ESCID scale displayed a significant decrease in very profoundly sedated patients (RASS score -5) with a Cronbach- α coefficient of 0.63, due to bias or abolition of behavioral indicators, therefore its use may be limited in these patients. This finding was consistent with the literature where other studies have established the existence of some limitations in the use of the BPS and the CPOT, which make them inapplicable in cases of deep sedation, neuromuscular block, tetraplegia or polyneuropathy. This concurs with the guidelines published by Barr et al.¹⁸, which established that behavioral scales

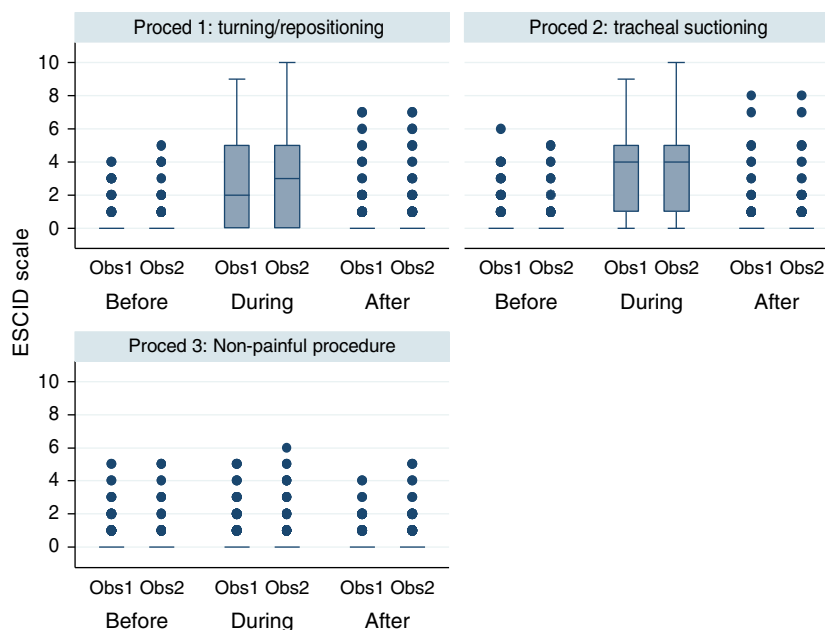


Figure 2 Pain measured with ESCID scale in mechanically ventilated, unable to self-report critically ill patients, by two independent observers before, during and after three different procedures. This figure shows the median scores of the ESCID scale evaluated by two observers according to different situations: before, during and after turning/repositioning, tracheal suctioning and non-painful procedure (rub with a gauze cloth over a portion of healthy skin tissue of the patient). The numbers show a significant increasing of the level of pain during the two painful procedures, that normalized in the assessment after 15 min finishing this procedure. However, there were no modifications in the pain level in the three assessment times during the non-painful procedure. There is a good inter-observer concordance. The points are outliers or values outside these limits. *Note:* Proc: procedure; Obs: observer.

Table 3 Analysis of variance for repeated measures (ANOVA) for BPS and ESCID.

	Turning/repositioning <i>n</i> = 190 Mean (SD)	Tracheal suctioning <i>n</i> = 190 Mean (SD)	Non-painful procedure <i>n</i> = 190 Mean (SD)
BPS scale^a			
<i>Before</i>			
Observer 1	3.1 (0.4)	3.2 (0.5)	3.2 (0.5)
Observer 2	3.2 (0.5)	3.2 (0.5)	3.2 (0.6)
<i>During procedure</i>			
Observer 1	4.7 (1.6)	5.4 (1.8)	3.2 (0.6)
Observer 2	4.8 (1.6)	5.3 (1.8)	3.3 (0.7)
<i>After</i>			
Observer 1	3.2 (0.7)	3.2 (0.5)	3.1 (0.4)
Observer 2	3.3 (0.7)	3.2 (0.5)	3.2 (0.5)
ESCID scale^a			
<i>Before</i>			
Observer 1	0.2 (0.7)	0.3 (0.8)	0.2 (0.7)
Observer 2	0.3 (0.8)	0.3 (0.8)	0.3 (0.9)
<i>During procedure</i>			
Observer 1	2.6 (2.5)	3.4 (2.5)	0.3 (0.9)
Observer 2	2.7 (2.4)	3.3 (2.4)	0.4 (1.0)
<i>After</i>			
Observer 1	0.3 (1.0)	0.3 (0.8)	0.2 (0.6)
Observer 2	0.4 (1.1)	0.3 (0.8)	0.3 (0.8)

^a The response to pain in BPS and ESCID changes over time, increasing during the procedure ($p < 0.001$). There are differences between painful and non-painful procedures ($p < 0.001$). There are not inter-observer differences. There is no significant effect of the interaction neither among time and observer ($p = 0.720$) nor procedure and observer ($p = 0.083$). SD: standard deviation.

Table 4 Description of the changes in physiological indicators before, during and after the procedures.

	Turning/repositioning <i>n</i> = 190 Mean (SD)	Tracheal suctioning <i>n</i> = 190 Mean (SD)	Non-painful procedure <i>n</i> = 190 Mean (SD)
<i>Before</i>			
SAP (mmHg)	125 (21)	126 (20)	120 (21)
DAP (mmHg)	60 (12)	61 (12)	58 (11)
HR (beats per minute)	84 (18)	86 (20)	84 (19)
RR (breaths per minute)	19 (5)	19 (5)	18 (5)
<i>During</i>			
SAP (mmHg)	132 (25)	133 (25)	123 (19)
DAP (mmHg)	65 (15)	65 (14)	58 (11)
HR (beats per minute)	88 (19)	90 (20)	85 (19)
RR (breaths per minute)	21 (7)	23 (8)	18 (5)
<i>After</i>			
SAP (mmHg)	125 (21)	125 (21)	122 (18)
DAP (mmHg)	60 (12)	60 (11)	58 (11)
HR (beats per minute)	85 (18)	86 (19)	84 (19)
RR (breaths per minute)	18 (5)	19 (5)	19 (7)

SAP: systolic arterial pressure; DAP: diastolic arterial pressure; HR: heart rate; RR: respiratory rate; SD: standard deviation.

should be used in patients whose motor functions are intact and in whom behavioral indicators are observable.

The ESCID scale is the only scale which has been subjected to a psychometric validation process in the Spanish language. This is relevant because it increases the possibility of integrating it into PAD management protocols when implementing these in Spanish-speaking countries. The use of a tool which is validated and adapted to the language is crucial¹⁸ because this can produce improvements in the outcomes of critical care patients^{1,3,12-15}.

The nurses responsible for data collection were previously trained in the use of the ESCID and BPS scales. While some reliability studies have shown lower interrater conformity values in the use of the BPS, in which the subjective interpretation of the included items has been established as its main limitation^{17,33}, prior knowledge of behavioral scale use could promote correct application²³, as demonstrated in the good interrater conformity obtained using the ESCID and BPS scales in the present study. The ESCID scale also features a user guide that furthers the knowledge and application of this scale aiming to minimize observer bias²⁷.

As in previous studies, the presence of procedural pain is evident. Major studies, such as the Thunder Project II²⁶ and the Europain⁵, demonstrated the presence of pain during turning/repositioning and tracheal suctioning procedures. In this study, the patients presented increased pain scores when the procedures were carried out: 1.6 (BPS) and 2.4 (ESCID) during turning/repositioning, and 2.2 (BPS) and 3.1 (ESCID) during tracheal suctioning.

This result could justify the conclusion that the analgesia used prior to performing such procedures was insufficient. In fact, in our study, only 9% of patients received a bolus of analgesia prior to painful procedures. It is important to establish pre-emptive analgesia³⁴⁻³⁶ for improved pain control and, consequently, decrease adverse events related

to pain and increase the adequate administration of analgesics and sedatives³⁷.

An effort is required to implement validated tools for the detection of pain, which are currently underused³⁸⁻⁴⁰, to avoid pain going undetected and untreated as has been demonstrated in some studies^{3,41,42}.

In our sample, no significant differences were observed between the level of pain and the type of admission (medical or surgical). Similarly, no significant differences were found between the level of sedation and the type of admission. This confirms the findings of studies into procedural pain in both medical and surgical patients, regardless of the reason for admittance^{2,3,5,26}.

This study has several limitations, such as the exclusion of patients with suspicion or diagnosis of delirium. Moreover, the diagnosis of delirium is not possible in deeply sedated patients (RASS score -4 or -5), in whom the CAM-ICU tool is not applicable, so it is impossible to determine whether these patients had delirium during the measurements of pain. Although the presence of delirium was considered an exclusion criteria, delirium screening was not routinely done in all of the patients so the possibility exists that delirious patients might have been included. Consequently, subsequent studies should be performed to determine the influence of delirium on the ESCID scale domains.

The ESCID scale has been validated in the Spanish language in non-communicative medical and surgical patients. Using the ESCID scale in other ICU patient populations and translating the same into foreign languages will require further validation testing.

Conclusions

The ESCID scale offers good psychometric characteristics for pain assessment in non-communicative, mechanically

ventilated critical care patients. As shown in our study, which included a large sample of patients with different types of admission, the ESCID scale is a valid, reliable and reproducible tool, and its integration into PAD management protocols could help to prevent significant adverse events resulting from poor pain management.

Pain monitoring should be performed routinely, especially in potentially painful procedures that are performed on critical care patients in routine clinical practice.

Funding disclosures

This study was financed by the Spanish Health Research Fund (PI11/00766, Health Ministry. Spanish National Research, Development and Innovation Plan 2008–2001. Spanish title: ‘‘Estudio multicéntrico de validez y fiabilidad de la Escala de Conductas Indicadoras de Dolor ESCID para medir el dolor en pacientes críticos, no comunicativos y sometidos a ventilación mecánica’’) after a peer-reviewed funding process. Also co-financed by FEDER Fund and Economy and Competitiveness Ministry.

Author’s contributions

I.L., M.S., M.A., L.H., study concept and design. I.L., M.S., data analysis and interpretation. I.L., M.S., M.A., L.H., manuscript preparation and drafting. I.L., M.S., statistical methods, statistical data analysis. C.L., M.M.S., M.W., J.d.P., G.R., R.d.B., M.J.F., C.G., J.d.F., C.C., acquisition of the data and manuscript critique and review. All authors approved the manuscript submitted.

Conflicts of interest

The authors declare that they have no conflict of interest.

Acknowledgements

The authors want to express a special recognition to the nurses who have participated in the data collection of this study. The authors want also to thank to patients and relatives who participated in the study, without whom the study could not be possible.

The authors would like to express the collaboration of Isabel Millán and Ana Royuela, Biostatisticians of the Instituto de Investigación Puerta de Hierro Majadahonda (Madrid).

In addition to the authors of this paper, the ESCID research group includes the following investigators: Arias S, Cuenca M, Molano M, Zaragoza I, De la Vera E, Lospitao S, Sabell S, Samper M, Bajo R, Merchán R, Roqueiro MJ, Prieto MJ, Bonilla G and Castillo AM.

Appendix A. Supplementary data

Supplementary data associated with this article can be found, in the online version, at <http://dx.doi.org/10.1016/j.medin.2016.06.004>.

References

- Chanques G, Jaber S, Barbotte E, Violet S, Sebbane M, Perrigault P, et al. Impact of systematic evaluation of pain and agitation in an intensive care unit. *Crit Care Med*. 2006;34:1691–9.
- Chanques G, Sebbane M, Barbotte E, Viel E, Eledjam JJ, Jaber S. A prospective study of pain at rest: incidence and characteristics of an unrecognized symptom in surgical and trauma versus medical intensive care unit patients. *Anesthesiology*. 2007;107:858–60.
- Payen JF, Chanques G, Mantz J, Hercule C, Auriant I, Leguillou JL, et al. Current practices in sedation and analgesia for mechanically ventilated critically ill patients: a prospective multicenter patient-based study. *Anesthesiology*. 2007;106:687–95.
- Puntillo KA, White C, Morris AB, Perdue ST, Stanik-Hutt J, Thompson CL, et al. Patients’ perceptions and responses to procedural pain: results from Thunder Project II. *Am J Crit Care*. 2001;10:238–51.
- Puntillo KA, Max A, Timsit JF, Vignoud L, Chanques G, Robleda G, et al. Determinants of procedural pain intensity in the intensive care unit. The Europain® study. *Am J Respir Crit Care Med*. 2014;189:39–47.
- Lewis KS, Whipple JK, Michael KA, Quebbeman EJ. Effect of analgesic treatment on the physiological consequences of acute pain. *Am J Hosp Pharm*. 1994;51:1539–54.
- Page GG, Blakely WP, Ben-Eliyahu S. Evidence that postoperative pain is a mediator of the tumor-promoting effects of surgery in rats. *Pain*. 2001;90:191–9.
- Jaber S, Chanques G, Altairac C, Sebbane M, Vergne C, Perrigault P, et al. A prospective study of agitation in a medical-surgical ICU: incidence, risk factors, and outcomes. *Chest*. 2005;128:2749–57.
- Choi J, Hoffman LA, Schulz R, Tate JA, Donahoe MP, Ren D, et al. Self-reported physical symptoms in intensive care unit (ICU) survivors: pilot exploration over four months post-ICU discharge. *J Pain Symptom Manage*. 2014;47:257–70.
- Reade MC, Finfer S. Sedation and delirium in the intensive care unit. *N Engl J Med*. 2014;370:444–54.
- Myhren H, Ekeberg O, Tøien K, Karlsson S, Stokland O. Posttraumatic stress, anxiety and depression symptoms in patients during the first year post intensive care unit discharge. *Crit Care*. 2010;14:R14.
- Robinson BR, Mueller EW, Henson K, Branson RD, Barsoum S, Tsuei BJ. An analgesia-delirium-sedation protocol for critically ill trauma patients reduces ventilator days and hospital length of stay. *J Trauma*. 2008;65:517–26.
- Skrobik Y, Ahern S, Leblanc M, Marquis F, Awissi DK, Kavanagh BP. Protocolized intensive care unit management of analgesia, sedation, and delirium improves analgesia and subsyndromal delirium rates. *Anesth Analg*. 2010;111:451–63.
- Dale CR, Bryson CL, Fan VS, Maynard C, Yanez ND 3rd, Treggiari MM. A greater analgesia, sedation, delirium order set quality score is associated with a decreased duration of mechanical ventilation in cardiovascular surgery patients. *Crit Care Med*. 2013;41:2610–7.
- Mansouri P, Javadpour S, Zand F, Ghodsbini F, Sabetian G, Masjedi M, et al. Implementation of a protocol for integrated management of pain, agitation, and delirium can improve clinical outcomes in the intensive care unit: a randomized clinical trial. *J Crit Care*. 2013;28:918–22.
- Pudas-Tähkä SM, Axelin A, Aantaa R, Lund V, Salanterä S. Pain assessment tools for unconscious or sedated intensive care patients: a systematic review. *J Adv Nurs*. 2009;65:946–56.
- Gélinas C, Puntillo KA, Joffe AM, Barr J. A validated approach to evaluating psychometric properties of pain assessment tools

- for use in nonverbal critically ill adults. *Semin Respir Crit Care Med.* 2013;34:153–68.
18. Barr J, Fraser GL, Puntillo KA, Ely EW, Gélinas C, Dasta JF, et al. Clinical practice guidelines for the management of pain, agitation, and delirium in adult ICU patients. *Crit Care Med.* 2013;41:263–306.
 19. Celis-Rodríguez E, Birchenall C, de la Cal MÁ, Castorena Arellano G, Hernández A, Ceraso D, et al. Clinical practice guidelines for evidence-based management of sedoanalgesia in critically ill adult patients. *Med Intensiva.* 2013;37:519–74.
 20. Payen JF, Bru O, Bosson JL, Lagrasta A, Novel E, Deschaux I, et al. Assessing pain in critically ill sedated patients by using a behavioral pain scale. *Crit Care Med.* 2001;29:2258–63.
 21. Gélinas C, Fillion L, Puntillo KA, Viens C, Fortier M. Validation of the critical-care pain observation tool in adult patients. *Am J Crit Care.* 2006;15:420–7.
 22. Gélinas C, Johnston C. Pain assessment in the critically ill ventilated adult: validation of the critical-care pain observation tool and physiologic indicators. *Clin J Pain.* 2007;23:497–505.
 23. Chanques G, Pohlman A, Kress JP, Molinari N, de Jong A, Jaber S, et al. Psychometric comparison of three behavioral scales for the assessment of pain in critically ill patients unable to self-report. *Crit Care.* 2014;18:R160.
 24. Latorre Marco I, Solís Muñoz M, Falero Ruiz T, Larrasquitu Sánchez A, Romay Pérez AB, Millán Santos, et al. Validation of the scale of behavior indicators of pain (ESCID) in critically ill, non-communicative patients under mechanical ventilation: results of the ESCID scale. *Enferm Intensiva.* 2011;22:3–12.
 25. Pardo C, Muñoz T, Chamorro C. Analgesia and Sedation Work Group of SEMICYUC. Monitoring pain: recommendations of the Analgesia and Sedation Work Group of SEMICYUC. *Med Intensiva.* 2006;30:379–85.
 26. Puntillo KA, Morris AB, Thompson CL, Stanik-Hutt J, White CA, Wild LR. Pain behaviors observed during six common procedures: results from Thunder Project II. *Crit Care Med.* 2004;32:421–7.
 27. Latorre-Marco I, Solís-Muñoz M, Acevedo-Nuevo M, Hernández-Sánchez ML, López-López C, Sánchez-Sánchez MM, et al. Validation of the Behavioural Indicators of Pain Scale ESCID for pain assessment in non-communicative and mechanically ventilated critically ill patients: a research protocol. *J Adv Nurs.* 2016;72:205–16.
 28. Young J, Siffleet J, Nikoletti S, Shaw T. Use of a behavioural pain scale to assess pain in ventilated, unconscious and/or sedated patients. *Intensive Crit Care Nurs.* 2006;22:32–9.
 29. Ahlers SJ, Van der Veen AM, Van Dijk M, Tibboel D, Knibbe CA. The use of the Behavioral Pain Scale to assess pain in conscious sedated patients. *Anesth Analg.* 2010;110:127–33.
 30. Streiner DL, Kottner J. Recommendations for reporting the results of studies of instrument and scale development and testing. *J Adv Nurs.* 2014;70:1970–9.
 31. Dorfman TL, Sumamo Schellenberg E, Rempel GR, Scott SD, Hartling L. An evaluation of instruments for scoring physiological and behavioral cues of pain, non-pain related distress, and adequacy of analgesia and sedation in pediatric mechanically ventilated patients: a systematic review. *Int J Nurs Stud.* 2014;51:654–76.
 32. Mosele M, Inelmen EM, Toffanello ED, Girardi A, Coin A, Manzato E. Psychometric properties of the pain assessment in advanced dementia scale compared to self assessment of pain in elderly patients. *Dement Geriatr Cogn Disord.* 2012;34:38–43.
 33. Li D, Puntillo K, Miaskowski C. A review of objective pain measures for use with critical care adult patients unable to self-report. *J Pain.* 2008;9:2–10.
 34. De Jong A, Molinari N, de Lattre S, Gniadek C, Carr J, Conseil M, et al. Decreasing severe pain and serious adverse events while moving intensive care unit patients: a prospective interventional study (the NURSE-DO project). *Crit Care.* 2013;17:R74.
 35. Robleda G, Roche-Campo F, Sendra MÁ, Navarro M, Castillo A, Rodríguez-Arias A, et al. Fentanyl as pre-emptive treatment of pain associated with turning mechanically ventilated patients: a randomized controlled feasibility study. *Intensive Care Med.* 2016;42:183–91.
 36. Robleda G, Roche-Campo F, Membrilla-Martínez L, Fernández-Lucio A, Villamor-Vázquez M, Merten A, et al. Evaluation of pain during mobilization and endotracheal aspiration in critical patients. *Med Intensiva.* 2016;40:96–104.
 37. Gélinas C, Arbour C, Michaud C, Vaillant F, Desjardins S. Implementation of the critical-care pain observation tool on pain assessment/management nursing practices in an intensive care unit with nonverbal critically ill adults: a before and after study. *Int J Nurs Stud.* 2011;48:1495–504.
 38. Luetz A, Balzer F, Radtke FM, Jones C, Citerio G, Walder B, et al. Delirium, sedation and analgesia in the intensive care unit: a multinational, two-part survey among intensivists. *PLOS ONE.* 2014;9:e110935.
 39. Burry LD, Williamson DR, Perreault MM, Rose L, Cook DJ, Ferguson ND, et al. Analgesic, sedative, antipsychotic, and neuromuscular blocker use in Canadian intensive care units: a prospective, multicentre, observational study. *Can J Anaesth.* 2014;61:619–30.
 40. The SRLF Trial Group. Sedation in French intensive care units: a survey of clinical practice. *Ann Intensive Care.* 2013;3:24.
 41. Martin J, Franck M, Sigel S, Weiss M, Spies C. Changes in sedation management in German intensive care units between 2002 and 2006: a national follow-up survey. *Crit Care.* 2007;11:R124.
 42. Reschreiter H, Maiden M, Kapila A. Sedation practice in the intensive care unit: a UK national survey. *Crit Care.* 2008;12:R152.