



ORIGINAL

Prediction of massive bleeding. Shock index and modified shock index[☆]



L.J. Terceros-Almanza^{*}, C. García-Fuentes, S. Bermejo-Aznárez, I.J. Prieto-del Portillo, C. Mudarra-Reche, I. Sáez-de la Fuente, M. Chico-Fernández

Unidad de Trauma y Emergencias, Servicio de Medicina Intensiva, Hospital Universitario 12 de Octubre, Madrid, Spain

Received 22 May 2016; accepted 2 October 2016
Available online 6 November 2017

KEYWORDS

Massive bleeding;
Massive transfusion;
Shock index;
Modified shock index;
Injury severity score;
Revised trauma score

Abstract

Objective: To determine the predictive value of the shock index and modified shock index in patients with massive bleeding due to severe trauma.

Design: Retrospective cohort.

Setting: Severe trauma patient's initial attention at the intensive care unit of a tertiary hospital.

Subjects: Patients older than 14 years that were admitted to the hospital with severe trauma (injury severity score >15) from January 2014 to December 2015.

Variables: We studied the sensitivity (Se), specificity (Sp), positive and negative predictive value (PV+ and PV–), positive and negative likelihood ratio (LR+ and LR–), ROC curves (receiver operating characteristics) and the area under the same (AUROC) for prediction of massive hemorrhage.

Results: 287 patients were included, 76.31% (219) were male, mean age was 43.36 (\pm 17.71) years and ISS was 26 (interquartile range [IQR]: 21–34). The overall frequency of massive bleeding was 8.71% (25). For shock index: AUROC was 0.89 (95% confidence intervals [CI] 0.84–0.94), with an optimal cutoff at 1.11, Se was 91.3% (95% CI: 73.2–97.58) and Sp was 79.69% (95% CI: 74.34–84.16). For the modified shock index: AUROC was 0.90 (95% CI: 0.86–0.95), with an optimal cutoff at 1.46, Se was 95.65% (95% CI: 79.01–99.23) and Sp was 75.78% (95% CI: 70.18–80.62).

Conclusion: Shock index and modified shock index are good predictors of massive bleeding and could be easily incorporated to the initial workup of patients with severe trauma.

© 2017 Elsevier España, S.L.U. and SEMICYUC. All rights reserved.

[☆] Please cite this article as: Terceros-Almanza LJ, García-Fuentes C, Bermejo-Aznárez S, Prieto-del Portillo IJ, Mudarra-Reche C, Sáez-de la Fuente I, et al. Predicción de hemorragia masiva. Índice de shock e índice de shock modificado. Med Intensiva. 2017;41:532–538.

^{*} Corresponding author.

E-mail address: luchoter000@hotmail.com (L.J. Terceros-Almanza).

PALABRAS CLAVE

Hemorragia masiva;
 Transfusión masiva;
 Índice de shock;
 Índice de shock
 modificado;
 Escala de severidad
 del trauma;
 Escala de trauma
 revisado

Predicción de hemorragia masiva. Índice de shock e índice de shock modificado**Resumen**

Objetivo: Determinar la capacidad de predicción del índice de shock y del índice de shock modificado para hemorragia masiva tras sufrir un trauma grave.

Diseño: Cohorte retrospectiva.

Ámbito: Atención inicial hospitalaria al paciente con enfermedad traumática grave en una unidad de cuidados intensivos de trauma de un hospital terciario.

Sujetos: Pacientes mayores de 14 años con trauma grave (*injury severity score* [ISS] > 15), admitidos de forma consecutiva desde enero de 2014 hasta diciembre de 2015.

Variables: Se estudiaron sensibilidad (Se), especificidad (Sp), valores predictivos positivo y negativo (VP+ y VP-), razones de verosimilitud positiva y negativa (RV+ y RV-), curvas ROC (*receiver operating characteristics*) y el área bajo las mismas (AUROC) para predicción de hemorragia masiva.

Resultados: Se incluyeron 287 pacientes, el 76,31% (219) fueron varones, con una edad media de 43,36 ($\pm 17,71$) e ISS de 26 (rango intercuartil [RIC]: 21-34). La frecuencia global de hemorragia masiva fue de 8,71% (25). Para el índice de shock se obtuvo: AUROC de 0,89 (intervalo de confianza [IC] 95%: 0,84-0,94), con un punto de corte óptimo en 1,11, Se del 91,3% (IC 95%: 73,2-97,58) y Sp del 79,69% (IC 95%: 74,34-84,16). Para el índice de shock modificado se obtuvo: AUROC de 0,90 (IC 95%: 0,86-0,95), con un punto de corte óptimo en 1,46, Se del 95,65% (IC 95%: 79,01-99,23) y Sp del 75,78% (IC 95%: 70,18-80,62).

Conclusiones: El índice de shock y el índice de shock modificado son buenos predictores de hemorragia masiva y de fácil aplicación durante la atención inicial del trauma grave.

© 2017 Elsevier España, S.L.U. y SEMICYUC. Todos los derechos reservados.

Introduction

Hemorrhagic shock is the leading cause of avoidable mortality following severe trauma. Its early identification remains a challenge both out and in hospital—a fact that results in deficient diagnosis and inappropriate patient transfer.^{1,2}

The early diagnosis of hemorrhagic shock is essential to improve the outcomes after trauma and control bleeding. Early and precise prediction of hemorrhagic shock makes it possible to adequately prepare the initial patient management team, with prompt activation of the massive bleeding protocol (MBP).³⁻⁵

Retrospective studies analyze different predictive indices, assessing their capacity to diagnose massive bleeding (MB). These indices are difficult to implement, however: their determination requires laboratory test results and imaging data that are very time consuming and difficult to perform at out-hospital level.⁶

On the other hand, simple clinical parameters such as heart rate or arterial pressure have been shown to be inexact in predicting MB.⁷⁻⁹

The shock index (SI), defined as heart rate divided by systolic blood pressure, and the modified shock index (MSI), defined as heart rate divided by mean blood pressure, are simple and easy to apply, and have therefore been studied by a number of authors.

Different studies have shown that a high SI after severe trauma is associated to high mortality¹⁰⁻¹² and to the severity of injury.¹³ The SI has also been used as a predictor of days on mechanical ventilation and of hospital stay,¹⁴ as well as of the probability of admission to critical care.¹⁵ Lastly, some authors have related SI to the need for blood transfusion and hemostatic

intervention.¹⁶ Less is known of its capacity to predict MB, however.

The present study was carried out to determine the capacity of SI and MSI to define the optimum cutoff point in patients who have suffered severe trauma.

Design and methods

A retrospective cohort study involving the consecutive inclusion of all patients was carried out in the trauma and emergencies intensive care unit (ICU) of a tertiary hospital. We included patients over 14 years of age with severe trauma (*injury severity score* [ISS] >15) in which initial management took place upon arrival in hospital. The study patients were admitted between January 2014 and December 2015 (excluding individuals with cardiorespiratory arrest in out-hospital care, spinal cord injury, the use of heart rate-regulating drugs, and initial resuscitation performed in another center). Initial trauma care is provided by a specialized team composed of two intensivists (staff physician and resident), two nurses, a clinical assistant and two hospital attendants. The team can also consult different specialists related to trauma care. Management is carried out following the Advanced Trauma Life Support (ATLS) guidelines. The hospital has a MBP that has been approved by the transfusions commission and by hospital management.

The data were collected with masking of the observer: demographic variables (age and gender), physiological parameters (first recorded heart rate, systolic and diastolic blood pressure after arrival in hospital—initial resuscitation area of the ICU); laboratory test parameters (arterial blood gases—pH, base excess [BE], lactic acid) and prognostic

variables (revised trauma score [RTS], ISS). The transfusions registry of our unit was consulted to document the number of packed red cell units transfused in the first 24 h in each patient. Massive bleeding was defined as the administration of 10 or more packed red cell units in the first 24 h of admission after trauma. Mathematical calculation of SI and MSI was subsequently made. As commented above, SI was defined as heart rate divided by systolic blood pressure, and MSI was defined as heart rate divided by mean blood pressure. No determination of MSI was made in patients without diastolic blood pressure. Lastly, we consulted the discharge reports to assess hospital stay and mortality.

Qualitative variables were reported as frequency and proportion, while quantitative variables were reported as the mean (\pm standard deviation) and median (interquartile range [IQR]). The χ^2 test and Fisher exact test were used to estimate the association between two categorical variables, while the Student *t*-test was used for the comparison

of two means (after checking normal distribution of the data with the Kolmogorov–Smirnov test, and homogeneity of variances with the Levene test). The Wilcoxon test was used in the case of a non-normal distribution. Statistical significance was considered for $p \leq 0.05$.

For each index we calculated sensitivity, specificity, positive predictive value (PV+), negative predictive value (PV–), positive likelihood ratio (LR+) and negative likelihood ratio (LR–). The receiver operating characteristic (ROC) curves were obtained, with calculation of the area under the curve (AUROC) and the corresponding 95% confidence interval (95% CI). The SPSS® version 19.0 statistical package for MS Windows was used throughout.

Results

A total of 287 patients were studied (Fig. 1). Of these, 76.31% (n=219) were men. The mean age was 43.36

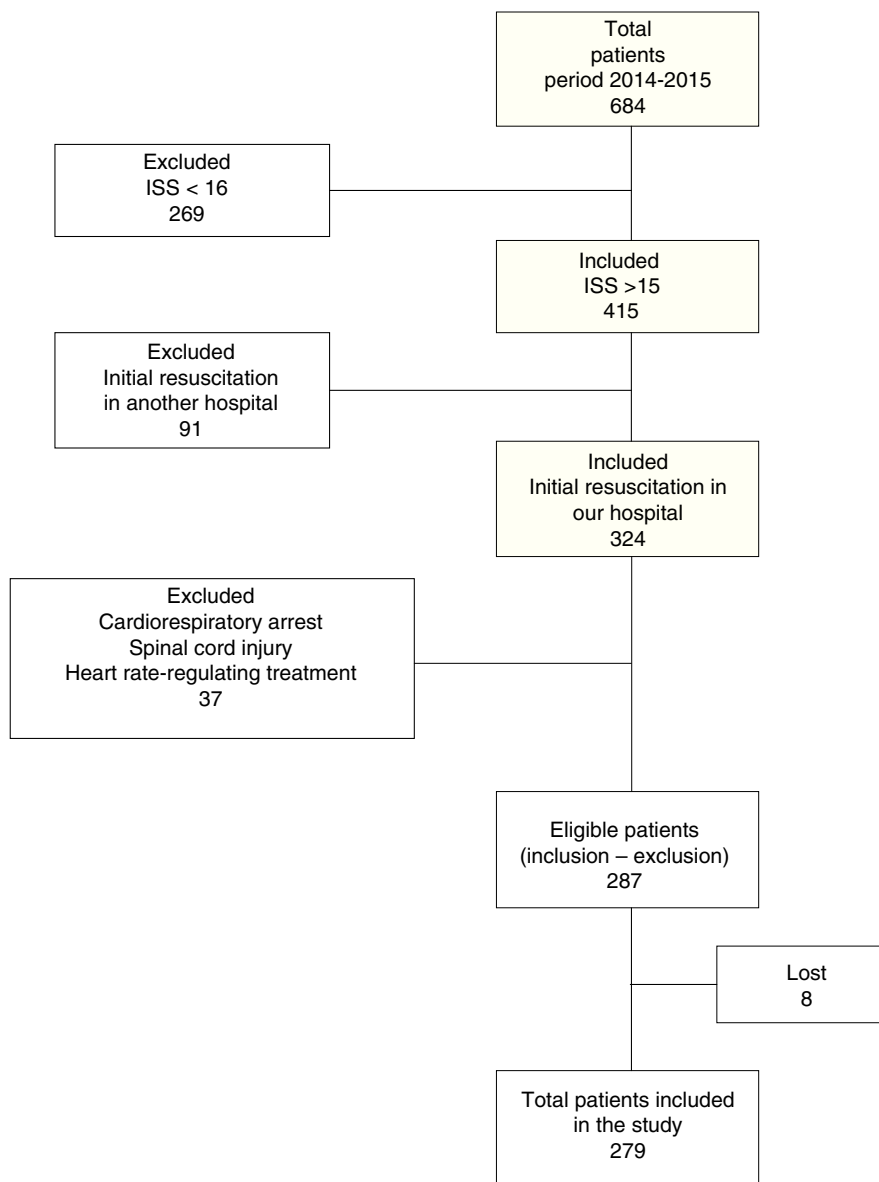
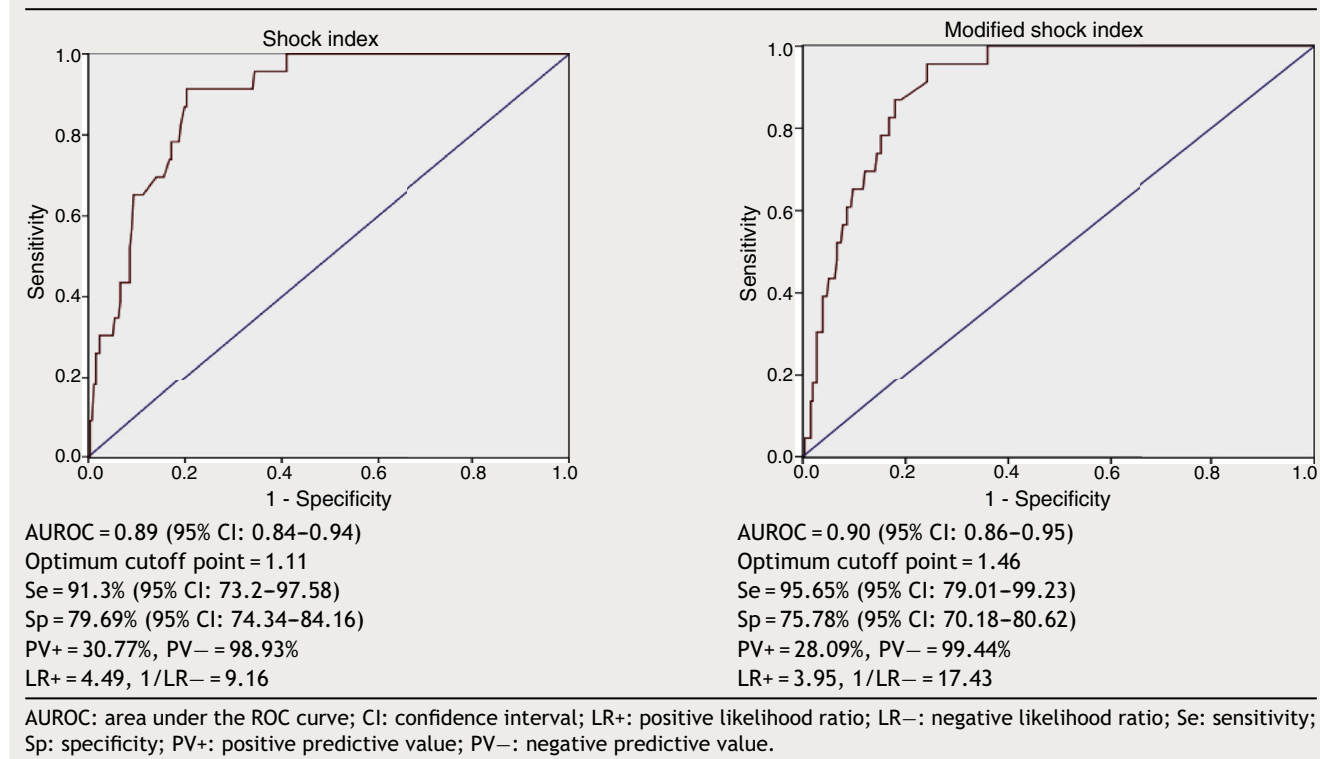


Figure 1 Flow of patients included in the study. Period 2014–1015.

Table 1 Diagnostic determination of the shock index and modified shock index.

(± 17.71) years and the median ISS score was 26 (IQR: 21–34). Closed trauma represented 91.6% of the cases (falls from a height being the most frequent cause). The overall MB rate was 8.71% ($n = 25$); the median duration of stay in the ICU was 3.74 days (IQR: 1.81–11.55); and the mortality rate was 15.33% ($n = 44$).

For SI we obtained: AUROC 0.89 (95% CI: 0.84–0.94), with an optimum cutoff point of 1.11, sensitivity 91.3% (95% CI: 73.2–97.58) and specificity 79.69% (95% CI: 74.34–84.16).

For MSI we obtained: AUROC 0.90 (95% CI: 0.86–0.95), with an optimum cutoff point of 1.46, sensitivity 95.65% (95% CI: 79.01–99.23) and specificity 75.78% (95% CI: 70.18–80.62) (Table 1).

An a posteriori analysis was made with the defined cutoff points, contrasting different variables to obtain significant differences for MB, the severity of injury (ISS), coagulopathy, ICU stay and mortality (Table 2).

Discussion

Hemorrhagic shock is the type of shock most often seen in severe trauma patients, and its early identification is crucial to patient prognosis.

Our study shows both shock indices to offer good MB predicting capacity, and the results obtained are comparable to those of other studies that describe SI and MSI as potentially useful for the identification of hemorrhagic shock both in and out of hospital.

In the out-hospital setting, Mitra et al. used an SI cutoff point ≥ 1 for predicting MB (the latter being defined as at least 5 packed red cell units in 4 h), resulting in a sensitivity

of 47.9% and a specificity of 90.5%.¹⁷ Vandromme et al., in patients assisted on an out-hospital basis, recorded a significant increase in the risk of MB (the latter being defined as at least 10 packed red cell units in 24 h) among patients with SI > 0.9 .¹⁸

In the in-hospital setting, Mutschler et al. found that with SI between 1–1.4 and > 1.4 , a total of 31% and 57% of the patients require at least 10 packed red cell units in the first 24 h, respectively.¹⁹ Hagiwara et al. in turn found that in patients with MB (the latter being defined as at least 4 packed red cell units in 24 h), the mean SI was 1.05 (± 0.58), versus 0.64 (± 0.21) in patients without MB.²⁰

Both SI and MSI can be modified by a number of factors. For example, at out-hospital level, the presence of pain and anxiety can cause tachycardia, and this in turn increases the mentioned indices. Another conditioning factor is the use of manual or automatic systems for recording blood pressure. In this regard, it is known that measuring arterial pressure with automatic systems results in increased pressure values, and this in turn lowers the index scores. The influence of treatment in the out-hospital setting also must be taken into account. Hagiwara et al. found that patients with bleeding and who received at least 1 l of fluid therapy in the out-hospital setting presented higher SI scores (1.1 ± 0.6 versus 1.05 ± 0.58).²⁰ On the other hand, differences are observed according to whether the indices are estimated on a point basis or in the form of repeated measurements. In this regard, Chen et al. concluded that the determination of SI over a period of time is more predictive of MH.²¹

Both SI and MSI have been studied in application to parameters other than the prediction of MB. In effect, high

Table 2 Characteristics of the patients according to the shock index and modified shock index.

	Global	Shock index			Modified shock index		
		<1.11	>1.11	<i>p</i>	<1.46	>1.46	<i>p</i>
Patients, n (%)	279	206	73		194	85	
Age	43.36 (±17.71)	43.51 (±17.95)	42.92 (±17.18)	0.341	43.87 (±17.81)	42.21 (±17.72)	0.119
Gender, n (%)	219 (76.31%)	160 (77.29%)	53 (72.6%)	0.428	150 (77.32%)	63 (74.12%)	0.646
ISS (IQR)	26.5 (21–34)	25 (19.5–29)	38 (29–49)	<0.001	25 (20–29)	34 (25–46.5)	<0.001
RTS (IQR)	6.9 (5.03–7.84)	6.9 (5.97–7.84)	5.44 (4.4–6.38)	<0.001	6.9 (5.55–7.84)	5.97 (4.5–6.9)	<0.001
SBP	111.06 (±26.28)	122.11 (±19.09)	80 (±17.29)	<0.001	122.17 (±20.05)	85.25 (±20.26)	<0.001
DBP	64.79 (±17.08)	70.99 (±13.61)	47.36 (±13.43)	<0.001	72.31 (±13.14)	47.13 (±10.86)	<0.001
MBP	80.21 (±19.32)	88.03 (±14.25)	58.24 (±14.03)	<0.001	88.93 (±14.29)	59.84 (±12.98)	<0.001
HR	95.69 (±22.79)	89.22 (±19.6)	113.89 (±21.35)	<0.001	87.31 (±18.77)	114.03 (19.2)	<0.001
MB, n (%)	25 (8.71%)	2 (1%)	21 (28.8%)	<0.001	1 (0.52%)	22 (25.88%)	<0.001
PRC/ml (IQR)	0 (0–562.5)	0 (0)	1.500 (500–2.500)	<0.001	0 (0)	1.000 (0–2.500)	<0.001
Coagulopathy, n (%)	43 (14.98%)	10 (4.9%)	30 (42.25%)	<0.001	9 (4.71%)	31 (37.35%)	<0.001
pH (IQR)	7.32 (7.27–7.38)	7.33 (7.29–7.39)	7.30 (7.20–7.35)	0.892	7.33 (7.29–7.39)	7.30 (7.20–7.34)	0.455
BE (IQR)	–3.8 (–7.23 to –1.08)	–2.8 (–6.2 to –0.75)	–6.8 (–8.9 to –6.8)	<0.001	–2.9 (–6.5 to –0.7)	–6.2 (–8.6 to –2.45)	<0.001
Lactic acid (IQR)	2 (1.3–3.1)	1.7 (1.2–2.4)	3.2 (2–4.76)	<0.001	1.75 (1.2–2.48)	2.8 (1.7–4.35)	<0.001
ICU stay (IQR)	3.74 (1.81–11.55)	3.35 (1.74–8.94)	10.19 (2.49–18.06)	<0.001	3.34 (1.7–9.39)	8.81 (2.2–16)	<0.001
Mortality, n (%)	44 (15.33%)	23 (11.11%)	17 (23.94%)	0.011	22 (11.34%)	18 (21.69%)	0.039

PRC: packed red cell units; BE: base excess; HR: heart rate; MB: massive bleeding; ISS: injury severity score; DBP: diastolic blood pressure; MBP: mean blood pressure; SBP: systolic blood pressure; IQR: interquartile range; RTS: revised trauma score; ICU: intensive care unit.

index scores have been associated to increased mortality, severity of injury (ISS) and days of stay in the ICU. Cannon et al. found that patients with an SI score of 0.9 and who have suffered severe trauma present higher mortality rates.¹⁰ McNab et al. in turn examined the trends in SI scores during patient transfer to hospital and found an increase of ≥ 0.3 points to be associated to increased mortality (27.6% versus 5.8%) as well as to longer hospital stay.¹⁴ Our study likewise recorded differences in the severity of injury (ISS), coagulopathy, ICU stay and mortality.

The present study has many limitations, including the fact that the variables were compiled on a retrospective basis. Nevertheless, most studies published to date also involve a retrospective design, as demonstrated by Olausson et al. in a review in which only 5 of the 351 studies identified in the literature search met their inclusion criteria for assessing SI as a predictor of critical bleeding.²²

Another fundamental limitation is the lack of a universal definition of MB. The definition of 10 packed red cell units in 24 h introduces bias in that it excludes early deaths as well as patients with active bleeding and posterior bleeding control (arteriography and/or operating room) that did not receive 10 units, and the inclusion of patients not requiring acute transfusion.²³ Our group conducted a subanalysis of the patients that received between 4 and 10 packed red cell units in the first 24 h: 39 patients had a probable active bleeding point (need for 4–10 packed red cell units in 24 h), and of these, 84.7% (n = 33) suffered hemodynamic instability, 53.8% (n = 21) required surgery and/or arteriography for bleeding control, and 7 died from refractory hemorrhagic shock without receiving 10 packed red cell units. Because of this, and in coincidence with Hagiwara et al.²⁰ and Olausson et al.,²² we consider it necessary to revise the diagnostic criteria referred to MB and to seek a definition offering greater sensitivity in identifying the condition (at least 4 packed red cell units in 24 h or at least 5 packed red cell units in 4 h).^{23,24}

Conclusions

Both SI and MSI are good predictors of MB and are easy to apply during initial management of severe trauma. Our cutoff point for SI is 1.11, versus 1.46 for MSI.

Authorship

Luis Juan Terceros-Almanza: literature search, database, data collection, statistical analysis, drafting of the manuscript. Carlos García-Fuentes: literature search, database, data collection, statistical analysis, drafting of the manuscript. Susana Bermejo-Aznárez: drafting of the manuscript. Isidro Javier Prieto-del Portillo: data collection. Carolina Mudarra-Reche: data collection. Ignacio Sáez-de la Fuente: data collection. Mario Chico-Fernández: drafting of the manuscript.

Conflicts of interest

The authors declare that they have no conflicts of interest.

Acknowledgements

Thanks are due to the Trauma and Emergencies Unit of the Department of Intensive Care Medicine of Hospital Universitario 12 of Octubre (Madrid, Spain).

References

1. Haas B, Gomez D, Zagorski B, Stukel TA, Rubinfeld GD, Nathens AB. Survival of the fittest: the hidden cost of undertriage of major trauma. *J Am Coll Surg.* 2010;211:804–11.
2. Sampalis JS, Denis R, Frechette P, Brown R, Fleischer D, Mulder D. Direct transport to tertiary trauma centers versus transfer from lower level facilities: impact on mortality and morbidity among patients with major trauma. *J Trauma.* 1997;43:288–96.
3. Birkhahn RH, Gaeta TJ, Terry D, Bove JJ, Tloczkowski J. Shock index in diagnosing early acute hypovolemia. *Am J Emerg Med.* 2005;23:323–6.
4. Larson CR, White CE, Spinella PC, Jones JA, Holcomb JB, Blackburne LH, et al. Association of shock, coagulopathy, and initial vital signs with massive transfusion in combat casualties. *J Trauma.* 2010;69 Suppl. 1:S26–32.
5. Evans JA, van Wessem KJ, McDougall D, Lee KA, Lyons T, Balogh ZJ. Epidemiology of traumatic deaths: comprehensive population-based assessment. *World J Surg.* 2010;34:158–63.
6. Chico-Fernández M, García-Fuentes C, Alonso-Fernández MA, Toral-Vázquez D, Bermejo-Aznárez S, Alted-López E. Massive transfusion predictive scores in trauma. Experience of a transfusion registry. *Med Intensiva.* 2011;35:546–51.
7. Victorino GP, Battistella FD, Wisner DH. Does tachycardia correlate with hypotension after trauma? *J Am Coll Surg.* 2003;196:679–84.
8. Brasel KJ, Guse C, Gentilello LM, Nirula R. Heart rate: is it truly a vital sign? *J Trauma.* 2007;62:812–7.
9. Gutierrez G, Reines HD, Wulf-Gutierrez ME. Clinical review: hemorrhagic shock. *Crit Care.* 2004;8:373–81.
10. Cannon CM, Braxton CC, Kling-Smith M, Mahnken JD, Carlton E, Moncure M. Utility of the shock index in predicting mortality in traumatically injured patients. *J Trauma.* 2009;67:1426–30.
11. Liu YC, Liu JH, Fang ZA, Shan GL, Xu J, Qi ZW, et al. Modified shock index and mortality rate of emergency patients. *World J Emerg Med.* 2012;3:114–7.
12. Singh A, Ali S, Agarwal A, Srivastava RN. Correlation of shock index and modified shock index with the outcome of adult trauma patients: a prospective study of 9860 patients. *N Am J Med Sci.* 2014;6:450–2.
13. Paladino L, Subramanian RA, Nabors S, Sinert R. The utility of shock index in differentiating major from minor injury. *Eur J Emerg Med.* 2011;18:94–8.
14. McNab A, Burns B, Bhullar I, Chesire D, Kerwin A. A prehospital shock index for trauma correlates with measures of hospital resource use and mortality. *Surgery.* 2012;152:473–6.
15. Keller AS, Kirkland LL, Rajasekaran SY, Cha S, Rady MY, Huddleston JM. Unplanned transfers to the intensive care unit: the role of the shock index. *J Hosp Med.* 2010;5:460–5.
16. Demuro JP, Simmons S, Jax J, Gianelli SM. Application of the shock index to the prediction of need for hemostasis intervention. *Am J Emerg Med.* 2013;31:1260–3.
17. Mitra B, Fitzgerald M, Chan J. The utility of a shock index ≥ 1 as an indication for pre-hospital oxygen carrier administration in major trauma. *Injury.* 2014;45:61–5.
18. Vandromme MJ, Griffin RL, Kerby JD, McGwin G Jr, Rue LW 3rd, Weinberg JA. Identifying risk for massive transfusion in the relatively normotensive patient: utility of the prehospital shock index. *J Trauma.* 2011;70:384–90.

19. Mutschler M, Nienaber U, Münzberg M, Wöfl C, Schoechl H, Paffrath T, et al. The shock index revisited — a fast guide to transfusion requirement? A retrospective analysis on 21,853 patients derived from the Trauma Register DGU. *Crit Care*. 2013;17:R172.
20. Hagiwara A, Kimura A, Kato H, Mizushima Y, Matsuoka T, Takeda M, et al. Hemodynamic reactions in patients with hemorrhagic shock from blunt trauma after initial fluid therapy. *J Trauma*. 2010;69:1161–8.
21. Chen L, Reisner AT, Gribok A, Reifman J. Exploration of prehospital vital sign trends for the prediction of trauma outcomes. *Prehosp Emerg Care*. 2009;13:286–94.
22. Olausson A, Blackburn T, Mitra B, Fitzgerald M. Shock index for prediction of bleeding post trauma: a systematic review. *Emerg Med Australas*. 2014;26:223–8.
23. Mitra B, Cameron PA, Gruen RL, Mori A, Fitzgerald M, Street A. The definition of massive transfusion in trauma: a critical variable in examining evidence for resuscitation. *Eur J Emerg Med*. 2011;18:137–42.
24. Zatta AJ, McQuilten ZK, Mitra B, Roxby DJ, Sinha R, Whitehead S, et al., Massive Transfusion Registry Steering Committee. Elucidating the clinical characteristics of patients captured using different definitions of massive transfusion. *Vox Sang*. 2014;107:60–70.