



## ORIGINAL

# Incidence and evolution of sepsis-induced cardiomyopathy in a cohort of patients with sepsis and septic shock<sup>☆</sup>



I. Narváez<sup>a,\*</sup>, A. Canabal<sup>b</sup>, C. Martín<sup>a</sup>, M. Sánchez<sup>b</sup>,  
A. Moron<sup>c</sup>, J. Alcalá<sup>a</sup>, S. Giacomani<sup>a</sup>, M. Magro<sup>b</sup>

<sup>a</sup> Servicio de Cardiología, Hospital Virgen de la Salud, Toledo, Spain

<sup>b</sup> Servicio de Medicina Intensiva, Hospital Virgen de la Salud, Toledo, Spain

<sup>c</sup> Universidad de Castilla La Mancha, Ciudad Real, Spain

Received 1 June 2017; accepted 26 August 2017

### KEYWORDS

Septic  
cardiomyopathy;  
Sepsis;  
Septic shock;  
Left ventricular  
ejection fraction

### Abstract

**Objective:** The aim of this study was to establish the incidence of septic cardiomyopathy (SM) in patients with sepsis and septic shock, to describe its characteristics and testing its evolution.

**Design:** Prospective cohort study.

**Participants:** We included 57 consecutive patients admitted to Intensive Care Unit, who met criteria of sepsis and septic shock.

**Principal variables of interest:** Clinical and biochemical variables were analyzed. An echocardiogram was performed in the first 24h of admission, determining myocardial function parameters, and if the patients had left ventricular ejection fraction (LVEF) <50% a second echocardiogram was performed.

**Ambit:** Intensive medical and surgical Care Service for Adults in University Hospital.

**Results:** The mean age of the patients was 62.1 ± 16.3 years. 58% were males. 22.8% had left ventricular dysfunction. The mean LVEF in patients with SM was lower than those without SM (34.1 ± 10.6 vs 60.7 ± 6.94%,  $P < .001$ ), with complete recovery, in survivors, after the acute event (LVEF at discharge 56.1 ± 6.3%,  $P = .04$ ). Patients with SM had higher levels of procalcitonin (47.1 ± 35.4 vs 18.9 ± 24.5;  $P = .02$ ) and higher score on the Sequential Organ Failure Assessment (SOFA score) (9.91 ± 3.82 vs 7.47 ± 3.41;  $P = .037$ ). Mortality was not significantly different between both groups [4 (30.8%) vs 4 (9.1%);  $P = .07$ ].

<sup>☆</sup> Please cite this article as: Narváez I, Canabal A, Martín C, Sánchez M, Moron A, Alcalá J, et al. Incidencia y evolución de la miocardiopatía séptica en una cohorte de pacientes con sepsis y shock séptico. Med Intensiva. 2018;42:283–291.

\* Corresponding author.

E-mail address: [pycky12@hotmail.com](mailto:pycky12@hotmail.com) (I. Narváez).

**PALABRAS CLAVE**

Miocardiopatía séptica;  
Sepsis;  
Shock séptico;  
Fracción de eyección del ventrículo izquierdo

**Conclusions:** SM is not uncommon and is related to a higher scores on the severity scales. In the survivors, LVEF normalized after the recovery of the acute event.

© 2017 Elsevier España, S.L.U. and SEMICYUC. All rights reserved.

## Incidencia y evolución de la miocardiopatía séptica en una cohorte de pacientes con sepsis y shock séptico

**Resumen**

**Objetivo:** El objetivo de este estudio fue determinar la incidencia de miocardiopatía séptica (MS) en pacientes con sepsis y shock séptico, describir sus características y comprobar su evolución.

**Diseño:** Estudio prospectivo sobre una cohorte.

**Participantes:** Se incluyeron 57 pacientes consecutivos ingresados en Unidad de Cuidados Intensivos, con criterios de sepsis y shock séptico.

**Variables de interés principales:** Se analizaron variables clínicas y bioquímicas. Se realizó un ecocardiograma en las primeras 24 h de ingreso, determinando parámetros de función cardíaca, y si los pacientes presentaban una fracción de eyección de ventrículo izquierdo (FEVI) < 50%, se realizó un ecocardiograma evolutivo.

**Ámbito:** Servicio de Medicina Intensiva médico-quirúrgico de adultos en Hospital Universitario. **Resultados:** La edad media de los pacientes fue de  $62,1 \pm 16,3$  años, el 58% fueron varones. El 22,8% presentaron disfunción de ventrículo izquierdo. La FEVI media en los pacientes con MS fue inferior respecto a los que no la tenían ( $34,1 \pm 10,6$  vs.  $60,7 \pm 6,94\%$ ;  $p < 0,001$ ), con recuperación completa de la misma, en los supervivientes, tras el evento agudo (FEVI al alta  $56,1 \pm 6,3\%$ ;  $p = 0,04$ ). Los pacientes con MS, presentaban mayores niveles de procalcitonina ( $47,1 \pm 35,4$  vs.  $18,9 \pm 24,5$ ;  $p = 0,02$ ) y puntuación en la escala Sequential Organ Failure Assessment (SOFA) ( $9,91 \pm 3,82$  vs.  $7,47 \pm 3,41$ ;  $p = 0,037$ ). La mortalidad no fue significativamente diferente entre ambos grupos (4 [30,8%] vs. 4 [9,1%];  $p = 0,07$ ).

**Conclusiones:** La MS no es infrecuente, se relaciona con mayor puntuación en las escalas de gravedad. En los supervivientes, la FEVI se normalizó tras la recuperación del evento agudo.

© 2017 Elsevier España, S.L.U. y SEMICYUC. Todos los derechos reservados.

**Introduction**

Sepsis is defined as potentially fatal organ dysfunction caused by an inadequate host response to infection. Organ dysfunction in turn corresponds to an acute change of two points on the Sequential Organ Failure Assessment (SOFA) scale, as a consequence of infection.<sup>1</sup> Myocardial involvement in this scenario, known as septic cardiomyopathy (SM) in its most common presentation, is characterized by left ventricular systolic myocardial dysfunction. It was first described by Parker in 1984 as a decrease in ventricular ejection fraction with an increase in end-diastolic volume in septic shock patients.<sup>2</sup>

The underlying physiopathological mechanisms comprise a series of systemic factors generated by an inflammatory state mediated by interleukins, tumor necrosis factor, myocyte contraction failure and mitochondrial dysfunction, among others.<sup>3,4</sup> Septic cardiomyopathy is a transient condition that resolves within 7–10 days after onset,<sup>5</sup> though in some cases the disorder can persist for a longer period of time. Improved knowledge of this disease is of interest, in view of its potential implications for the prognosis and treatment of septic patients.

Different studies on SM can be found in the literature, with different conclusions, different inclusion criteria, and no clear agreement regarding the incidence of the disease or its differential characteristics. Transthoracic echocardiography is typically used for the diagnosis of SM.<sup>6</sup> The present study seeks to determine the incidence of SM in a sample of septic patients in our setting, using transthoracic ultrasound, and to describe the characteristics and evolution of the affected patients.

**Patients and methods**

A prospective cohort study was carried out, with the consecutive inclusion of all patients meeting criteria of sepsis and septic shock admitted during the period between May 2014 and October 2015 to a polyvalent, 26-bed adult Intensive Care Unit (ICU) serving a population of 475,958 inhabitants. The patients presented predominantly medical and neurological disease, and surgical cases comprised neurosurgical and maxillofacial surgery patients, as well as polytrauma cases. An annual average of 110 patients with sepsis and septic shock are admitted to the Unit. We

excluded all patients with a history of heart disease (based on clinical diagnosis or detection from the echocardiographic history), including hypertensive heart disease, valve disorders, prior ischemia and/or acute coronary syndrome, as well as the absence of sinus rhythm (fibrillation, atrial flutter or tachyarrhythmia, any type of atrioventricular block, or the presence of some cardiac electrostimulation device), structural cardiomyopathy (dilated, hypertrophic), combinations of the above, and the lack of protocolized echocardiographic exploration in the first 24 h following admission.

Data were compiled related to the patient history (arterial hypertension, diabetes mellitus, dyslipidemia, smoking, alcoholism, obesity [body mass index  $\geq 30$  kg/m<sup>2</sup>], peripheral vascular disease, ischemic or hemorrhagic stroke, chronic renal failure [defined as serum creatinine  $>1.5$  mg/dl] and chronic liver damage [defined as any grade of cirrhosis or chronic disease accompanied by any grade of known liver failure]), type of patient (medical or surgical), infection site, causal pathogens and evolutive information (stay in ICU, post-ICU stay, and death), and the Acute Physiology and Chronic Health Evaluation (APACHE II) and SOFA scores. Biochemical parameters were recorded upon admission and every 8 h, documenting peak concentration in the first 24 h corresponding to C-reactive protein, procalcitonin, NT-ProBNP, lactate, creatinine and bilirubin. A blood

count was obtained, together with a coagulation study, and the need for intravenous dobutamine and noradrenalin was determined. The patients were subjected to invasive monitoring (Pulse Induced Contour Cardiac Output [PICCO<sup>®</sup>]) according to the supervising physician. Measurements were obtained of cardiac index, global end-diastolic volume and extravascular lung water.<sup>7</sup>

The evaluated echocardiographic parameters (obtained in the first 24 h and at hospital discharge) were the end-diastolic diameter of the left ventricle (LV), left ventricular ejection fraction (LVEF) determined by the Simpson 4C method and through visual estimation, the left ventricular outflow tract velocity-time integral (LVOT VTI), the E/E' wave ratio (E' being regarded as the septal and lateral average), the degree of mitral valve insufficiency, tricuspid annular plane systolic excursion (TAPSE),<sup>8</sup> and the lateral tricuspid annulus tissue Doppler S wave. The echocardiographic evaluation was carried out in the first 24 h of patient admission by a member of the Department of Cardiology who recorded the study for posterior analysis by another independent cardiologist. A third evaluation was made with the recorded images in the event of discrepancies between the two interpretations.

Septic cardiomyopathy was defined as LV systolic dysfunction, taken to correspond to LVEF  $<50\%$ , attributable to sepsis (excluding patients with previous heart disease),

**Table 1** Baseline characteristics, personal history, infection site and type of pathogen in the total patients and in those with and without septic cardiomyopathy.

	Total sample (N = 57)	Patients without SM (N = 44) (77.2%)	Patients with SM (N = 13) (22.8%)	p
Age (years)	62.1 ± 16.3	64.4 ± 16.6	54.5 ± 12.9	0.055
Male gender	33 (57.9%)	25 (56.8%)	8 (61.5%)	1
Body mass index	27.70 ± 4.66	27.54 ± 5.24	27.04 ± 5.76	0.67
AHT	26 (45.6%)	22 (50%)	4 (30.8%)	0.221
Smoking	17 (29.8%)	15 (34.1%)	2 (15.4%)	0.304
COPD	5 (8.8%)	5 (11.4%)	0 (0%)	0.579
Diabetes	13 (22.8%)	10 (22.7%)	3 (23.1%)	0.999
Alcoholism	3 (5.3%)	3 (6.8%)	0 (0%)	1
Peripheral vascular disease	1 (1.8%)	0	1 (7.7%)	0.228
Obesity	17 (29.8%)	15 (34.1%)	2 (15.4%)	0.304
AS	1 (1.8%)	1 (2.3%)	0 (0%)	1
Dyslipidemia	12 (21.1%)	11 (25%)	1 (7.7%)	0.261
Renal failure	5 (8.8%)	5 (11.4%)	0 (0%)	0.579
Liver disease/cirrhosis	2 (3.5%)	2 (4.5%)	0 (0%)	1
<b>Infection site</b>				
Abdominal	15 (26.3%)	11 (25%)	4 (30.7%)	0.491
Urological	26 (45.6%)	22 (50%)	4 (30.7%)	0.165
Pulmonary	8 (14%)	6 (13.6%)	2 (15.3%)	0.97
Soft tissues	3 (5.3%)	2 (4.5%)	1 (7.6%)	0.235
Neurological	3 (5.3%)	2 (4.5%)	1 (7.6%)	0.235
Not known	2 (3.5%)	1 (2.3%)	1 (7.6%)	0.567
<b>Pathogen</b>				
Grampositive	12 (21%)	9 (20.5%)	3 (23.1%)	0.762
Gramnegative	42 (75.1%)	33 (75%)	9 (69.2%)	0.873
Mixed	3 (5.3%)	2 (4.5%)	1 (7.6%)	0.164

AS: acute stroke; COPD: chronic obstructive pulmonary disease; AHT: arterial hypertension; SM: septic cardiomyopathy. Quantitative variables expressed as mean ± standard deviation.

associated or not to right ventricle (RV) systolic dysfunction or LV diastolic dysfunction (understood as an alteration of the normal E/A wave ratio of the mitral filling pattern [E/A ratio <0.8; E/A >2], as well as E/E' ratio >15).<sup>9</sup>

Lactate concentration and central venous saturation were evaluated in order to assess a possible association to the presence or absence of SM.

The study was approved by the Research Ethics Committee of our center on 28 March 2014. The obtainment of written informed consent was not considered necessary.

## Statistical analysis

Quantitative variables were reported as the mean and standard deviation (SD), while categorical variables were reported as absolute number and percentage. The chi-squared test was used for the comparison of categorical variables, with application of the Fisher test when the conditions for chi-squared testing were not met in the  $2 \times 2$  tables. Pairs of quantitative variables in turn were compared using the Student *t*-test or Mann-Whitney *U*-test, depend-

ing on the distribution of the variables. The Student *t*-test for paired samples was used to assess significance of a given variable in one same individual (e.g., evolution of LVEF upon admission and at hospital discharge). Statistical significance was considered for  $p < 0.05$ .

## Results

A total of 57 patients were included in the study. Thirteen subjects (22.8%) presented SM in the first 24 h as diagnosed from the echocardiographic study. The mean patient age was  $62.1 \pm 16.3$  years, and 57.9% were males. Table 1 details the baseline characteristics and personal history. During the study period, a total of 144 patients with sepsis and/or septic shock were admitted to the ICU, of which 57 were included in the study while 87 were excluded for the reasons indicated in Fig. 1.

Most of the patients (68.4%) came from the emergency service, 24.6% from the hospital ward, and 7% were transferred from another hospital. The patients were predominantly medical cases (83.3%), while 8.3% were surgical patients and 8.3% polytrauma cases. The main infection site corresponded to the urological tract, and gramnegative bacteria were the most frequent organisms causing sepsis. There were no significant differences between the site of infection or the type of pathogen in the compared groups (Table 1).

Table 2 shows the findings considered globally and according to groups with or without SM, referred to the prognostic scales and laboratory test determinations of interest, documenting the most altered value in the first 24 h of admission. Significantly higher procalcitonin levels were recorded in the patients that developed SM ( $47.1 \pm 35.4$  vs.  $18.9 \pm 24.5$ ;  $p = 0.002$ ). Furthermore, the patients with SM yielded higher scores on the prognostic and multiorgan dysfunction scales such as the SOFA ( $9.91 \pm 3.82$  vs.  $7.47 \pm 3.41$ ;  $p = 0.037$ ) and APACHE II ( $20.8 \pm 8.7$  vs.  $19.6 \pm 8.1$ ;  $p = 0.667$ ) – though in this latter case statistical significance was not reached.

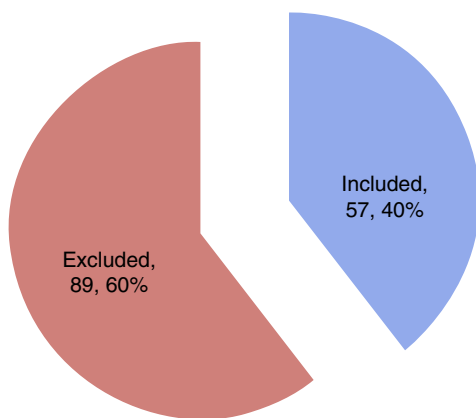


Figure 1 Excluded patients and reasons for exclusion.

Table 2 Prognostic scales and laboratory test determinations of interest in the total patients and in the groups with or without septic cardiomyopathy.

	Total sample (N = 57)	Patients without SM (N = 44) (77.2%)	Patients with SM (N = 13) (22.8%)	<i>p</i>
APACHE II	$19.9 \pm 8.2$	$19.6 \pm 8.1$	$20.8 \pm 8.7$	0.667
SOFA	$8 \pm 3.6$	$7.47 \pm 3.41$	$9.91 \pm 3.82$	0.037
Troponin (ng/ml)	$1.75 \pm 5.02$	$1.33 \pm 4.87$	$3.28 \pm 5.45$	0.235
NT-proBNP (pg/ml)	$5.828.4 \pm 6.713.3$	$5.806 \pm 6.905$	$5.910 \pm 6.232$	0.964
Procalcitonin (ng/ml)	$25.01 \pm 29$	$18.9 \pm 24.5$	$47.1 \pm 35.4$	0.002
CRP (mg/l)	$11.07 \pm 37$	$12.4 \pm 41.4$	$6 \pm 20.7$	0.606
Lactate (mg/dl)	$23.6 \pm 21.1$	$22.3 \pm 21.4$	$28.1 \pm 20.2$	0.404
pH	$7.31 \pm .10$	$7.30 \pm .10$	$7.37 \pm .07$	0.031
Fibrinogen (mg/dl)	$719.4 \pm 209.0$	$734.7 \pm 213.4$	$666 \pm 191.60$	0.320
Platelets (células/mm <sup>3</sup> )	$205.527 \pm 15.1924$	$227.813 \pm 155.210$	$125.666 \pm 111.473$	0.038

APACHE II: Acute Physiology and Chronic Health Evaluation II; SM: septic cardiomyopathy; NT-proBNP: N-terminal brain natriuretic peptide; CRP: C-reactive protein; SOFA: Sequential Organ Failure Assessment.

The laboratory test parameters correspond to the most altered values recorded in the first 24 h, coinciding with the first echocardiographic exploration.

**Table 3** Data of interest during follow-up in the ICU and in hospital referred to the total patients and groups with and without septic cardiomyopathy.

	Total sample (N=57)	Patients without SM (N=44) (77.2%)	Patients with SM (N=13) (22.8%)	p
Mechanical ventilation	25 (43.9%)	19 (43.2%)	6 (50.0%)	10
Vasoactive drugs	43 (75.4%)	34 (77.3%)	9 (75.0%)	0.69
Septic shock	40 (70.2%)	30 (68.2%)	10 (76.9%)	0.73
Maximum noradrenalin dose <sup>a</sup>	0.62 ± 0.63	0.56 ± 0.57	0.88 ± 0.84	0.21
Maximum dobutamine dose <sup>a</sup>	4.21 ± 2.57 (n 18)	2.71 ± 0.91	4.7 ± 2.8	0.63
ICU stay <sup>b</sup>	5 ± 55.16	6 ± 62.70	4 ± 10.66	0.60
Hospital stay <sup>b</sup>	23.93 ± 20.56	24.24 ± 20.85	22.66 ± 21.10	0.87
ICU mortality	8 (14.0%)	4 (9.1%)	4 (30.8%)	0.07
Hospital mortality	9 (15.8%)	5 (11.4%)	4 (30.8%)	0.18

SM: septic cardiomyopathy; ICU: Intensive Care Unit.

<sup>a</sup> Dose µg/kg/min.

<sup>b</sup> Median ± standard deviation, in days.

**Table 4** Echocardiographic variables upon admission referred to the total patients and groups without and with septic cardiomyopathy.

	Total sample (N=57)	Patients without SM (N=44) (77.2%)	Patients with SM (N=13) (22.8%)	p
EDDLV	45.43 ± 6.50	44.9 ± 6.4	47.1 ± 6.6	0.280
LVEF Simpson	54 ± 13.5	60.7 ± 6.94	34.1 ± 10.6	<0.001
LVOT VTI	21.73 ± 6.61	23.9 ± 5.21	13 ± 3.74	<0.001
E' wave	0.13 ± 0.20	0.09 ± 0.02	0.06 ± 0.01	0.003
E/E' ratio	11.24 ± 10.8	9.1 ± 3.1	16.9 ± 19.7	0.040
EDDRV	33.40 ± 6.57	33.6 ± 6.8	32.6 ± 5.7	0.666
TAPSE	20.5 ± 4.32	21.8 ± 3.82	16.3 ± 3.14	<0.001
Tricuspid annulus TDI S wave	0.13 ± 0.035	0.14 ± 0.03	0.10 ± 0.02	0.001

EDDRV: end-diastolic diameter of the right ventricle; EDDL: end-diastolic diameter of the left ventricle; TDI: tissue Doppler; LVEF: left ventricular ejection fraction; LVOT VTI: left ventricular outflow tract velocity-time integral; SM: septic cardiomyopathy; TAPSE: tricuspid annular plane systolic excursion.

Table 3 shows the general evolutive data. The patients that died did so during admission to the ICU. Of note is the fact that the mortality rate was greater in the group of patients with SM (30.8%, 4 patients) than in the group without SM (9.1%, 4 patients,  $p=0.07$ ) – though statistical significance was not reached.

The following data were obtained in the patients subjected to PICCO<sup>®</sup> monitoring (40 in total: 11 with SM and 29 without SM): cardiac index  $1.2 \pm 0.3$  l/min/m<sup>2</sup> vs.  $3.66 \pm 1.50$  l/min/m<sup>2</sup> in the patients with and without SM, respectively ( $p=0.058$ ); global end-diastolic volume  $481.5 \pm 74.2$  ml/m<sup>2</sup> vs.  $754.1 \pm 212.5$  ml/m<sup>2</sup> ( $p=0.124$ ); and extravascular lung water  $6.5 \pm 2.12$  vs.  $9.8 \pm 2.03$  ( $p=0.070$ ) – the differences between the two groups being nonsignificant. No significant differences were observed with regard to vasoactive drug treatment or the required noradrenalin ( $0.88 \pm 0.84$  vs.  $0.56 \pm 0.57$  µg/kg/min;  $p=0.211$ ) and dobutamine doses ( $4.7 \pm 2.8$  vs.  $2.71 \pm 0.91$  µg/kg/min;  $p=0.63$ ) in patients with SM, taking into account that noradrenalin was administered in 40 patients and dobutamine in 18.

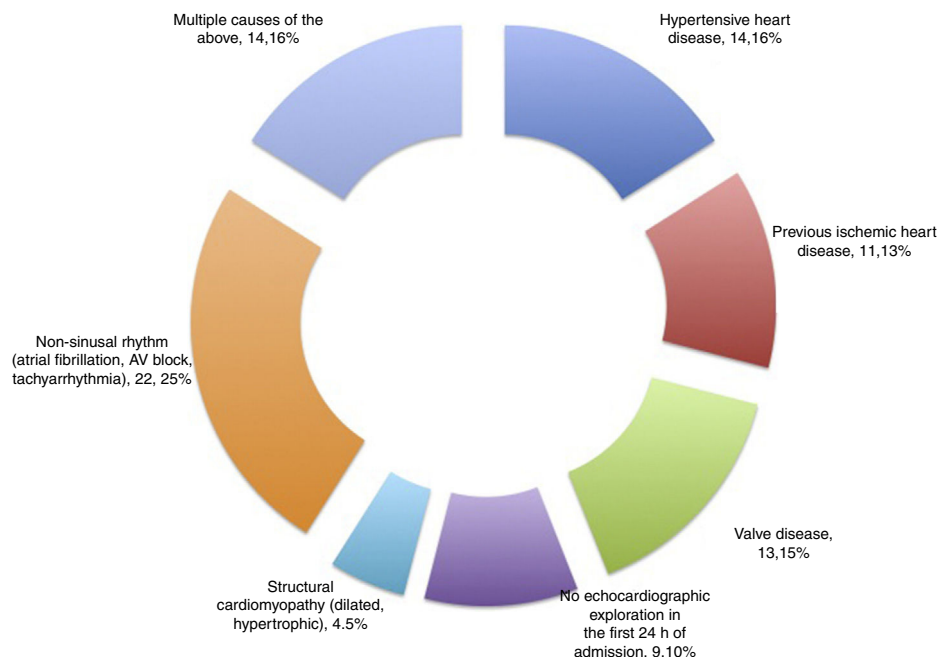
Forty patients suffered septic shock (70.2%), with no significant correlation to the presence or absence of SM,

since three patients with systolic dysfunction did not present hemodynamic shock. In relation to the above, we observed no significant differences between the two groups in terms of lactate concentration ( $23.03 \pm 21.68$  vs.  $27.59 \pm 19.54$ ;  $p=0.51$ ) or central venous saturation ( $74.69 \pm 13.34$  vs.  $68.32 \pm 16.25$ ;  $p=0.40$ ).

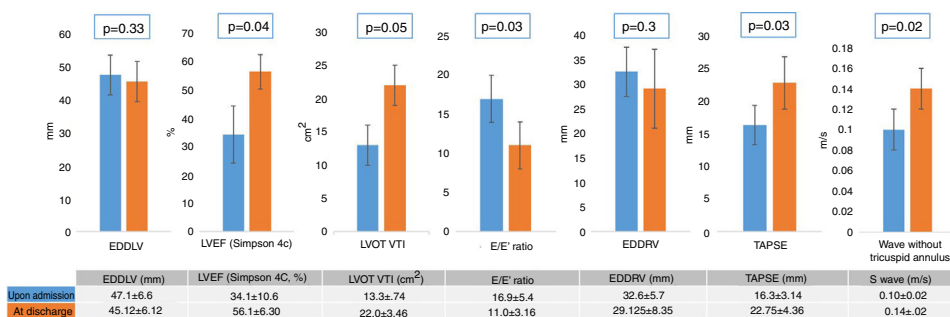
With regard to the echocardiographic data (Table 4), we recorded no significant differences in LV end-diastolic diameter between the patients with and without SM. On the other hand, the patients with SM showed an increase in left cavity filling pressure as a marker of diastolic dysfunction, reflected by the E/E' ratio ( $p=0.046$ ), as well as RV systolic dysfunction, measured by the lateral tricuspid annulus tissue Doppler S wave ( $0.14 \pm 0.03$  vs.  $0.10 \pm 0.02$ ;  $p=0.001$ ) and TAPSE ( $21.8 \pm 3.82$  vs.  $16.3 \pm 3.14$ ;  $p<0.001$ ). The control echocardiogram showed reversion of LV and RV dysfunction (Fig. 2) in all survivors with SM (Fig. 3).

## Discussion

There is some controversy regarding the clinical importance of SM, its impact upon patient mortality, and the most reliable parameters for assessing the disorder. Some authors<sup>10</sup>



**Figure 2** Variation of the echocardiographic measurements. EDDRV: end-diastolic diameter of the right ventricle; EDDL:V: end-diastolic diameter of the left ventricle; LVEF: left ventricular ejection fraction; LVOT VTI: left ventricular outflow tract velocity-time integral; TAPSE: tricuspid annular plane systolic excursion.



**Figure 3**

consider that the degree of physiological coherence of the indexes most commonly used to measure heart function is currently not clear. In our study the criterion for diagnosing myocardial dysfunction related to sepsis and septic shock has been LVEF <50%, as indicated in the Mayo Clinic study conducted by Pulido et al.<sup>6</sup> – though it is true that other investigators apply lower LVEF cut-off points, such as Vieillard-Baron,<sup>11</sup> who uses the definition LVEF <40% and a cardiac index of <3 l/min/m<sup>2</sup>. Although the first publications on SM estimated a prevalence of 60%,<sup>12</sup> the most recent studies set the prevalence between 26 and 27.7%.<sup>6,13</sup> This means that the prevalence recorded in our study (22.8%) lies at the lower limit of the most recently published values.<sup>6,14</sup> This may be due to several factors. On one hand, we applied strict inclusion and exclusion criteria, while on the other the evaluation of SM was made in the first 24 h of patient admission – in contrast to other authors who evaluate patients for SM during the first 2–3 days of admission.<sup>6,10,11,15</sup> Furthermore, in our study the definition of SM was restricted to systolic dysfunction, without including LV diastolic dysfunction

and RV dysfunction (considered isolatedly or combined) as done by other investigators. For example, in the study published by Pulido et al.,<sup>6</sup> involving one of the largest patient samples to date, the incidence of SM was 64% (68 of the 106 patients included in the study developed the disorder). The authors defined SM as the presence of any of the following: LV systolic dysfunction, LV diastolic dysfunction or RV systolic dysfunction. However, on analyzing those patients with isolated LV systolic dysfunction, the incidence decreased to 27% (29 patients), which is more consistent with the figure recorded in our own series. Likewise, the high incidence of diastolic dysfunction in the elderly population, with comorbidities, and in critically ill patients,<sup>16</sup> makes it very difficult to demonstrate that the disorder can be attributed to sepsis. This is the reason why diastolic dysfunction was excluded in the present study.<sup>17</sup> It also should be commented that late myocardial dysfunction<sup>18</sup> occurs from 24 h of admission and particularly when LV postload normalizes. This type of dysfunction was not studied in our sample in order to better differentiate intervention of the patient

inflammatory state and the pathophysiology of sepsis and its resolution. On considering this form of late dysfunction, the global prevalence of SM increases, as has been described in some studies such as that published by Boissier et al.,<sup>10</sup> with a cardiac dysfunction rate of 22% in the first hours of admission that is similar to the figure recorded in our series – though the rate was seen to increase to 31.8% on including the cases detected on the second and third day. A relationship was also observed in this study between mortality and the cases presenting a hyperkinetic pattern with low post-load – this contradicting the findings of other studies that relate myocardial systolic dysfunction to increased patient mortality.

With regard to the baseline condition of the patients, and in coincidence with other studies, we found no differences between the groups.<sup>6,19</sup> On the other hand, the patients that developed SM were comparatively younger – the difference coming close to statistical significance. The older age of patients who do not develop SM has been noted in other studies,<sup>16</sup> though some authors have reported the opposite, i.e., septic dysfunction being observed in older individuals.<sup>6</sup> The result obtained in our series may be due to the fact that we excluded patients with cardiac comorbidity, which are generally older individuals.

As to whether the origin of sepsis can influence the development of SM, we found no association, as commented above. The main infection site causing sepsis in our patient cohort corresponded to the urological tract, since this presentation involved lesser associated cardiac comorbidity (which constituted an exclusion criterion). Some studies have attempted to establish a causal relationship between lung infections and SM, though the acute respiratory distress syndrome that typically accompanies such infections often results in a degree of right ventricle failure.<sup>20</sup>

The patients with SM yielded a significantly higher SOFA score than those who did not develop SM. This was also noted in the study of Pulido et al.,<sup>6</sup> and would reflect the presence of SM within the context of a greater number of failing organs. Curiously, there were no appreciable differences in APACHE II score between the two groups, though the influence of younger age in the APACHE II scoring system possibly compensates the differences, as has been observed in other studies.<sup>16</sup>

On analyzing the biochemical tissue inflammation and damage markers, we found the elevation of procalcitonin – as a systemic inflammatory mediator related to the severity of infectious processes and bacterial infection<sup>21</sup> – to be an indicator of increased severity of tissue damage, hyperperfusion/hypoxia<sup>22</sup> and augmented secondary inflammation. The reported increased incidence of thrombocytopenia<sup>23</sup> in patients with SM is consistent with this. All the above supports the inclusion of SM within the multiorgan dysfunction syndrome associated to sepsis or septic shock.<sup>24</sup> However, in our study other parameters that would be expected to point in this same direction failed to reach statistical significance, such as troponin and lactate. A study<sup>25</sup> involving 93 patients suggests that natriuretic peptide elevation may be a reliable biochemical marker for predicting which patients will develop SM. In our cohort the natriuretic peptide values in the patients with SM were only slightly higher than those recorded among the patients without SM, and statistical

significance was not reached. We observed no significant differences in parameters related to the level of tissue perfusion, such as lactate or central venous saturation; we are therefore unable to draw conclusions regarding the role of tissue perfusion in the pathophysiology of SM.

There was no significant difference in mortality rate between the two groups, probably because of the sample size involved, though mortality did give the impression of being greater in the SM group (30.8% versus 9.1% in the group that did not develop SM). Deaths fundamentally occurred in the ICU, thereby conditioning shorter ICU stays. Although there is debate in the literature regarding the repercussions of the appearance of SM in terms of mortality,<sup>26</sup> recent studies suggest that it is indicative of a poor prognosis.<sup>14,16,27</sup>

With regard to the echocardiographic parameters, the echocardiographic exploration upon admission revealed a statistically significant decrease in the left ventricular out-flow tract velocity-time integral among the patients with SM versus those without. This is simply an echocardiographic parameter that reflects the presence of low cardiac output, and a decrease is therefore to be expected in patients that develop ventricular dysfunction in the context of sepsis. New tools such as two-dimensional speckle tracking echocardiography<sup>28</sup> have been described for evaluating cardiac function. In this regard, a study<sup>29</sup> involving 50 patients with sepsis and septic shock recorded alterations of the longitudinal parameters particularly in individuals with shock, even in those with preserved LVEF. This gives us a more realistic idea of cardiac dysfunction associated to sepsis and septic shock.

As expected from the definition of SM (reversible systolic dysfunction attributable to sepsis), all these parameters are corrected at patient discharge, with a return to normal levels for both LVEF and the echocardiographic recordings. Only some studies have used control echocardiography to confirm the reversibility of SM, though the publications that do so<sup>6,11</sup> have not found the reversibility rate to be particularly high (60–70%). This is because echocardiography cannot be performed in all patients that develop SM (due either to death or to unexplained reasons).

The main limitation of our study is the limited sample size involved (57 patients). Although there are other publications with a similar number of patients, the sample is not large enough to draw firm conclusions or perform multivariate analyses. We sought to be rigorous in selecting the patients, discarding all those with any evidence of prior heart disease. This resulted in rather slow recruitment of the study sample. Another limitation is the subjectiveness of echocardiography, which can lead to some variability in interpretation, since it is an operator-dependent technique. This circumstance partly accounts for the existence of published studies with different results – hence the importance of reporting our own findings.

Myocardial dysfunction attributable to sepsis and septic shock is not infrequent, and develops in patients of increased severity due to the septic involvement of a larger number of organs, with more pronounced tissue damage. This in turn yields higher scores on the severity scales and greater procalcitonin levels in those patients that develop

SM. The survivors recover heart function in the course of follow-up before hospital discharge.

Further studies involving larger patient samples are needed to draw conclusions in a field of research that has received little attention to date.

## Financial support

This study has received no financial support.

## Contribution of the authors

All the authors have made a substantial contribution to the conception and conduction of the study or interpretation of the data, as well as to the drafting, review or final approval of the manuscript.

Doctors Canabal, Narváez and Martín carried out the main field work referred to patient recruitment, the requesting of tests and measurement of variables. Doctors Giacomani and Alcalá collected most of the echocardiographic parameters. The student Alfonso Moron collaborated with data entry to the database and analysis. Doctor Sánchez-Casado performed the statistical analysis, and Dr. Magro participated in data collection.

All the authors have participated in final approval of the article.

## Conflict of interest

There are no conflicts of interest.

## Acknowledgements

Thanks are due to all the health professionals involved in patient care, the recording of variables and their subsequent analysis. The collaboration among different specialists and Departments proved very satisfactory.

## References

1. Singer M, Deutschman CS, Seymour CW, Shankar-Hari M, Annane D, Bauer M, et al. The third international consensus definitions for sepsis and septic shock (sepsis-3). *JAMA*. 2016;315:801–10. <http://dx.doi.org/10.1001/jama.2016.0287>.
2. Parker MM, Shelhamer JH, Bacharach SL, Green MV, Natanson C, Frederick TM, et al. Profound but reversible myocardial depression in patients with septic shock. *Ann Intern Med*. 1984;100:483–90.
3. Hochstadt A, Meroz Y, Landesberg G. Myocardial dysfunction in severe sepsis and septic shock: more questions than answers? *J Cardiothorac Vasc Anesth*. 2011;25:526–35. <http://dx.doi.org/10.1053/j.jvca.2010.11.026>.
4. Makara MA, Hoang KV, Ganesan LP, Crouser ED, Gunn JS, Turner J, et al. Cardiac electrical and structural changes during bacterial infection: an instructive model to study cardiac dysfunction in sepsis. *J Am Heart Assoc*. 2016;5:e003820. <http://dx.doi.org/10.1161/JAHA.116.003820>.
5. Sato R, Nasu M. A review of sepsis-induced cardiomyopathy. *J Intensive Care*. 2015;3:48. <http://dx.doi.org/10.1186/s40560-015-0112-5>.
6. Pulido JN, Afessa B, Masaki M, Yuasa T, Gillespie S, Herasevich V, et al. Clinical spectrum, frequency, and significance of myocardial dysfunction in severe sepsis and septic shock. *Mayo Clin Proc*. 2012;87:620–8. <http://dx.doi.org/10.1016/j.mayocp.2012.01.018>.
7. Moura TS, Rosa SA, Germano N, Cavaco R, Sequeira T, Alves M, et al. The accuracy of PiCCO® in measuring cardiac output in patients under therapeutic hypothermia – comparison with transthoracic echocardiography. *Med Intensiva*. 2017. <http://dx.doi.org/10.1016/j.medin.2017.03.007>, pii: S0210-5691(17)30141-9 [Epub ahead of print].
8. Olmos-Temois SG, Santos-Martínez LE, Álvarez-Álvarez R, Gutiérrez-Delgado LG, Baranda-Tovar FM. Interobserver agreement on the echocardiographic parameters that estimate right ventricular systolic function in the early postoperative period of cardiac surgery. *Med Intensiva*. 2016;40:491–8. <http://dx.doi.org/10.1016/j.medin.2016.02.013>.
9. Azcárate JA, Clau-Terre F, Pereira RV, de Mier MG, López AC, Ochagavía A, et al., Grupo de Trabajo de Cuidados Intensivos Cardiológicos y RCP de la SEMICYUC. Consensus document on ultrasound training in Intensive Care Medicine. Care process, use of the technique and acquisition of professional skills. *Med Intensiva*. 2014;38:33–40.
10. Boissier F, Razazi K, Seemann A, Bedet A, Thille AW, de Prost N, et al. Left ventricular systolic dysfunction during septic shock: the role of loading conditions. *Intensive Care Med*. 2017;43:633–42.
11. Viellard- Baron A, Prin S, Chergui K, Dubourg O, Jardin F. Hemodynamic instability in sepsis. Beside assessment by Doppler echocardiography. *Am J Respir Crit Care Med*. 2003;168:1270–6.
12. Vieillard-Baron A, Caille V, Charron C, Belliard G, Page B, Jardin F. Actual incidence of global left ventricular hypokinesia in adult septic shock. *Crit Care Med*. 2008;36:1701–6. <http://dx.doi.org/10.1097/CCM.0b013e318174db05>.
13. Rolando G, Espinoza ED, Avid E, Welsh S, Pozo JD, Vazquez AR, et al. Prognostic value of ventricular diastolic dysfunction in patients with severe sepsis and septic shock. *Rev Bras Ter Intensiva*. 2015;27:333–9.
14. Prabhu MM, Yalakala SK, Shetty R, Thakkar A, Sitapara T. Prognosis of left ventricular systolic dysfunction in septic shock patients. *J Clin Diagn Res*. 2015;9:OC05–8. <http://dx.doi.org/10.7860/JCDR/2015/10812.5640>.
15. Fuller BM, Mohr NM, Graetz TJ, Lynch IP, Dettmer M, Cullison K, et al. The impact of cardiac dysfunction on acute respiratory distress syndrome and mortality in mechanically ventilated patients with severe sepsis and septic shock: an observational study. *J Crit Care*. 2015;30:65–70.
16. Suárez JC, López P, Mancebo J, Zapata L. Diastolic dysfunction in the critically ill patient. *Med Intensiva (Engl Ed)*. 2016;40:499–510. <http://dx.doi.org/10.1016/j.medin.2016.06.006>.
17. Azcarate JA, Terré FC, Ochagavía A, Pereira RV. Papel de la ecocardiografía en la monitorización hemodinámica de los pacientes críticos. *Med Intensiva*. 2012;36:220–32.
18. Repessé X, Charron C, Vieillard-Baron A. Evaluation of left ventricular systolic function revisited in septic shock. *Crit Care*. 2013;17:164.
19. Arméstar F, Mesalles E, López-Ayerbe J, Roca J. Moderate-severe myocardial depression during septic shock: a pilot study. *Med Intensiva*. 2012;36:445–6.
20. Dhainaut JF, Pinsky MR, Nouria S, Slomka F, Brunet F. Right ventricular function in human sepsis: a thermodilution study. *Chest*. 1997;112:1043–9.
21. Hoebner SH, van der Geest PJ, Nieboer D, Groeneveld AB. The diagnostic accuracy of procalcitonin for bacteraemia: a systematic review and meta-analysis. *Clin Microbiol Infect*. 2015;21:474–81.
22. Zhou X, Liu D, Su L, Yao B, Long Y, Wang X, et al. Use of stepwise lactate kinetics-oriented hemodynamic therapy could improve



- the clinical outcomes of patients with sepsis-associated hyperlactatemia. *Crit Care*. 2017;21:33, <http://dx.doi.org/10.1186/s13054-017-1617-1>.
23. Marco-Schulke CM, Sánchez-Casado M, Hortigüela-Martín VA, Quintana-Díaz M, Rodríguez-Villar S, Pérez-Pedrero MJ, et al. Trombocitopenia grave al ingreso en una unidad de cuidados intensivos en pacientes con disfunción multiorgánica. *Med Intensiva*. 2012;36:185–92.
  24. Landesberg G, Levin PD, Gilon D, Goodman S, Georgieva M, Weissman C, et al. Myocardial dysfunction in severe sepsis and septic shock: no correlation with inflammatory cytokines in real-life clinical setting. *Chest*. 2015;148:93–102.
  25. Kumar A, Parrillo JE, Kumar A. Clinical review: myocardial depression in sepsis and septic shock. *Crit Care*. 2002;6: 500–8.
  26. Post F, Weilemann LS, Messow CM, Sinning C, Munzel T. B-type natriuretic peptide as a marker for sepsis-induced myocardial depression in intensive care patients. *Crit Care Med*. 2008;36:3030–7.
  27. Berrios RAS, O'Horo JC, Velagapudi V, Pulido JN. Correlation of left ventricular systolic dysfunction determined by low ejection fraction and 30-day mortality in patients with severe sepsis and septic shock: a systematic review and meta-analysis. *J Crit Care*. 2014;29:495–9.
  28. Ng PY, Sin WC, Ng AK-Y, Chan WM. Speckle tracking echocardiography in patients with septic shock: a case control study (SPECKSS). *Crit Care*. 2016;20, <http://dx.doi.org/10.1186/s13054-016-1327-0>.
  29. Geyer H, Caracciolo G, Abe H, Wilansky S, Carerj S, Gentile F, et al. Assessment of myocardial mechanics using speckle tracking echocardiography: fundamentals and clinical applications. *J Am Soc Echocardiogr*. 2010;23:351–69.