



## ORIGINAL

## Mechanical ventilation in Spain, 1998–2016: Epidemiology and outcomes<sup>☆</sup>



O. Peñuelas<sup>a</sup>, F. Frutos-Vivar<sup>a,\*</sup>, A. Muriel<sup>b</sup>, J. Mancebo<sup>c</sup>, A. García-Jiménez<sup>d</sup>,  
R. de Pablo<sup>e</sup>, M. Valledor<sup>f</sup>, M. Ferrer<sup>g</sup>, M. León<sup>h</sup>, J.M. Quiroga<sup>i</sup>, S. Temprano<sup>j</sup>,  
I. Vallverdú<sup>k</sup>, R. Fernández<sup>l</sup>, F. Gordo<sup>m</sup>, A. Anzueto<sup>n</sup>, A. Esteban<sup>a</sup>

<sup>a</sup> Hospital Universitario de Getafe y Centro de Investigación en Red de Enfermedades Respiratorias (CIBERES), Madrid, Spain

<sup>b</sup> Unidad de Bioestadística Clínica Hospital Ramón y Cajal, Instituto Ramón y Cajal de Investigaciones Sanitarias (IRYCIS), Centro de Investigación en Red de Epidemiología y Salud Pública (CIBERESP), Madrid, Spain

<sup>c</sup> Hospital Universitari de la Santa Creu i Sant Pau, Barcelona, Spain

<sup>d</sup> Hospital Arquitecto Marcide, Ferrol, Spain

<sup>e</sup> Hospital Ramón y Cajal, Madrid, Spain

<sup>f</sup> Hospital de San Agustín, Avilés, Spain

<sup>g</sup> Hospital Clinic-IDIBAPS, Barcelona, Spain

<sup>h</sup> Hospital Arnau de Vilanova, Lleida, Spain

<sup>i</sup> Hospital de Cabueñes, Gijón, Spain

<sup>j</sup> Hospital 12 de Octubre, Madrid, Spain

<sup>k</sup> Hospital Universitari Sant Joan, Reus, Spain

<sup>l</sup> Hospital Sant Joan de Déu, Fundació Althaia, Manresa, Spain

<sup>m</sup> Grupo de Investigación en Patología Crítica, Universidad Francisco de Vitoria, Pozuelo de Alarcón, Hospital Universitario del Henares, Coslada, Spain

<sup>n</sup> South Texas Veterans Health Care System and University of Texas Health, San Antonio, Texas, United States

Received 2 February 2020; accepted 15 April 2020

Available online 29 November 2020

### KEYWORDS

Epidemiology;  
Mechanical  
ventilation;  
Mortality;  
Variability

### Abstract

**Purpose:** To evaluate changes in the epidemiology of mechanical ventilation in Spain from 1998 to 2016.

**Design:** A post hoc analysis of four cohort studies was carried out.

**Setting:** A total of 138 Spanish ICUs.

**Patients:** A sample of 4293 patients requiring invasive mechanical ventilation for more than 12 h or noninvasive ventilation for more than one hour.

**Interventions:** None.

<sup>☆</sup> Please cite this article as: Peñuelas O, Frutos-Vivar F, Muriel A, Mancebo J, García-Jiménez A, de Pablo R, et al. Ventilación mecánica en España, 1998-2016: epidemiología y desenlaces. *Med Intensiva*. 2021;45:3–13.

\* Corresponding author.

E-mail address: [fernando.frutos@salud.madrid.org](mailto:fernando.frutos@salud.madrid.org) (F. Frutos-Vivar).

*Variables of interest:* Demographic variables, reason for mechanical ventilation, variables related to ventilatory support (ventilation mode, tidal volume, PEEP, airway pressures), complications during mechanical ventilation, duration of mechanical ventilation, ICU stay and ICU mortality.

*Results:* There was an increase in severity (SAPS II 43 points in 1998 vs. 47 points in 2016), changes in the reason for mechanical ventilation (decrease in chronic obstructive pulmonary disease and acute respiratory failure secondary to trauma, and increase in neurological disease and post-cardiac arrest). There was an increase in noninvasive mechanical ventilation as the first mode of ventilatory support ( $p < 0.001$ ). Volume control ventilation was the most commonly used mode, with increased support pressure and pressure-regulated volume-controlled ventilation. A decrease in tidal volume was observed (9 ml/kg actual b.w. in 1998 and 6.6 ml/kg in 2016;  $p < 0.001$ ) as well as an increase in PEEP (3 cmH<sub>2</sub>O in 1998 and 6 cmH<sub>2</sub>O in 2016;  $p < 0.001$ ). In-ICU mortality decreased (34% in 1998 and 27% in 2016;  $p < 0.001$ ), without geographical variability (median OR 1.43;  $p = 0.258$ ).

*Conclusions:* A significant decrease in mortality was observed in patients ventilated in Spanish ICUs. These changes in mortality could be related to modifications in ventilation strategy to minimize ventilator-induced lung injury.

© 2020 Published by Elsevier España, S.L.U.

## PALABRAS CLAVE

Epidemiología;  
Ventilación  
mecánica;  
Mortalidad;  
Variabilidad clínica

## Ventilación mecánica en España, 1998-2016: epidemiología y desenlaces

### Resumen

*Objetivo:* Evaluar cambios en la epidemiología de la ventilación mecánica en España desde 1998 hasta 2016.

*Diseño:* Análisis *post-hoc* de cuatro estudios de cohortes.

*Ámbito:* 138 UCI españolas.

*Pacientes:* 4293 enfermos con ventilación mecánica invasiva más de 12 horas o no invasiva más de una hora.

*Intervenciones:* Ninguna.

*Variables de interés principales:* Demográficas, motivo de ventilación mecánica, relacionadas con el soporte ventilatorio (modo de ventilación, volumen *tidal*, PEEP, presiones en vía aérea), complicaciones, duración de la ventilación mecánica, estancia y mortalidad en la UCI.

*Resultados:* Se observa aumento en la gravedad (SAPS II 43 puntos en 1998 frente a 47 puntos en 2016), cambios en el motivo de la ventilación mecánica (disminución de la enfermedad pulmonar obstructiva crónica e insuficiencia respiratoria secundaria a traumatismo y aumento de la patología neurológica y tras parada cardíaca). Aumento en la ventilación no invasiva como primer modo de soporte ventilatorio ( $p < 0,001$ ). El modo más utilizado es la ventilación controlada por volumen con un aumento de la presión de soporte y de la ventilación controlada por volumen regulada por presión. Disminuyó el volumen *tidal* (9 ml/kg peso estimado en 1998 y 6,6 ml/kg en 2016,  $p < 0,001$ ) y aumentó la PEEP (3 cmH<sub>2</sub>O en 1998 y 6 cmH<sub>2</sub>O en 2016,  $p < 0,001$ ). La mortalidad disminuye (34% en 1998 y 27% en 2016;  $p < 0,001$ ) sin variabilidad geográfica (MOR 1,43;  $p = 0,258$ ).

*Conclusiones:* Se observa una disminución en la mortalidad de los enfermos ventilados en UCI españolas. Esta disminución podría estar relacionada con cambios para minimizar el daño inducido por el ventilador.

© 2020 Publicado por Elsevier España, S.L.U.

## Introduction

Mechanical ventilation (MV) is probably the most widely used therapeutic procedure in Intensive Care Units (ICUs), and is a technique with a long history. Following a period of ventilation with negative pressure, induced by the invention of the

iron lung in 1929, Ibsen introduced positive pressure ventilation outside the operating room in 1952.<sup>1</sup> This marked the birth of the Intensive Care Unit. Observational studies<sup>2-10</sup> have shown the percentage of patients admitted to the ICU who require MV to be between 33–53%. Studies in the general population<sup>11</sup> in turn have found that about 2% of all

adults receive MV at one time or other (39% during more than 96 h), and the percentage is moreover rising.<sup>12–16</sup>

Although the use of MV is associated to a decrease in mortality among patients with acute respiratory failure (ARF), the technique is not without complications<sup>17</sup> – the most important of which is ventilator-induced lung injury, which can sustain or worsen lung dysfunction. As a result, in the last few decades many clinical trials have been carried out with the purpose of preventing or minimizing ventilator-induced lung injury, based on the use of noninvasive positive pressure ventilation,<sup>18</sup> lung protective ventilation strategies,<sup>19,20</sup> adjustment of positive end-expiratory pressure (PEEP),<sup>21</sup> ventilation in prone decubitus<sup>22</sup> and the early use of neuromuscular blockers,<sup>23</sup> and of reducing the duration of MV through the adjustment of sedation<sup>24,25</sup> and early identification of the moment for starting patient weaning from MV.<sup>26</sup> Some of these interventions, which initially focused on the management of patients with acute respiratory distress syndrome (ARDS), now appear to be applicable to all patients subjected to MV.<sup>27</sup>

The present study was carried out to evaluate the changes that have taken place in the way in which MV is applied in patients admitted to Spanish ICUs participating in four international studies on MV. In addition, an analysis was made to determine whether such changes are accompanied by changes in patient outcomes, and whether variability is observed conditioned to the geographical setting involved, according to the different regional societies of the Spanish Society of Intensive and Critical Care Medicine and Coronary Units (*Sociedad Española de Medicina Intensiva, Crítica y Unidades Coronarias* [SEMICYUC]). Some of the results of this analysis have been previously published in a Doctoral Thesis.<sup>28</sup>

## Patients and methods

A *post hoc* analysis was made of four prospective, multicenter observational studies carried out during a one-month period in the years 1998,<sup>4,29,30</sup> 2004,<sup>31</sup> 2010<sup>32</sup> and 2016.<sup>33</sup> The studies included patients requiring invasive MV during more than 12 h or noninvasive ventilation during more than one hour. For the purpose of the present analysis, we only included those patients admitted to ICUs in Spain.

The methodology used was similar in all four studies, with some differences in the recorded variables (the list of variables compiled in each study are described in Table S1 of the Supplementary material). All the studies recorded the following variables: basal demographic data (age, gender, estimated weight and height, severity estimated by the SAPS II score), and reason for starting MV. Likewise, the following parameters were recorded on a daily basis and for as long as the patient was subjected to MV (up to a maximum of 28 days): arterial gases, parameters programmed and measured by the ventilator (mode, tidal volume, respiratory frequency, fraction of inspired oxygen, PEEP, peak pressure, plateau pressure), administration of sedatives and neuromuscular blockers, and the appearance of complications such as ARDS, ventilator-associated pneumonia (VAP), sepsis and organ dysfunction (cardiovascular, renal, hepatic, hematological), and the date of and situation at discharge from the ICU and from hospital. Table S2 of the Supplemen-

tary material describes the operating definitions used. The Ethics Committees of each hospital approved the study protocol, and the need for informed consent was adjusted to the decision of each Committee.

In the studies of 1998 and 2004, each investigator received a manual describing the data to be recorded and the definitions used, together with data recording forms in paper format. The investigators completed a form for each patient included in the study and forwarded it to the coordinating center (Hospital Universitario de Getafe, Madrid) for inclusion in an electronic database. In the studies of 2010 and 2016, data registry took place through a secure website. In addition, before the analysis, all the data were checked for atypical and potentially erroneous values and information. The cases with missing information referred to principal study variables were not included in the analysis. The STROBE (Strengthening the Reporting of Observational Studies in Epidemiology) statement on observational cohort studies was followed.<sup>34</sup>

## Statistical analysis

The results were reported as the mean (standard deviation [SD]), median (percentile 25, percentile 75), absolute frequencies and proportions, as applicable. The comparison of continuous variables was made based on analysis of variance (ANOVA) or the Kruskal–Wallis test, while the chi-square test was used for the comparison of categorical variables.

In order to estimate the changes over time in the different ventilatory strategies, we chose two of them: non-invasive ventilation as first ventilatory support mode, and the early application (within the first 48 h of ventilatory support) of a protective ventilation strategy, defined as a tidal volume < 6 ml/kg estimated body weight (b.w.) or a tidal volume < 8 ml/kg and a peak pressure or plateau pressure < 30 cmH<sub>2</sub>O. To the effects of analysis, and for each strategy, a multivariate logistic regression model was generated. The model included the following variables: year-study (coded as dummy variable), age, gender, SAPS II score, and the reason for starting MV recoded into three groups: exacerbated chronic respiratory failure (chronic obstructive pulmonary disease [COPD], asthma, other chronic lung disease), hypoxemic acute respiratory failure (ARDS, postoperative respiratory failure, heart failure, pneumonia, sepsis, aspiration, trauma), and neurological disease. Multilevel estimation adjustment was performed (patients at the first level and regional societies at the second level). Estimation of the random variability of the results among the regional societies of the SEMICYUC was based on calculation of the median odds ratio (MOR), defined as the mean value of the odds ratio (OR) between two patients corresponding to different regional societies (one of greater risk and the other of lesser risk) and equal values in all the variables of the model, on randomly selecting two societies. The MOR may be conceived as the median increase in risk which a patient would have on being transferred to a geographical region of greater risk.<sup>35</sup>

Estimation of the evolution over time of mortality in the ICU was based on a logistic regression model, with multilevel estimation adjustment (patients at the first level and regional societies at the second level). The model

**Table 1** Comparison of the characteristics of the Intensive Care Units participating in each study.

	1998N = 72	2004N = 32	2010N = 102	2016N = 86
<i>Region<sup>a</sup></i>				
Andalusia	7	2	12	5
Aragon	1	1	3	3
Asturias	3	3	3	3
Canarias	3	–	5	3
Castilla-La Mancha	3	5	5	4
Castilla y León	7	–	7	9
Catalonia	12	4	13	12
Extremadura	–	–	2	3
Galicia	6	2	5	4
Balearic Islands	1	1	2	1
Madrid	11	6	23	25
Murcia	4	2	4	2
North (Cantabria, Basque Country, La Rioja, Navarre)	7	2	6	6
Valencia	7	4	12	6
<i>Number of beds, median (P25,P75)</i>	12(10.16)	14(10.19)	14(10.19)	n.r.
<i>Type of Unit, n (%)</i>				
Medical-surgical	61 (85)	26 (81)	84 (82)	64 (74)
Medical	9 (12)	5 (16)	12 (12)	13 (15)
Traumatology	2 (3)	–	1 (1)	2 (2)
Neurology/neurosurgery	–	1 (3)	4 (4)	3 (3)
Respiratory	–	–	1(1)	1 (1)
Surgical	–	–	–	3 (1)

n.r.: not registered.

<sup>a</sup> Regions corresponding to the regional societies of the *Sociedad Española de Medicina Intensiva, Crítica y Unidades Coronarias* (SEMICYUC).

included the following variables: year-study (coded as dummy variable), age, gender, SAPS II score, reason for starting MV, variables related to the patient course during MV (complications during MV, such as ARDS, sepsis, ventilator-associated pneumonia, organ dysfunction), variables related to ventilatory support (use of noninvasive ventilation, protective ventilation strategy) and variables related to treatment (sedation, neuromuscular block). Estimation of the random variability of the results among the regional societies was based on calculation of the MOR.

The Stata 14.0 statistical package (StataCorp LP, College Station, TX, USA) was used throughout for data analysis.

## Results

### Participating Units and included patients

A total of 138 ICUs participated in the four studies, and 14 of them (10%) participated in all four studies. Table 1 shows the distribution by geographical areas and the characteristics of the Units participating in each study.

In the course of the study periods, a total of 17,205 patients were admitted to the participating Units; of these patients, 4293 (25%) met the inclusion criteria. Table 2 compares the basal characteristics of the patients among the four studies. One feature that persisted over time was the fact that patients requiring MV were typically males in the sixth decade of life, though an increase was observed in patient severity upon admission (from a mean SAPS II

score of 43 points in 1998, estimating an in-hospital mortality rate of 30.5%, to a mean SAPS II score of 47 points in 2016, estimating an in-hospital mortality rate of 39%;  $p < 0.001$ ), as well as a significant change ( $p < 0.001$ ) in the reason for mechanical ventilation (decrease in COPD and of acute respiratory failure secondary to trauma, and increase in neurological disease and post-cardiac arrest).

### Ventilatory support

#### Noninvasive ventilation

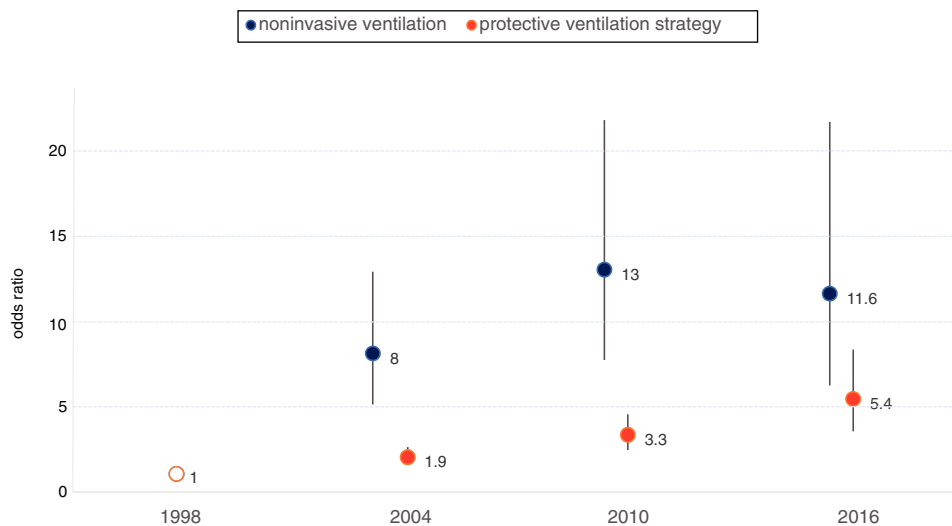
Over time, a significant increase was observed ( $p < 0.001$ ) in the application of noninvasive mechanical ventilation as first ventilatory support mode, though with a tendency to decrease in the last study: in 1998, a total of 4% of the patients were initially subjected to noninvasive ventilation, versus 18%, 21% and 17% in 2004, 2010 and 2016, respectively. Table S3 of the Supplementary material shows the characteristics of the patients initially subjected to noninvasive ventilation.

The duration of noninvasive ventilation in the ICU also changed over time, with a median of 36 h in 2004, 23 h in 2010, and 27 h in 2016. Approximately one-third of the patients required invasive ventilation (Table S3 of the Supplementary material). Significant variations were observed ( $p < 0.001$ ) in the percentage failure rate, due to greater failure in the year 2004 (41%) versus similar percentages in the other three studies.

**Table 2** Comparison of the basal characteristics of the patients included in each study.

	1998N = 1103	2004N = 503	2010N = 1559	2016N = 1128
Age, mean (SD), years	60 (17)	62 (16)	63 (16)	63 (16)
Females, n (%)	366 (33)	173 (34)	538 (34)	395 (35)
SAPS II, mean (SD), points	44 (17)	43 (16)	46 (18)	47 (18)
Reason for starting MV <sup>a</sup> , n (%)				
Chronic obstructive pulmonary disease	136 (12)	44 (9)	104 (7)	56 (5)
Asthma	10 (1)	3 (1)	13 (1)	12 (1)
Other chronic lung disease	16 (1)	12 (2)	20 (1)	23 (2)
Acute respiratory distress syndrome	42 (4)	11 (2)	45 (3)	28 (2)
Postoperative respiratory failure	207 (19)	50 (10)	230 (15)	210 (19)
Heart failure	109 (10)	53 (10)	183 (12)	104 (9)
Aspiration	20 (2)	11 (2)	33 (2)	21 (2)
Pneumonia	125 (11)	61 (12)	142 (9)	109 (10)
Sepsis	71 (6)	50 (10)	141 (9)	86 (9)
Trauma	108 (10)	23 (5)	59 (4)	39 (3)
Cardiac arrest	33 (3)	19 (4)	94 (8)	69 (6)
Other cause of acute respiratory failure	42 (4)	32 (6)	83 (5)	56 (5)
Neurological disease	221 (20)	128 (25)	400 (26)	303 (27)
Neuromuscular disease	11 (1)	6 (1)	12 (1)	12 (1)

<sup>a</sup> More than one cause of acute respiratory failure could be indicated in the study of 1998.



**Figure 1** Adjusted probability of the use of noninvasive ventilation and of protective ventilation strategies over time. Adjustment is made according to year-study (coded as dummy variable, taking as reference the first study published in 1998), age, gender, SAPS II score and reason for starting MV.

In the multivariate analysis, on adjusting for demographic variables and the reason for starting MV, a significant increase in the use of the technique was observed over time (Fig. 1). Geographic variability was recorded in the application of noninvasive ventilation, though such variability decreased over time from MOR 1.85 (95% confidence interval [95%CI]: 0.90–2.80) in 1998 to MOR 1.44 (95% confidence interval: 1.14–1.74) in 2016.

**Invasive ventilation**

Table 3 compares the changes recorded in ventilation modes and ventilatory parameters. From the time of the first study, significant changes were seen in the way of ventilating the

patients. Although volume control ventilation remained the most widely used ventilation mode, a gradual increase was observed in the use of pressure support and dual modes such as pressure-regulated volume control ventilation.

A gradual decrease was observed in programmed tidal volume, from an average of 9 ml/kg estimated body weight in 1998 to a mean tidal volume of 6.6 ml/kg estimated body weight in 2016 ( $p < 0.001$ ) (Fig. 2A), together with a statistically significant increase ( $p < 0.001$ ) in applied PEEP, from an average of 3 cmH<sub>2</sub>O in 1998 to a mean PEEP of 6 cmH<sub>2</sub>O in 2016 (Fig. 2B). Fig. 3 shows the time course of the tidal volume-PEEP ratio in patients with and without criteria of ARDS.

**Table 3** Evolution of the use of ventilation modes and programmed ventilatory parameters at the start of mechanical ventilation.

	1998	2004	2010	2016
<i>Ventilation modes, days-mode per 1000 days-ventilation</i>				
Volume control ventilation	773	664	460	420
PS	50	77	182	263
SIMV	33	14	9	2
SIMV-PS	65	61	47	10
Pressure control ventilation	52	60	58	52
PRVC	-	97	208	206
APRV/BIPAP	-	21	28	42
Other	27	7	8	4
<i>Tidal volume</i>				
ml, mean (SD)	635 (110)	568 (113)	519 (77)	488 (72)
ml/kg estimated body weight, mean (SD)	9.0 (1.9)	7.8 (1.9)	7.0 (1.5)	6.6 (1.4)
ml/kg ideal weight, mean (SD)	n.r.	9.3 (1.4)	8.4 (1.6)	8.1 (1.3)
<i>PEEP, mean (SD), cmH<sub>2</sub>O</i>				
	3 (3)	5 (4)	6 (3)	6 (3)
<i>Peak pressure, mean (SD), cmH<sub>2</sub>O</i>				
	31 (8)	29 (9)	27 (8)	26 (7)
<i>Plateau pressure, mean (SD), cmH<sub>2</sub>O</i>				
	21 (4)	21 (6)	19 (6)	19 (6)
<i>Driving pressure, mean (SD), cmH<sub>2</sub>O</i>				
	18 (4)	17 (6)	14 (5)	13 (5)

APRV: airway pressure release ventilation; BIPAP: bilevel/biphasic positive airway pressure; PRVC: pressure-regulated volume control; SD: standard deviation; n.r.: not registered; SIMV: synchronized intermittent mandatory ventilation; PEEP: positive end-expiratory pressure; PS: pressure support.

The mentioned changes implied a significant decrease ( $p < 0.001$ ) in both plateau pressure and driving pressure (Table 3).

Likewise, the group of patients with ARDS (associated to MV or as a complication arising during MV) showed an increase in ventilation in prone decubitus, from 16% in 1998 to 3% in 2004, 13% in 2010 and 30% in 2016.

The adjusted model for assessing the evolution over time of the early application (within the first 48 h of ventilatory support) of a protective ventilation strategy revealed a significant increase over time (Fig. 1). Geographical differences were also observed with this strategy, varying from MOR 1.69 (95%CI: 1.26–2.12) in 1998 to MOR 1.55 (95%CI: 1.22–1.87) in 2016.

## Outcomes

Table 4 shows the variation of outcomes over time. In general, statistically significant changes were recorded referred to the presence of complications and organ dysfunction, with a clinically relevant variation over time of some complications (e.g., an extraordinarily high incidence of ARDS in the study of 2004). It should be noted that although there were statistically significant differences, in the case of the duration of ventilatory support they could be less relevant from the clinical perspective (differences of only 1–2 days). Likewise, no relevant differences were observed in the days of stay in the ICU or in hospital.

Mortality in the ICU experienced a significant change between 2004 and 2010, with a similar percentage being recorded in 2016. Table S4 of the Supplementary material shows the descriptive analysis of mortality in each study. Fig. 4 displays the raw and adjusted mortality probability rates over time, taking as reference (odds ratio 1)

the study of 1998. The multilevel logistic regression model showed no geographical variability in ICU mortality (MOR 1.43;  $p = 0.258$ ).

We also recorded a significant decrease over time in the standardized mortality rate, though it remained stable from 2010 onwards (Table 4).

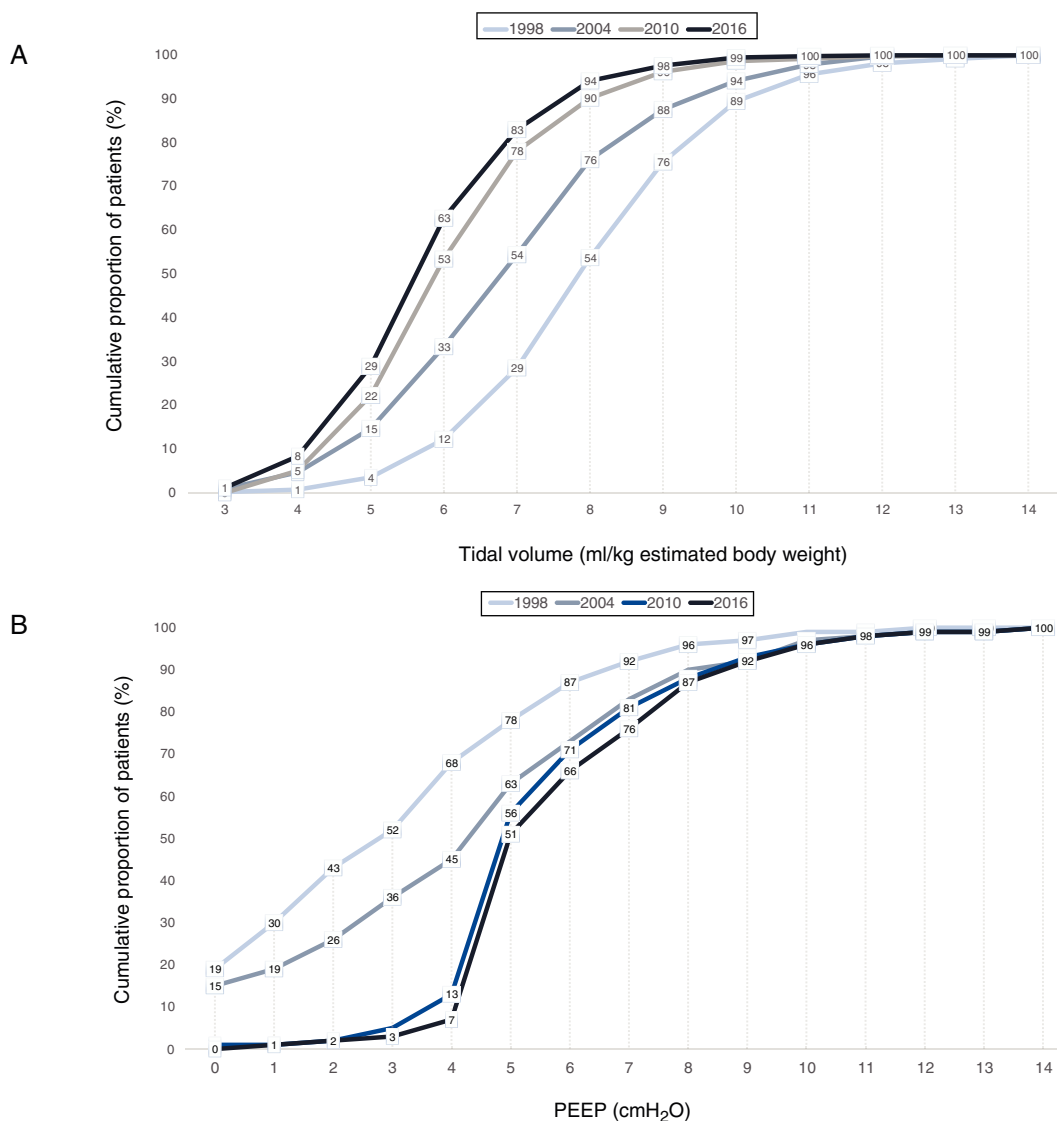
The studies of 2010 and 2016 recorded limitation of life support instructions. In 2010, a total of 15% of the patients had such instructions, and their in-hospital mortality rate was 89%. In 2016, the percentage increased to 19% of the patients, with an in-hospital mortality rate of 90%.

## Discussion

The main finding of our study is that the mortality rate among patients requiring MV in Spanish ICUs has decreased over the last 18 years, though the figure has remained stable at 27% since the year 2010 - albeit with a slightly higher severity index in 2016 (47 points, predicted mortality rate of 39%) than in 2010 (46 points, predicted mortality rate of 37%). These changes in mortality have been associated to changes in clinical practice, with the generalized adoption (though with differences depending on the geographical setting) of protective ventilation strategies, reducing tidal volume to allow airway pressure to be kept below the level considered to be damaging to the lungs.<sup>36</sup>

The mortality observed in this study corresponds to the lower mortality range reported in both studies including patients from different countries<sup>9,37</sup> and in national studies.<sup>38–45</sup> In the course of the 18-year period between the first and the last study, we recorded a progressive decrease in mortality, though the figures remained similar in the last two studies. Furthermore, this decrease has occurred despite a change in the case-mix of the ventilated





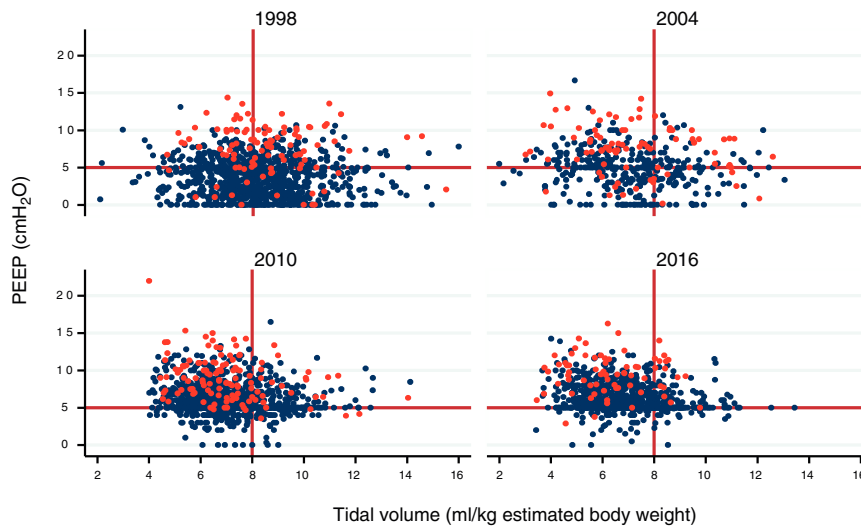
**Figure 2** Cumulative proportion (in each year of study) of patients according to: A) tidal volume in ml/kg estimated body weight. A curve shift to the left is observed over time, indicating that a greater proportion of patients are being ventilated with a lesser tidal volume; B) PEEP in cmH<sub>2</sub>O. A curve shift to the right is observed over time, indicating that there has been an increase in the PEEP level with which the patients are ventilated.

patients, characterized by an increase in the latest studies of patients with neurological disease, whose mortality rate is higher than in patients with other disease conditions such as heart failure or COPD – the presence of which has gradually decreased in the Units that have participated in our studies. A relevant finding is the fact that no geographical variability of mortality in the ICU was observed.

The investigation of MV in the last two decades evidences changes in routine clinical practice,<sup>31–33</sup> though there is still significant heterogeneity in its implementation.<sup>46</sup> One of the changes would be an increased utilization of noninvasive ventilation as the first ventilatory support measure. Few studies have evaluated this evolution over time. A French study reported an increase from 16% in 1997 to 24% in 2011.<sup>18</sup> In Spain we have also observed an increase in the use of noninvasive mechanical ventilation as first ventilatory support mode, with a percentage use similar to that reported

in other countries<sup>47</sup> – though in our case significant variability is seen among the different regional societies of the SEMICYUC.

Technological advances in the field of MV have caused ventilators to evolve from simple machines offering few options to microprocessor-based systems allowing a broad range of ventilation modes. At present there are almost 200 ventilatory mode denominations, though many of them are similar in terms of their operating characteristics.<sup>48</sup> While to date no studies have demonstrated the superiority of one mode over the rest,<sup>49</sup> the preferred mode – as in other studies<sup>39,42,44</sup> – remains the volume assist-control strategy, though its use has gradually decreased in favor of partial support modes such as pressure support, or dual modes such as volume control ventilation with pressure regulation. Mention must be made of the gradual decrease in the use of synchronized intermittent mandatory ventilation (SIMV),



**Figure 3** Relationship between tidal volume (in ml/kg estimated body weight) and PEEP in each year of study. A gradual shift upwards and to the left is observed, indicating that ventilation is performed with lower tidal volume settings and higher PEEP levels, in both patients with ARDS (red circles) and in patients without ARDS (blue circles).

**Table 4** Evolution of the complications during mechanical ventilation and of the main outcomes.

	1998N = 1.103	2004N = 503	2010N = 1.559	2016N = 1.128
<i>Organ dysfunction<sup>a</sup>, n (%)</i>				
Cardiovascular	356 (32)	180 (36)	680 (44)	556 (49)
Renal	225 (20)	104 (21)	339 (22)	173 (15)
Hepatic	58 (5)	27 (5)	35 (2)	22 (2)
Hematological	94 (8)	54 (11)	117 (7)	61 (5)
<i>Events occurring during mechanical ventilation, n (%)</i>				
Acute respiratory distress syndrome	62 (6)	81 (16)	87 (6)	48 (4)
Ventilator-associated pneumonia	101 (11)	6 (1)	27 (2)	32 (3)
Sepsis	130 (12)	50 (10)	258 (16)	168 (16)
<i>Outcomes</i>				
Duration of mechanical ventilation, median (P <sub>25</sub> ,P <sub>75</sub> ), days	5 (3.9)	7 (4.12)	5 (4.11)	5 (2.10)
ICU stay, median (P <sub>25</sub> ,P <sub>75</sub> ), days	9 (5.16)	9 (5.17)	8 (4.16)	8 (4.15)
Hospital stay <sup>b</sup> , median (P <sub>25</sub> ,P <sub>75</sub> ), days	21 (12.36)	20 (11.38)	20 (11.38)	19 (9.34)
ICU mortality, n (%)	362 (33)	170 (34)	420 (27)	306 (27)
Hospital mortality <sup>b</sup> , n (%)	443 (42)	199 (40)	530 (35)	386 (35)
Standardized mortality ratio (95%CI) <sup>c</sup>	1.17(0.81–1.52)	1.17(0.80–1.53)	0.88(0.59–1.18)	0.86(0.58–1.15)

<sup>a</sup> Defined as a SOFA score > 2, at least 2 consecutive days.

<sup>b</sup> Missing data in 131 patients.

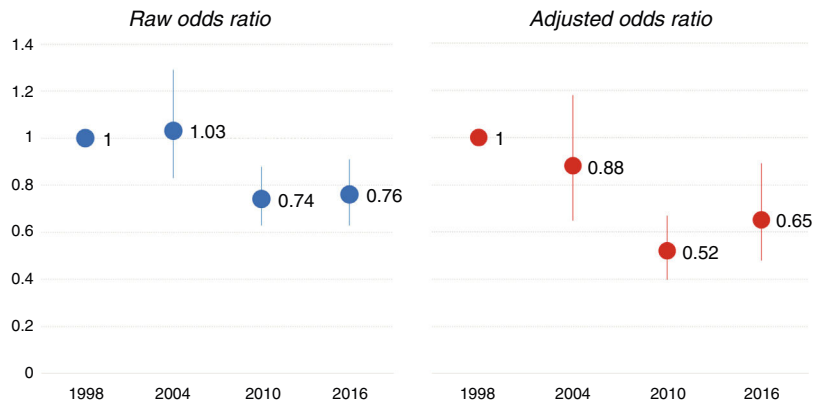
<sup>c</sup> Standardized mortality ratio = (Observed in-hospital mortality rate/Expected in-hospital mortality rate according to SAPS II).

with or without pressure support, to the point where it has now become a marginal mode.<sup>50</sup> On the other hand, as in other countries,<sup>51</sup> little use is made of more complex modes (proportional assist ventilation [PAV], neurally adjusted ventilatory assist [NAVA]) – possibly because these proportional modes are protected by manufacturing patent rights and are not available in all commercially available mechanical ventilators.

Probably the greatest change produced as a result of clinical research is the so-called lung protective ventilation strategy, characterized by ventilation with low tidal volume settings (<6 ml/kg ideal body weight) and high PEEP, with the aim of maintaining a plateau pressure <30

cmH<sub>2</sub>O.<sup>36</sup> This strategy, initially indicated for patients with ARDS,<sup>19,20</sup> has been extended to the general population of patients subjected to MV.<sup>27</sup> It gradually has been incorporated to routine clinical practice. Observational studies have recorded a progressive decrease from 8 and 10 ml/kg reported in the studies published in the closing years of the last century<sup>3,5,29</sup> to tidal volumes <8 ml/kg but >6 ml/kg, maintaining a plateau pressure at the safety limits in the most recent studies.<sup>38–40,42–45</sup> We observed a similar trend in our case. There has been a gradual decrease in tidal volume, though settings of <6 ml/kg are not reached probably because the current volumes secure the target plateau pressure < 30 cmH<sub>2</sub>O and/or driving pressure <15 cmH<sub>2</sub>O.<sup>52</sup> Fewer





**Figure 4** Odds ratio of mortality in the ICU over time, taking the first study as reference. The adjusted model included the following variables: year-study, age, gender, SAPS II score, reason for mechanical ventilation, variables related to evolution during mechanical ventilation (complications such as ARDS, sepsis, pneumonia and organ dysfunction), variables related to ventilatory support (use of noninvasive ventilation, protective ventilation strategy) and variables related to treatment (sedation, neuromuscular block).

changes are seen in PEEP level. In the implementation of this strategy we have also recorded differences between the different geographical regions.

The changes observed in the ventilation strategies (increased use of noninvasive ventilation and progressive implementation of protective ventilation) may have influenced the observed changes in patient mortality. A meta-analysis including individual data from patients participating in 9 randomized clinical trials has reported that a decrease in daily water balance, plateau pressure and tidal volume, and an increase in PEEP, reduced the mortality rate among patients with ARDS over a period of 17 years.<sup>53</sup> In a mediation analysis of the global patients included in the four international studies to which our own cohort belongs, we observed a moderate effect (< 25%) upon mortality on the part of the protective ventilation strategy in the subgroup of patients with PaO<sub>2</sub>/FiO<sub>2</sub> between 100–200.<sup>33</sup>

Our study has a number of limitations that may influence interpretation of the results. Although a significant number of ICUs participated in the study, they do not represent all such Units in Spain. Thus, although we do consider the participating Units to be highly representative, there may have been selection bias causing limitations in the drawing of conclusions. However, the changes observed in the 14 Units that participated in all four studies were similar.

In conclusion, over the last two decades there has been a significant decrease in mortality among ventilated patients in Spanish ICUs. These changes in turn may have been influenced by the increased use of ventilatory strategies designed to minimize ventilator-induced lung damage.

## Authorship

Oscar Peñuelas, Fernando Frutos-Vivar and Andrés Esteban, as coordinators of the four studies, had access to all the data of the studies and accept responsibility for their reliability.

*Study design:* Andrés Esteban, Fernando Frutos-Vivar, Oscar Peñuelas, Antonio Anzueto.

*Data compilation* (investigators in 3 or 4 studies): Antonio García-Jiménez, Raúl de Pablo, Manuel Valledor, Miquel

Ferrer, Miguel León, José María Quiroga, Susana Temprano, Inmaculada Vallverdú, Rafael Fernández, Federico Gordo.

*Statistical analysis:* Alfonso Muriel, Oscar Peñuelas, Fernando Frutos-Vivar.

*Data interpretation:* Alfonso Muriel, Oscar Peñuelas, Fernando Frutos-Vivar.

*Drafting of the manuscript:* Fernando Frutos-Vivar.

*Critical review of the manuscript:* Oscar Peñuelas, Fernando Frutos-Vivar, Alfonso Muriel, Jordi Mancebo, Antonio García-Jiménez, Raúl de Pablo, Manuel Valledor, Miquel Ferrer, Miguel León, José María Quiroga, Susana Temprano, Inmaculada Vallverdú, Rafael Fernández, Federico Gordo, Antonio Anzueto, Andrés Esteban.

*Final approval of the manuscript:* Oscar Peñuelas, Fernando Frutos-Vivar, Alfonso Muriel, Jordi Mancebo, Antonio García-Jiménez, Raúl de Pablo, Manuel Valledor, Miquel Ferrer, Miguel León, José María Quiroga, Susana Temprano, Inmaculada Vallverdú, Rafael Fernández, Federico Gordo, Antonio Anzueto, Andrés Esteban.

## Conflicts of interest

The authors declare that they have no conflicts of interest.

## Acknowledgements

Thanks are due to all the investigators indicated in Annex 1.

## Appendix A. Supplementary data

Supplementary material related to this article can be found, in the online version, at doi:<https://doi.org/10.1016/j.medine.2020.11.001>.

## References

1. Ibsen B. The anesthetist's viewpoint on the treatment of respiratory complications in poliomyelitis during the epidemic in Copenhagen, 1952. *Proc R Soc Med.* 1954;47:72–4.

2. Esteban A, Alía I, Ibañez J, Benito S, Tobin MJ. Modes of mechanical ventilation and weaning. A national survey of Spanish hospitals. *Chest*. 1994;106:1188–93.
3. Esteban A, Anzueto A, Alía I, Gordo F, Apezteguía C, Palizas F, et al. How is mechanical ventilation employed in the Intensive Care Unit? An international utilization review. *Am J Respir Crit Care Med*. 2000;161:1450–8.
4. Esteban A, Anzueto A, Frutos F, Alía I, Brochard L, Stewart TE, et al. Characteristics and outcomes in adult patients receiving mechanical ventilation. *JAMA*. 2002;287:345–55.
5. Karanson S, Antonsen K, Aneman A. Ventilator treatment in the Nordic countries. A multicenter survey. *Acta Anaesthesiol Scand*. 2002;46:1053–61.
6. Tomicic V, Espinoza M, Andresen M, Molina J, Calvo M, Ugarte H, et al. Características de los pacientes que reciben ventilación mecánica en unidades de cuidados intensivos: primer estudio multicéntrico chileno. *Rev Med Chil*. 2008;136:959–67.
7. Hong SB, Oh BJ, Kim YS, Kang EH, Kim CH, Park YB, et al. Characteristics of mechanical ventilation employed in intensive care units: a multicenter survey of hospitals. *J Korean Med Sci*. 2008;23:948–53.
8. Koh Y, Lim CM, Koh SO, Ahn JJ, Kim YS, Jung BH, et al. A national survey on the practice and outcomes of mechanical ventilation in Korean intensive care units. *Anaesth Intensive Care*. 2009;37:272–80.
9. Metnitz PG, Metnitz B, Moreno RP, Bauer P, Del Sorbo L, Hoermann C, et al. Epidemiology of mechanical ventilation: analysis of the SAPS 3 database. *Intensive Care Med*. 2009;35:816–25.
10. Wunsch H, Wagner J, Herlim M, Chong DH, Kramer AA, Halpern SD. ICU occupancy and mechanical ventilator use in the United States. *Crit Care Med*. 2013;41:2712–9.
11. Zilberberg MD, Luippold RS, Sulsky S, Shorr AF. Prolonged acute mechanical ventilation, hospital resource utilization, and mortality in the United States. *Crit Care Med*. 2008;36:724–30.
12. Needham DM, Bronskill SE, Sibbald WJ, Pronovost PJ, Laupacis A. Mechanical ventilation in Ontario, 1992–2000: incidence, survival, and hospital bed utilization of noncardiac surgery adult patients. *Crit Care Med*. 2004;32:1504–9.
13. Carson SS, Cox CE, Holmes GM, Calinawan JR, Howard A, Carey TS. The changing epidemiology of mechanical ventilation: a population-based study. *J Intensive Care Med*. 2006;26:173–82.
14. Zilberberg MD, Wit M, Pirone JR, Shor AF. Growth in adult prolonged acute mechanical ventilation: implications for health care delivery. *Crit Care Med*. 2008;36:1451–5.
15. Needham DM, Bronskill SE, Calinawan JR, Sibbald WJ, Pronovost PJ, Laupacis A. Projected incidence of mechanical ventilation in Ontario to 2026: preparing for the aging baby boomers. *Crit Care Med*. 2005;33:574–9.
16. Mehta AB, Syeda SN, Wiener RS, Walkey AJ. Epidemiological trends in invasive mechanical ventilation in the United States: a population-based study. *J Crit Care*. 2015;30:1217–21.
17. Alonso-Ovies Á, Nin N, Martín MC, Gordo F, Merino P, Añón JM, et al. Safety incidents in airway and mechanical ventilation in Spanish ICUs: the IVeMVastudy. *J Crit Care*. 2018;47:238–44.
18. Demoule A, Chevret S, Carlucci A, Kouatchet A, Jaber S, Meziani F, et al. Changing use of noninvasive ventilation in critically ill patients: trends over 15 years in francophone countries. *Intensive Care Med*. 2016;42:82–92.
19. Serpa Neto A, Cardoso SO, Manetta JA, Pereira VG, Espósito DC, Pasqualucci M, et al. Association between use of lung-protective ventilation with lower tidal volumes and clinical outcomes among patients without acute respiratory distress syndrome: a meta-analysis. *JAMA*. 2012;308:1651–9.
20. Petrucci N, De Feo C. Lung protective ventilation strategy for the acute respiratory distress syndrome. *Cochrane Database Syst Rev*. 2013:CD003844.
21. Gordo-Vidal F, Gómez-Tello V, Palencia-Herrejón E, Latour-Pérez J, Sánchez-Artola B, Díaz-Alersi R. PEEP alta vs. PEEP convencional en el síndrome de distrés respiratorio agudo: Revisión sistemática y meta-análisis. *Med Intensiva*. 2007;31:491–501.
22. Guérin C, Reigner J, Richard JC, Beuret P, Gacouin A, Boulain T, et al. Prone positioning in severe acute respiratory distress syndrome. *N Engl J Med*. 2013;368:2159–68.
23. Papazian L, Forel JM, Gacouin A, Penot-Ragon C, Perrin G, Loun-dou A, et al. Neuromuscular blockers in early acute respiratory distress syndrome. *N Engl J Med*. 2010;363:1107–16.
24. Shehabi Y, Bellomo R, Reade MC, Bailey M, Bass F, Howe B, et al. Early intensive care sedation predicts long-term mortality in ventilated critically ill patients. *Am J Respir Crit Care Med*. 2012;186:724–31.
25. Mehta S, Burry L, Cook D, Fergusson D, Steinberg M, Granton J, et al. Daily sedation interruption in mechanically ventilated critically ill patients cared for with a sedation protocol: a randomized controlled trial. *JAMA*. 2012;308:1985–92.
26. Girard TD, Kress JP, Fuchs BD, Thomason JW, Schweickert WD, Pun BT, et al. Efficacy and safety of a paired sedation and ventilator weaning protocol for mechanically ventilated patients in intensive care (Awakening and Breathing Controlled trial): a randomised controlled trial. *Lancet*. 2008;371:126–34.
27. Writing Group for the PREVENT Investigators, Simonis FD, Serpa Neto A, Binnekade JM, Braber A, Bruin KCM, et al. Effect of a low vs intermediate tidal volume strategy on ventilator-free days in intensive care unit patients without ARDS: a randomized clinical trial. *JAMA*. 2018;320:1872–80.
28. Peñuelas O. Análisis de la mortalidad de los pacientes críticos con necesidad de ventilación mecánica [Tesis doctoral]. Universidad Autónoma de Madrid; 2017. pp. 170.
29. Frutos F, Alía I, Lorenzo MR, García Pardo J, Nolla M, Ibañez J, et al. Utilización de la ventilación mecánica en 72 unidades de cuidados intensivos en España. *Med Intensiva*. 2003;27:1–12.
30. Frutos F, Alía I, Valverdú I, Revuelta P, Saura P, Besso GM, et al. Pronóstico de una cohorte de enfermos en ventilación mecánica en 72 unidades de cuidados intensivos en España. *Med Intensiva*. 2003;27:162–8.
31. Esteban A, Ferguson ND, Meade MO, Frutos-Vivar F, Apezteguía C, Brochard L, et al. Evolution of mechanical ventilation in response to clinical research: evolution of mechanical ventilation in response to clinical research. *Am J Respir Crit Care Med*. 2008;177:170–7.
32. Esteban A, Frutos-Vivar F, Muriel A, Ferguson ND, Peñuelas O, Abaira V, et al. Evolution of mortality over time in patients receiving mechanical ventilation. *Am J Respir Crit Care Med*. 2013;188:220–30.
33. Peñuelas O, Muriel A, Abaira V, Frutos-Vivar F, Mancebo J, Raymondos K, et al. Inter-country variability over the time in the mortality of mechanically ventilated patients. *Intensive Care Med*. 2020 [Epub ahead of print].
34. Von Elm E, Altman DG, Egger M, Pocock SJ, Gøtzsche PC, Vandenbroucke JP. Strengthening the Reporting of Observational Studies in Epidemiology (STROBE) statement: guidelines for reporting observational studies. *BMJ*. 2007;335:806–8.
35. Merlo J, Chaix B, Ohlsson H, Beckman A, Johnell K, Hjerpe P, et al. A brief conceptual tutorial of multilevel analysis in social epidemiology: using measures of clustering in multilevel logistic regression to investigate contextual phenomena. *J Epidemiol Community Health*. 2006;60:290–7.
36. Tobin MJ. Culmination of an era in research on the acute respiratory distress syndrome. *N Engl J Med*. 2000;342:1360–1.
37. Neto AS, Barbas CSV, Simonis FD, Artigas-Raventós A, Canet J, Determann RM, et al. Epidemiological characteristics, practice of ventilation, and clinical outcome in patients at risk of acute respiratory distress syndrome in intensive care units from 16 countries (PROVENT): an international, multicentre, prospective study. *Lancet Respir Med*. 2016;4:882–93.

38. Tomicic V, Espinosa M, Andersen M, Molina J, Calvo M, Ugarte H, et al. Características de los pacientes que reciben ventilación mecánica en unidades de cuidados intensivos: primer estudio multicéntrico chileno. *Rev Med Chil.* 2008;136:969–1067.
39. Azevedo LC, Park M, Salluh JI, Rea-Neto A, Souza-Dantas VC, Varaschin P, et al. Clinical outcomes of patients requiring ventilatory support in Brazilian intensive care units: a multicenter, prospective, cohort study. *Crit Care.* 2013;17:R63.
40. Kübler A, Maciejewski D, Adamik B, Kaczorowska M. Mechanical ventilation in ICUs in Poland: a multicenter point-prevalence study. *Med Sci Monit.* 2013;19:424–9.
41. Du B, An Y, Kang Y, Yu X, Zhao M, Ma X, et al. Characteristics of critically ill patients in ICUs in mainland China. *Crit Care Med.* 2013;41:84–92.
42. Van Ijzendoorn MC, Koopmans M, Strauch U, Heines S, den Boer S, Kirs BR, et al. Ventilator setting in ICUs: comparing a Dutch with a European cohort. *Neth J Med.* 2014;72:473–9.
43. Jeong BH, Suh GY, An JY, Park MS, Lee JH, Lee MG, et al. Clinical demographics and outcomes in mechanically ventilated patients in Korean intensive care units. *J Korean Med Sci.* 2014;29:864–70.
44. Fialkow L, Farenzena M, Wawrzeniak IC, Brauner JS, Vieira SR, Vigo A, et al. Mechanical ventilation in patients in the intensive care unit of a general university hospital in southern Brazil: an epidemiological study. *Clinics (Sao Paulo).* 2016;71:144–51.
45. Marín MC, Elizalde J, Villagómez A, Cerón U, Poblano M, Palma-Lara I, et al. ¿Se han producido cambios en la aplicación de la ventilación mecánica en relación con la evidencia científica? Estudio multicéntrico en México. *Med Intensiva.* 2019 [Epub ahead of print].
46. Nguyen YL, Perrodeau E, Guidot B, Trinquart L, Ridard JC, Mercal, et al. Mechanical ventilation and clinical practice heterogeneity in intensive care units: a multicenter case-vignett study. *Ann Intensive Care.* 2014;4:2.
47. Corrêa TD, Sanches PR, de Moraes LC, Scarin FC, Silva E, Barbas CS. Performance of noninvasive ventilation in acute respiratory failure in critically ill patients: a prospective, observational, cohort study. *BMC Pulm Med.* 2015;15:144.
48. García Iñiguez JP, Medina Villanueva A, Garnero Guglielmo A. Taxonomía o clasificación de los modos de ventilación mecánica. In: Gelbard Cecilia Hermosa, Ureña Sergio Fernández, Valbuena Beatriz Lobo, Álvarez Ana Abella, Villanueva Alberto Medina, Gordo Federico, editors. *Ventilación mecánica del paciente crítico.* tesela ediciones Las Palmas de Gran Canaria; 2019. p. 306–44.
49. Fichtner F, Moerer O, Weber-Carstens S, Nothacker M, Kaisers U, Laudi S. Clinical guideline for treating acute respiratory insufficiency with invasive ventilation and extracorporeal membrane oxygenation: evidence-based recommendations for choosing modes and setting parameters of mechanical ventilation. *Respiration.* 2019;98:357–72.
50. Kacmarek RM, Branson RD. Should intermittent mandatory ventilation be abolished? *Respir Care.* 2016;61:854–66.
51. Wenstedt EFE, De Bie Dekker AJR, Roos AN, Verberne JJM, Korsten HHM, Schultz MJ, et al. Current practice of closed-loop mechanical ventilation modes on intensive care units — a nationwide survey in the Netherlands. *Neth J Med.* 2017;75:145–50.
52. Amato MB, Meade MO, Slutsky AS, Brochard L, Costa EL, Schoenfeld DA, et al. Driving pressure and survival in the acute respiratory distress syndrome. *N Engl J Med.* 2015;372:747–55.
53. Zhang Z, Spieth PM, Chiumello D, Goyal H, Torres A, Laffey JG, et al. Declining mortality in patients with acute respiratory distress syndrome: an analysis of the acute respiratory distress syndrome network trials. *Crit Care Med.* 2019;47:315–23.