



IMAGES IN INTENSIVE MEDICINE

Penetrating or non-penetrating? Horn injury

[Herida por asta de toro: ¿trauma penetrante o contuso?]



Yelco Chicote Carasa*, Enrique Solano Lorente, Marcos Valiente Fernández

UCITE - UCI de Trauma y Emergencias, Servicio de Medicina Intensiva, Hospital Universitario 12 de Octubre, Madrid, Spain

Received 1 December 2023; accepted 9 December 2023

A 44-year-old male was admitted to the Intensive Care Unit (ICU) due to bullhorn trauma, with penetrating wounds in the right groin and popliteal fossa and a non-penetrating injury in the left flank region (Fig. 1). The computed tomography (CT) scan evidenced abdominal wall injury with bowel loop herniation (# in the figure) and grade V traumatic kidney injury (hilar avulsion) on the same side (asterisk). No open wound was observed in that zone – only skin bruising (Fig. 1).

In some cases, when the horn is not sufficiently sharp, injuries consistent with penetrating trauma are produced, though the skin remains intact because of its elasticity, producing what is known as a “sheathed goring” injury. The shaded area in the CT scan shows the trajectory of the horn injury, with the hernia being contained only by the skin.

The patient presented an Injury Severity Score (ISS) of 42 and required nephrectomy with herniorrhaphy. The subsequent course was uneventful.

DOI of original article: <https://doi.org/10.1016/j.medin.2023.12.004>

* Corresponding author.

E-mail address: yelcochicote@hotmail.com (Y.C. Carasa).

<https://doi.org/10.1016/j.medicine.2023.12.010>

2173-5727/© 2023 Elsevier España, S.L.U. and SEMICYUC. All rights reserved.

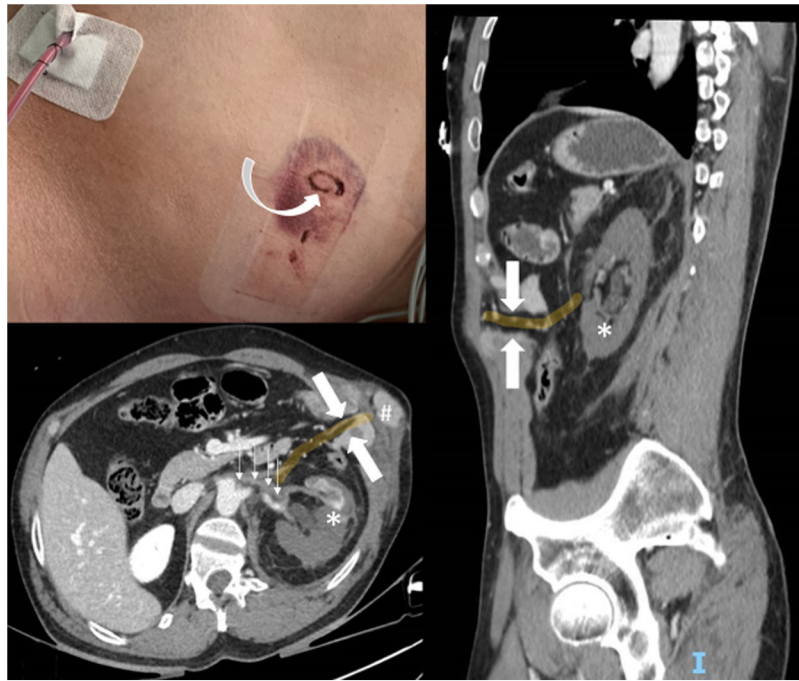


Figure 1

Funding

No funding was obtained for this article.

Authors' contributions

Yelco Chicote: Drafting of the manuscript and figure editing.
Enrique Solano: Data compilation.
Marcos Valiente: Figure editing and compilation. Supervision and corrections.

Conflict of interest

The authors declare that there was no conflict of interest.

Acknowledgements

Thanks are due to the Departments of Intensive Care Medicine and Radiology of