



medicina *intensiva*

<http://www.medintensiva.org/en/>



IMAGES IN INTENSIVE MEDICINE

Congenital absence of the circumflex coronary artery

Ausencia congénita de la arteria coronaria circunfleja

Antonio Padilla-Serrano^{a,*}, Carmen de la Cueva Coca^b, Antonio Cárdenas Cruz^c

^a Unidad de Cuidados Intensivos Cardiovasculares, Servicio de Medicina Intensiva, Hospital Universitario Virgen de las Nieves, Grupo de Investigación PAIDI, críticallab cts 609, Granada, Spain

^b Unidad de Cuidados Intensivos Cardiovasculares, Servicio de Medicina Intensiva, Hospital Universitario Virgen de las Nieves, Granada, Spain

^c Unidad de Cuidados Intensivos Cardiovasculares, Servicio de Medicina Intensiva, Hospital Universitario Virgen de las Nieves, Profesor de Medicina, Universidad de Granada, Grupo de Investigación PAIDI, críticallab cts 609, Granada, Spain

Received 29 September 2024; accepted 10 November 2024

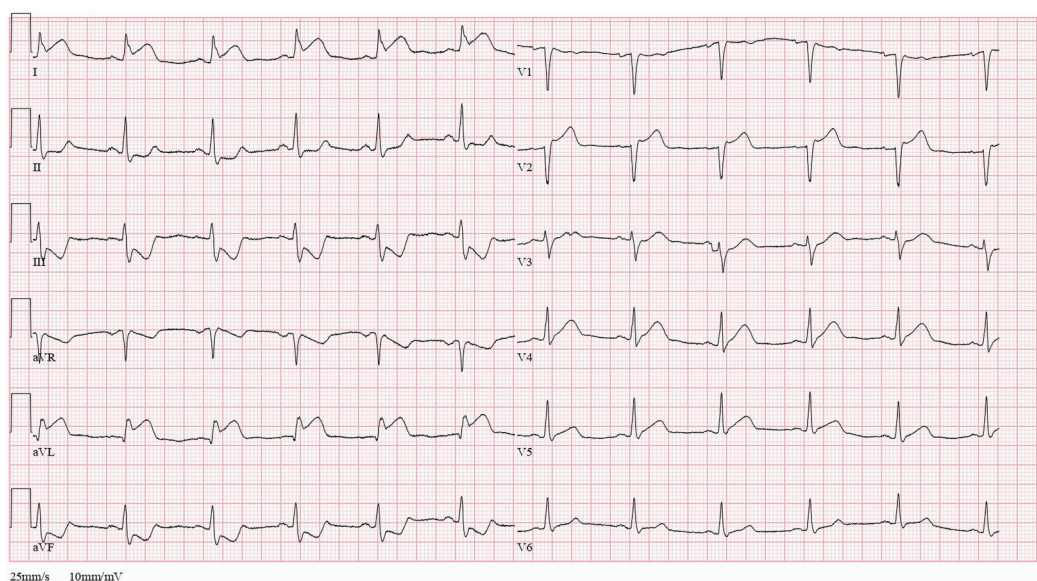


Figure 1

DOI of original article: <https://doi.org/10.1016/j.medin.2025.502152>

* Corresponding author.

E-mail addresses: antoniopadillaserrano@yahoo.es (A. Padilla-Serrano), Carmendelacuev@gmail.com (C. de la Cueva Coca), cardenascruz@ugr.es (A. Cárdenas Cruz).

<https://doi.org/10.1016/j.medicine.2025.502152>

2173-5727/© 2025 Elsevier España, S.L.U. and SEMICYUC. All rights are reserved, including those for text and data mining, AI training, and similar technologies.

Please cite this article as: A. Padilla-Serrano, C. de la Cueva Coca and A. Cárdenas Cruz, Congenital absence of the circumflex coronary artery, Medicina Intensiva, <https://doi.org/10.1016/j.medicine.2025.502152>

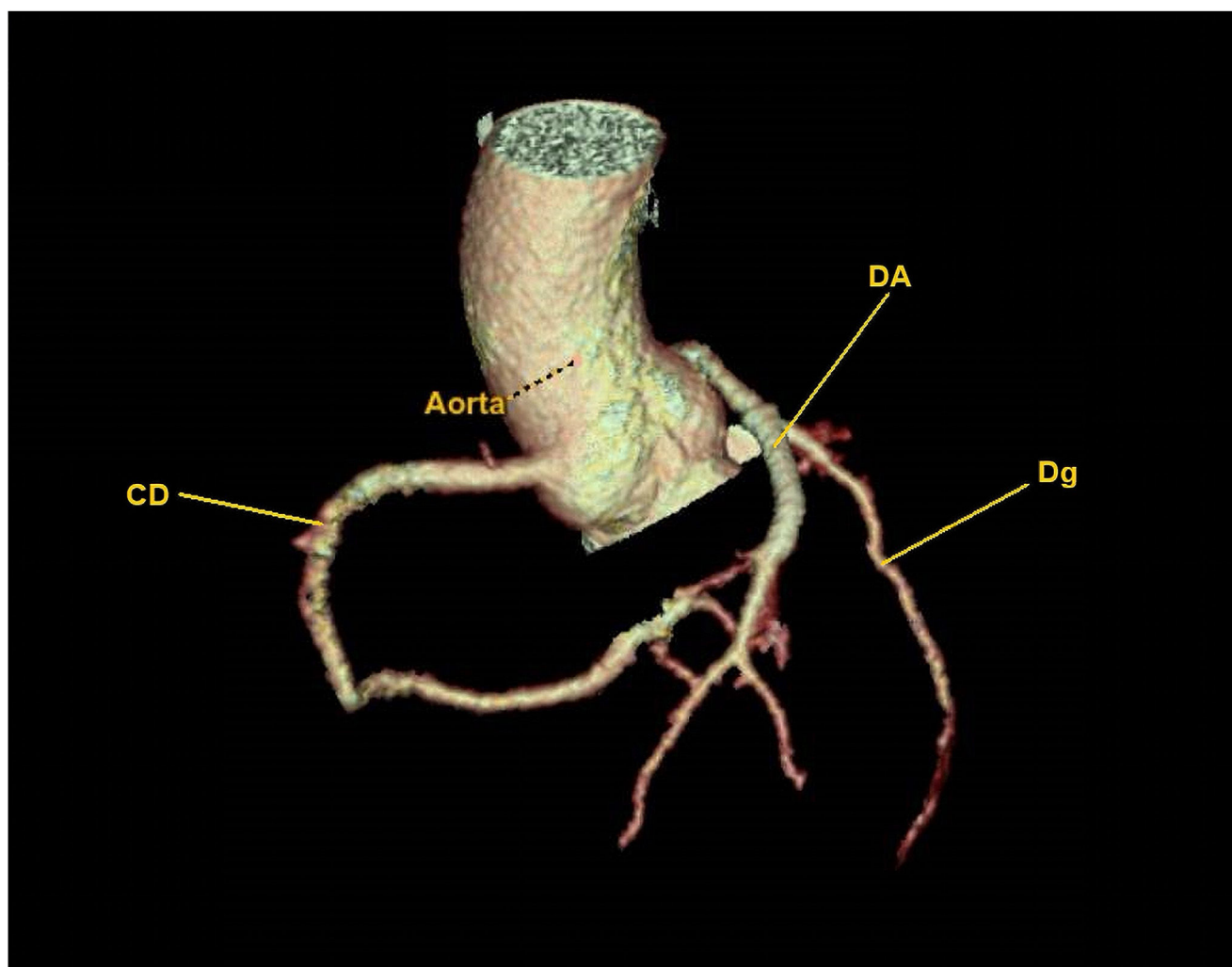


Figure 2

A woman consulted due to chest pain. The electrocardiogram (Fig. 1) was compatible with ST-segment elevation acute coronary syndrome. Urgent coronary angiography was performed, showing a right coronary artery (RC) without lesions, and an anterior descending coronary artery (AD) with abundant thrombotic material, encompassing the root of a large diagonal branch (Dg) with small branches that irrigate the territory of a theoretical circumflex coronary artery (Cx) that could not be visualized. The coronary artery lesions were revascularized. Subsequently, coronary computed tomography angiography (Fig. 2) confirmed congenital absence of the Cx. The patient developed cardiogenic shock due to the large ischemic area.

CRedit authorship contribution statement

All authors have contributed equally to the conception, drafting and final approval of the scientific communication.

Ethical considerations

The instructions for authors and ethical responsibilities have been taken into account. Likewise, the protocols and procedures of the hospital center regarding the publication of patient data, as well as the privacy of the subject, have been followed.

Financial support

The authors declare that they have not received financial support.

Declaration of competing interest

None.