



## IMAGES IN INTENSIVE MEDICINE

### Alveolar hemorrhage due to cardiac massage

### Hemorragia alveolar tras resucitación cardiopulmonar



Á. Vidal\*, N. Arias, J.A. Rubio

Adjuntos de la Unidad de Cuidados Intensivos del Hospital Universitario Fundación Jiménez Díaz de Madrid, Spain

Available online 15 May 2019

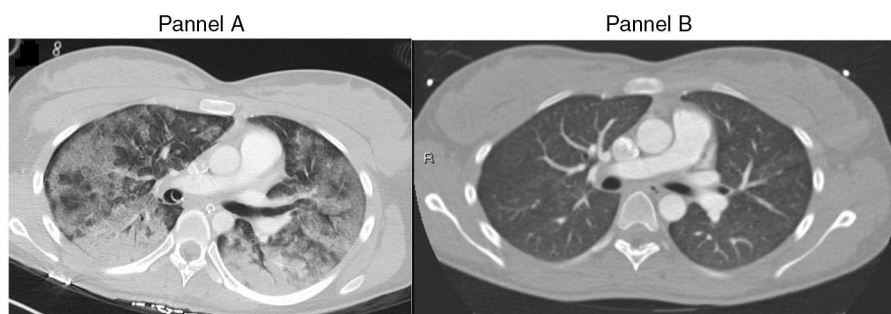


Figure 1

A 20-year-old woman without any past medical issues suffered cardio-respiratory arrest in the street. Resuscitation maneuvers were performed for 40 min, regaining normal cardiac function. During resuscitation, the patient was intubated using direct laryngoscopy, and airway was clear and unobstructed. Ten minutes after the intubation, however, a large quantity of foamy, serohemorrhagic fluid emerged from the endotracheal tube.

A CT scan was obtained immediately after arrival to the hospital, showing areas of ground-glass opacification and bilateral alveolar infiltrates (Fig. 1A). Given the results, urgent fibrobronchoscopy was performed, revealing bilateral alveolar hemorrhage in pulmonary bases, whilst the bronchial tree was clear. Autoimmune studies were negative. The patient showed good oxygenation and CO<sub>2</sub> exchange. Twelve days after the cardio-respiratory arrest, a coronary angio-CT was obtained, which ruled out coronary disease as a cause for the arrest. The patient was subsequently diagnosed with wide QT syndrome. In the coronary angio-CT scan, pulmonary parenchyma was normal, with no signs of active hemorrhage or residual blood (Fig. 1B). In the light of these findings, the alveolar hemorrhage was attributed to the cardiac massage received during the cardio-respiratory arrest.

\* Corresponding author.

E-mail address: [anxelavidal@gmail.com](mailto:anxelavidal@gmail.com) (Á. Vidal).