



IMAGES IN INTENSIVE MEDICINE

Tracheal deviation due to hematoma after central venous catheter placement

Desviación traqueal secundaria a hematoma tras colocación de vía central

Á. Vidal*, P. Turrión, J.M. Milicua

Médicos Intensivistas de la UVI de la Fundación Jiménez Díaz de Madrid, Spain

Available online 24 July 2019



Figure 1

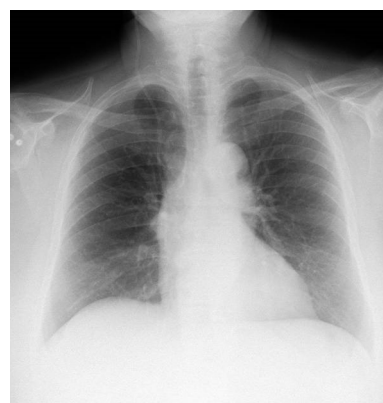


Figure 2

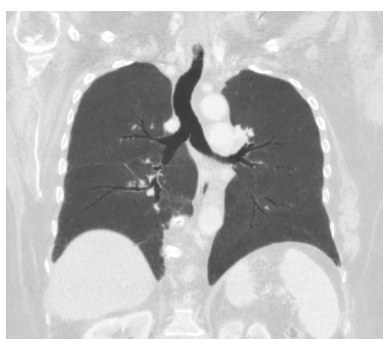


Figure 3

A 72-year-old woman was admitted to our hospital for a scheduled gallbladder carcinoma surgery. A four-lumen central line was placed in the left internal jugular vein with ultrasound-guided technique in the operating theater without incidences.

A postoperative chest X-ray was taken at ICU admission (Fig. 1), which revealed a marked right-displacement of the trachea and an increased density area in the mediastinum, which was identified as a hematoma caused by the catheter placement. None of these findings were present in the preoperative chest X-ray (Fig. 2). A computed tomography and thoracic angiography (Fig. 3) were performed and neither active bleeding nor airway compromise was found. The catheter was removed without complications. One week later chest X-ray showed no alterations.

* Corresponding author.

E-mail address: anxelavidal@gmail.com (Á. Vidal).

<https://doi.org/10.1016/j.medin.2019.05.005>

0210-5691/© 2019 Elsevier España, S.L.U. y SEMICYUC. All rights reserved.