



ORIGINAL ARTICLE

Neurological outcome and modifiable events after out-of-hospital cardiac arrest in patients managed in a tertiary cardiac centre: A ten years register



T. Cassina^{a,*}, S. Clivio^a, A. Putzu^a, M. Villa^a, T. Moccetti^b, D. Fortuna^c, G. Casso^a

^a Department of Cardiac Anesthesia and Intensive Care, Cardiocentro Ticino, Via Tesserete 48, Lugano, Switzerland

^b Department of Cardiology, Cardiocentro Ticino, Via Tesserete 48, 6900 Lugano, Switzerland

^c Regional Agency for Health and Social Care, Emilia-Romagna Region, Bologna, Italy

Received 19 June 2018; accepted 18 May 2019

KEYWORDS

Out-of-hospital cardiac arrest;
Cardiac arrest;
Return of spontaneous circulation;
Mortality;
Neurological outcome

Abstract

Objective: A study was made of the events occurring in the early post-resuscitation phase that may help to improve the outcomes at hospital discharge.

Design: A retrospective cohort study (2007–2017) of a prospective Utstein type registry database was carried using multivariate logistic regression analysis. Pre- and post-hospital admission events were investigated.

Setting: A tertiary cardiac centre.

Participants: Unconscious victims of out-of-hospital cardiac arrest (OHCA) with documented ventricular tachycardia or fibrillation.

Main variables of interest: Events occurring before and within 72 h after intensive care unit (ICU) admission were recorded. The variables were analyzed to determine their impact on hospital survival and poor neurological outcome. One-year follow-up survival was also considered. Results are presented as odds ratio (OR) and 95% confidence interval (95%CI).

Results: Of 245 patients admitted to our ICU after OHCA, 152 (62%) were alive and 131 (86.2%) presented good neurological outcomes (cerebral performance categories ≤ 2) at hospital discharge. The one-year follow-up survival rate was 95.9%. Age >70 years (OR 2.0; 95%CI 1.1–4.1), previous myocardial infarction (OR 2.7; 95%CI 1.2–6.1), shock upon hospital admission (OR 2.9; 95%CI 1.3–6.2), time from call to return of spontaneous circulation (ROSC) >25 min (OR 3.1; 95%CI 1.6–6.0) and anticonvulsant therapy (OR 18.2; 95%CI 5.5–60) were independent predictors of poor neurological outcome. Immediate admission to the cardiac centre (OR 0.5; 95%CI 0.3–0.9) and lactate clearance reaching plasma levels <2.5 mmol/l at 12 h (OR 0.4; 95%CI 0.2–0.8) were associated with better outcomes.

* Corresponding author.

E-mail address: tiziano.cassina@cardiocentro.org (T. Cassina).

PALABRAS CLAVE

Parada cardíaca extrahospitalaria;
Parada cardíaca;
Regreso a la circulación espontánea;
Mortalidad;
Desenlace neurológico

Conclusions: Unconscious OHCA patients with documented ventricular tachycardia or fibrillation may benefit from direct admission to a reference cardiac centre. Initial haemodynamic support, urgent coronary angiography and targeted management in the cardiac ICU seem to increase the likelihood of good neurological outcomes.

© 2019 Elsevier España, S.L.U. y SEMICYUC. All rights reserved.

Desenlaces neurológicos y acontecimientos modificables tras parada cardíaca extrahospitalaria en pacientes tratados en un centro de atención cardíaca terciaria: registro de 10 años

Resumen

Objetivo: Llevar a cabo un estudio de los acontecimientos ocurridos en la fase inmediatamente posterior a la reanimación que puedan ayudar a mejorar los desenlaces en el momento del alta hospitalaria.

Diseño: Se realizó un estudio retrospectivo (2007-2017) de cohorte de una base de datos de registro de tipo Utstein prospectivo mediante un análisis de regresión logística multivariable. Se investigaron los acontecimientos previos y posteriores al ingreso hospitalario.

Ámbito: Un centro de atención cardíaca terciaria.

Participantes: Víctimas inconscientes de parada cardíaca extrahospitalaria (OHCA) con fibrilación o taquicardia ventricular documentada.

Variables principales de interés: Se registraron los acontecimientos ocurridos antes y durante las 72 h posteriores al ingreso en la unidad de cuidados intensivos (UCI). Se analizaron las variables para determinar su impacto en la supervivencia hospitalaria y los malos desenlaces neurológicos. También se tuvo en consideración la supervivencia en el seguimiento a lo largo de un año. Los resultados se presentan con valores de oportunidad relativa (OR) e intervalo de confianza del 95% (IC del 95%).

Resultados: De los 245 pacientes ingresados en nuestra UCI tras una OHCA, 152 (62%) seguían vivos y 131 (86,2%) presentaban unos buenos desenlaces neurológicos (categorías de rendimiento cerebral ≤ 2) en el momento del alta hospitalaria. La tasa de supervivencia en el seguimiento a lo largo de un año fue del 95,9%. La edad > 70 años (OR: 2,0; IC del 95%: 1,1-4,1), los antecedentes de infarto de miocardio (OR: 2,7; IC del 95%: 1,2-6,1), el choque en el momento del ingreso hospitalario (OR: 2,9; IC del 95%: 1,3-6,2), el tiempo transcurrido entre la llamada y el regreso a la circulación espontánea (ROSC) > 25 min (OR: 3,1; IC del 95%: 1,6-6,0) y la administración de tratamiento anticonvulsivo (OR: 18,2; IC del 95%: 5,5-60) fueron factores predictivos independientes de un mal desenlace neurológico. El ingreso inmediato en un centro de cuidados cardíacos (OR: 0,5; IC del 95%: 0,3-0,9) y el hecho de que el aclaramiento de lactato alcanzase unos niveles plasmáticos < 2,5 mmol/l al cabo de 12 h (OR: 0,4; IC del 95%: 0,2-0,8) se asociaron con unos mejores desenlaces.

Conclusiones: Los pacientes inconscientes tras OHCA y con fibrilación o taquicardia ventricular documentada podrían beneficiarse del ingreso directo en un centro cardíaco de referencia. El apoyo hemodinámico inicial, la angiografía coronaria urgente y el tratamiento dirigido en la UCI cardíaca parecen aumentar la probabilidad de obtener unos buenos desenlaces neurológicos.

© 2019 Elsevier España, S.L.U. y SEMICYUC. Todos los derechos reservados.

Introduction

Out-of-hospital cardiac arrest (OHCA) is a sudden disease presentation where survival is tightly related to the rapid intervention delivered through an optimal teamwork. This represents the "chain of survival" concept based on prompt recognition of the cardiac arrest, call for help, bystander cardiopulmonary resuscitation (CPR), early defibrillation and standardized post-resuscitation care.¹⁻⁶ The implementation of a regional lay rescue programme focused

on a rapid coordinated network response⁷ and easy access to automatic external defibrillator (AED)⁸ improve OHCA survival.⁹ The aim is the return of spontaneous circulation (ROSC) in the first minutes following cardiac arrest (CA). In Canton Ticino, a region of Switzerland of about 350,000 inhabitants, most patients suffering from a cardiac-related OHCA are managed in a tertiary cardiac receiver centre in which an interdisciplinary team composed by cardiologists, anaesthesiologists, and intensivists is available on 24h/7 days basis. Since myocardial ischaemia is the predominant

aetiology of OHCA,¹⁰ early coronary revascularisation restores myocardial perfusion and improves patient outcome.^{11–13} In fact, numerous observational studies have shown that patients with ST-segment elevation after OHCA benefit of urgent angiography and primary percutaneous transluminal coronary angioplasty (PTCA).^{14–16} Once the heart is re-perfused, the therapeutic pathway continues with the post resuscitation management in the intensive care unit (ICU). The mitigation of cerebral ischaemia–reperfusion injuries by temperature control has proven to play a role in post-OHCA neuroprotection.^{17–19} Other supportive strategies include optimal organ perfusion monitored by close lactate analysis,^{20,21} plasma glucose optimization,²² prompt correction of electrolyte imbalance, and appropriate mechanical ventilation.²³ This multi-faceted ICU standardized post-cardiac arrest syndrome management combined with a well-organized extra-hospital rescue programmes have improved the survival after OHCA.^{9,24–26} Furthermore, some evidence suggests that patients treated in a specialized cardiac arrest centre may benefit of a better outcome.^{11,27–32} Therefore, a comprehensive post-cardiac arrest approach remains a pivotal step of the chain of survival, as highlighted in the last update of the 2015 ILCOR guidelines and in recent publications.^{1,33–37} We herewith report the data of our ten years register, collected prospectively in a cohort of post-OHCA patients admitted to our cardiovascular ICU. We analyzed independent risk factors that could have influenced patient's cerebral performance at hospital discharge after CA due to ventricular fibrillation (VF) or tachycardia (VT). The aim of the present study was to investigate survival and cerebral performance categories (CPC) in comatose patients after OHCA. Primary goal was to study the association between neurological outcome and clinical events occurring before ICU admission and during ICU stay.

Patients and methods

Data source

We conducted an observational cohort study based on a single centre OHCA register between 2007 and 2017. Prospective data collection was performed according to definitions and reporting templates described in Utstein's style recommendations for research.³⁸ All the data were recorded in our electronic institutional CA database. Additional sources of information were rescue medical reports, emergency department chart and hospital records. We included in our registry all victims of OHCA admitted to Cardiocentro Ticino, Lugano, Switzerland. The local Ethical Committee (Comitato etico Canton Ticino, Switzerland) reviewed and approved this study (ID 3218, BASEC 2017-00681). Waiver of consent was allowed using an encoded anonymous database, according to Swiss Human Research Act art.34/HRO.

Study population

Consecutive patients who underwent cardiopulmonary resuscitation (CPR) due cardiac-related OHCA with a

shockable rhythm and persistent Glasgow Coma Score <8 after ROSC and age ≥ 18 years. Exclusion criteria were: early neurological recovery before admission; non-shockable rhythm as pulseless electrical activity (PEA) or asystolia as first electrocardiographic finding; secondary OHCA of non-cardiac origin

Patient management

In our region rescue help calls are transmitted to a single regional emergency dispatcher call centre, which dispatch the first aid instructions for witnesses, alert the first responders, and active emergency medical service (EMS). Depending on the presumed aetiology, the clinical condition, and the location of OHCA, the victims could be transported either to a tertiary-care specialized cardiac arrest centre or to the nearest local hospital. If on site a cardiac origin is suspected, paramedics transmit 12-lead electrocardiogram via mobile phone application to the attending cardiologist of our centre. Whenever an ECG consistent with potential acute coronary syndrome is detected (ST-segment elevation myocardial infarction (STEMI), new left bundle branch block or N-STEMI) the local hospital could be bypassed and a dedicated emergency team (cardiologist, anaesthetist, and non-medical staff) is alerted and the OHCA patients are directly admitted to our cardiac centre. In case of questionable ECG or a suspicion of non-cardiac origin the patient is transported to the nearest local hospital emergency department (ED) for investigation and transferred secondarily to the catheterisation laboratory if needed.

Once the cardiac procedure was concluded, a transfemoral endovascular cooling catheter for targeted temperature control was placed in the inferior vena cava and the patient then transferred to the ICU. A standardized goal-directed strategy targeting a mean arterial pressure >65 mmHg, monitoring of lactate clearance, and urine output >0.5 ml/kg/h was pursued. The haemodynamic management included pharmacologic (e.g. continuous i.v. infusion of dobutamine or epinephrine as inotropes, with or without norepinephrine, as vasopressor) or mechanical (e.g.; intra-aortic balloon pump) haemodynamic support, as clinically judged appropriate according to current state-of-the art evidence. Haemodynamic monitoring was conducted with invasive arterial pressure, echocardiography, and in case of pronounced instability, with pulmonary artery catheter or with pulse-contour technique-based devices. Active target temperature body temperature control was promptly initiated at ICU admission with the COOLGARD™ device through the previously placed endovascular catheters. Therapeutic hypothermia entailed a rapid cooling phase favoured also by external ice packs. Shivering was controlled according to a standardized protocol. A target core temperature of 33°C for 24 h (measured with a bladder probe) was obtained, followed by a rewarming phase at a speed of 0.2°C/h until 36°C. Strict core temperature control (<37.5°C) was maintained for all patients during the following 72 h by means of the intravascular device, as well as acetaminophen.

Events investigated

Our analysis of potential contributors to the final outcome of resuscitated OHCA patients focused on events occurred

during two distinct time frames: (A) before ICU admission; (B) within 72 h after ICU admission.

Predisposing factors included patient pre-existing features and events occurred before ICU admission (before ICU): (i) patient's co-morbidities; (ii) resuscitation dynamics: witnessed arrest, first responder dispatch, use of first basic life support (BLS), AED shocks delivered by proximal layperson plus number of total of defibrillation performed, location of the CA, and time from call to ROSC. (iii) post-resuscitation factors: cardiogenic shock at hospital admission (defined as arterial systolic blood pressure <90 mmHg lasting at least 30 min despite pharmacological or mechanical support),³⁹ acute myocardial infarction at admission, immediate admission to a tertiary centre, emergent coronary angiography, need of percutaneous coronary intervention (PCI), and extracorporeal membrane oxygenation (ECMO) support.

The aggravating factors included events occurring during the first 72 h of ICU management (in-ICU): (i) pharmacological treatments: vasoactive and inotropic agents, sedatives, neuromuscular blocking agents and antiepileptic drugs; (ii) metabolic derangements: hyperglycaemia (>10 mmol/l lasting >4 h), or hypoglycaemia (<4 mmol/l)⁴⁰; electrolyte imbalances such as hypokalaemia <3.5 mmol/l and hypophosphataemia <0.8 mmol/l, aberrant arterial gas concentration: hypocapnia ($\text{PaCO}_2 \leq 30$ mmHg), hypercapnia ($\text{PaCO}_2 \geq 50$ mmHg) at alpha-stat management,⁴¹ and hypoxia ($\text{PaO}_2 \leq 80$ mmHg); (iii) haemodynamic variables: hypotension (MAP <60 mmHg over 10 min), bradycardia (heart rate <40 beats/min), and tachycardia (heart rate >130 beats/min); optimal lactate clearance (decreasing trend of serum lactate reaching a value ≤ 2.5 mmol/l in 12 ± 2 h after ICU admission).⁴² The following complications encountered during the whole ICU stay were also reported: (i) haemorrhagic events (>2 blood concentrates needed for Hb <8.0 g/l or intra-cranial bleeding); (ii) pneumonia (new or progressive consolidation on the radiograph, fever, leucocytosis, and the presence of purulent tracheo-bronchial secretions)³⁸; (iii) acute renal failure (RIFLE class F)⁴³ and the need of renal replacement therapy; (iv) manifest myoclonus activity or electroencephalography (EEG) epileptiform electroencephalography (EEG) pattern, requiring the use of anticonvulsants therapy.

Outcome measures

Final outcome was evaluated at hospital discharge with 5-tiered cerebral performance categories (CPC) scale, assessing neurological disability after cardiac arrest: CPC 1: conscious, alert, able to work, might have mild neurologic or psychological deficit; CPC 2: conscious, sufficient cerebral function to carry out daily life activities in an independent fashion; able to work in a protected environment; CPC 3: severe cerebral disability conscious; dependent on others for daily life because of an impaired brain function; CPC 4: Coma or unawareness, even if the patient appears in an awake vegetative state without interaction with the environment; CPC 5: death during anytime of ICU or hospital stay.^{44–46} We reported cause of death and we performed a one-year survival follow-up.

Statistical analysis

Continuous variables were expressed as mean \pm standard deviation (SD) and statistical significance of differences was estimated through Mann–Whitney test. All variables (before ICU and in-ICU) were analyzed to determine whether any single factor influenced poor neurological outcome (CPC >2) at hospital discharge. The association was expressed as odds ratio (OR) with 95% confidence interval (CI), and Mantel–Haenszel test for categorical variables was used considering a *p*-value less than 0.05 as significant. Pre-ICU and ICU risk factors were analyzed separately for each group of variables, the independent predictors of CPC >2 at discharge were estimated using a stepwise multivariable logistic regression. The independent risk factors of the two groups were also run together in a further stepwise multivariable logistic regression. The probability of developing poor neurological outcome at discharge was calculated and interpreted based on a cut-off of 0.50. The performance of the models was assessed through receiver operating characteristics (ROCs) and area under the ROC curve (AUC) was estimated as measure of discriminative ability of the models. Goodness-of-fit statistics for calibration of the models were evaluated through Hosmer–Lemeshow test. Furthermore, Nagelkerke R-square was calculated in order to estimate the proportion of the total variability explained by the models. A Cochran–Armitage test of trend was used to determine whether a linear trend exists between the years and the proportion of patients with poor neurological outcome (CPC >2). Statistical analysis was performed using SAS 9.3 and SPSS 20.0 software.

Results

Three-hundred fifty-four consecutive OHCA adult patients were admitted between 2007 and 2017 to our ICU. We enrolled 276 cases with documented sustained VT or VF as an initial resuscitation rhythm. Thirty-one patients were excluded being already conscious at the ICU admission. Two-hundred forty-five comatose patients were finally included for the analysis. The study flow diagram is showed in Fig. 1.

The average age of the cohort studied was 63.5 ± 13.1 years with a predominance of men (84.5%); demographic features and previous cardiovascular conditions are described in Table 1. The laps from call to EMS crew arrival on OHCA scene was 8.7 ± 4.2 min in good outcome group versus 9.0 ± 4.6 min in poor outcome group, without statistically difference (*p*=0.66). OHCA was witnessed in 222 patients (90.6%); first responders arrived on place before EMS in 77 cases (31.4%). AED was applied by bystander in 65 (26.5%) patients, while 180 received the first shock at EMS arrival. Overall number of pre-hospital defibrillations for successful ROSC was similar in the two group, 4.1 ± 3.2 in good outcome patients and 3.7 ± 2.3 in poor outcome patients (*p*=0.61). In-ICU all patients received at least one vasoactive or inotropic drug during the first 72 h. Ischaemia was the leading cause of the cardiac arrest, in fact among 245 patients 170 (69.4) were admitted with suspected diagnosis of acute myocardial infarction (Table 1), whereas in 67 (27.5) patients a culprit lesion was not visible and in

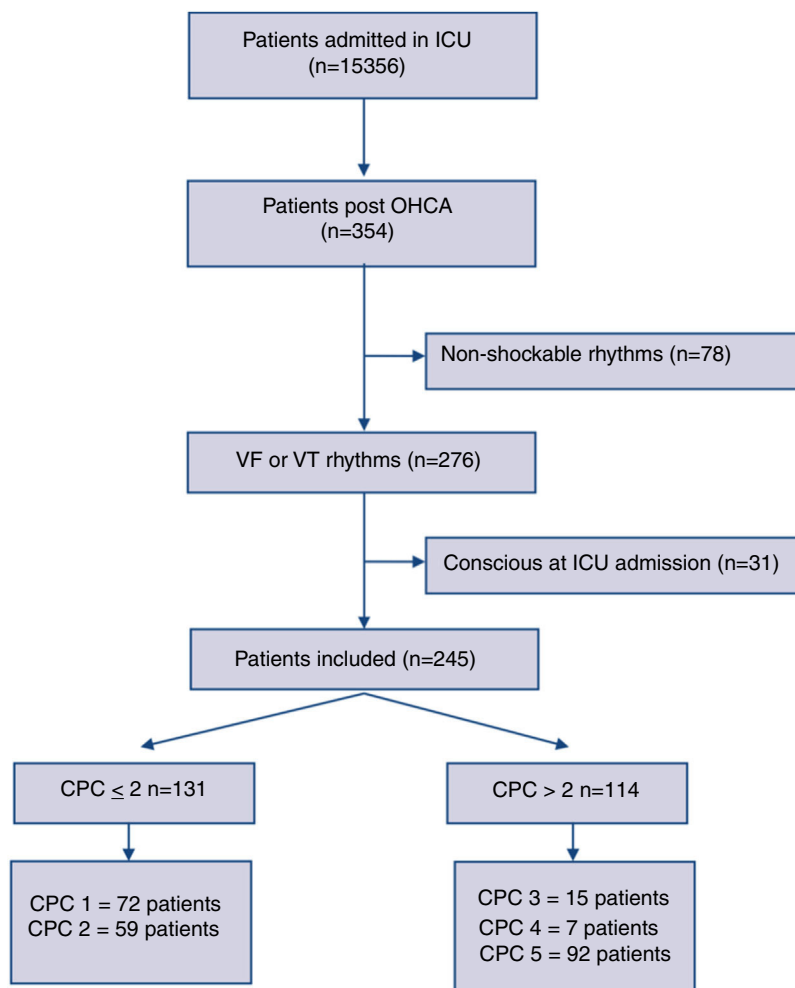


Figure 1 Flow diagram of study registry.

8 (3.2%) the cardiac origin was excluded (six documented hypokalaemia, one pulmonary embolism, one toxic).

One-hundred fifty-two patients (62%) survived at hospital discharge, 131 (86.2%) of them with favourable neurological outcome (CPC ≤ 2). The cause of death was circulatory failure 17.2%,¹⁶ neurological injury 67.7%,⁴⁷ multi-organ failure 15.1%.¹⁴ Among patients with good neurologic outcome one-year survival rate was 95.9% (117 alive at 1-year, 9 missed, 5 deceased). ICU length of stay (LOS) was respectively 6.4 ± 5.8 days for a good and 5.9 ± 6.7 days for a poor neurologic outcome ($p = 0.21$). Among patients with CPC 1 or 2, the time to the first signs of neurologic recovery was 75 ± 60 h after admission (time of "awakening" defined as the best motor response with Glasgow Coma Scale = 6).

The patients directly admitted to the tertiary centre had shorter time of access to the catheter laboratory, in comparison to those previously admitted to other hospitals; the time lapsed from ROSC to the beginning of coronary procedure was 67 ± 29 min vs 188 ± 52 min ($p < 0.01$), nevertheless the lapse was not associated with the outcome ($p = 0.06$). Moreover, this group of patients had earlier target temperature management, since time from ROSC to the activation of the intravascular cooling device was shorter (197 ± 55 min vs 220 ± 67 min, $p = 0.04$).

All variables (before ICU and in-ICU) related to the primary outcome with a statistically significant value ($p < 0.05$) (Tables 1 and 2), were run in the finally multivariable analysis (Table 3). The final stepwise multivariable logistic regression showed that an age >70 years old (OR 2.0; 95%CI 1.1–4.1), previous myocardial infarction (OR 2.7; 95%CI 1.2–6.1), shock at hospital admission (OR 2.9; 95%CI 1.3–6.2), time from call to ROSC >25 min (OR 3.1; 95%CI 1.6–6.0), and anticonvulsant therapy (OR 18.2; 95%CI 5.5–60) were independent predictors of poor neurologic outcome. Direct admission to the cardiac arrest centre (OR 0.5; 95%CI 0.3–0.9) and positive lactate clearance reaching lactate plasma level <2.5 mmol/l at 12 h (OR 0.4; 95%CI 0.2–0.8), were independent predictors of a more favourable outcome.

The performance of the models to predict poor neurologic outcome was assessed (Fig. 2). The model considering pre-ICU factors (green dashed line) explained 34.4% of the variance in CPC and correctly classified 71.8% of cases, whereas the model including ICU factors (red dotted curve) explained 34.6% of the variance in CPC, and correctly classified 74.7% of cases. The robustness of the predictive model increased when pre-ICU and ICU variables, from above mentioned analyses, were considered in a combined model (blue

Table 1 Clinical events before intensive care unit admission in relation to poor neurologic outcome, CPC >2.

Variables	All (N=245)	CPC ≤ 2 (N=131)	CPC > 2 (N=114)	Univariate analyses		Multivariable analyses	
	N (%)	N (%)	N (%)	OR (95%CI)	p-Value	OR (95%CI)	p-Value
<i>Pre-arrest patients characteristics</i>							
Gender, female	38 (15.5)	15 (11.5)	23 (20.2)	1.9 (0.9–3.9)	0.063		
Age >70 years	79 (32.2)	32 (24.4)	47 (41.2)	2.2 (1.2–3.7)	0.005	2.03 (1.08–3.81)	0.028
Previously healthy	71 (29.0)	40 (30.5)	31 (27.2)	0.8 (0.5–1.5)	0.565		
Previous myocardial infarction	51 (20.8)	16 (12.2)	35 (30.7)	3.2 (1.6–6.1)	0.001	2.36 (1.09–5.10)	0.029
Hypertension	103 (42.0)	50 (38.2)	53 (46.5)	1.4 (0.8–2.3)	0.169		
Diabetes mellitus	41 (16.7)	13 (9.9)	28 (24.6)	2.9 (1.4–6.0)	0.003	2.11 (0.86–5.18)	0.102
Stroke	14 (5.7)	7 (5.3)	7 (6.1)	1.2 (0.4–3.4)	0.789		
Pulmonary disease	23 (9.4)	10 (7.6)	13 (11.4)	1.6 (0.7–3.7)	0.316		
Renal impairment	17 (6.9)	3 (2.3)	14 (12.3)	5.9 (1.7–21)	0.006	2.29 (0.50–10.09)	0.291
<i>Resuscitation factors</i>							
Witnessed arrest	222 (90.6)	124 (94.7)	98 (86.0)	0.3 (0.1–0.9)	0.025	0.40 (0.13–1.23)	0.111
Cardiac arrest in private home	130 (53.1)	70 (53.4)	60 (52.6)	1.0 (0.6–1.6)	0.900		
Bystander CPR	202 (82.4)	115 (87.8)	87 (76.3)	0.4 (0.2–0.9)	0.020	0.536 (0.24–1.18)	0.123
First responder	77 (31.4)	48 (36.6)	29 (25.4)	0.6 (0.3–1.0)	0.061		
AED shock delivered	65 (26.5)	41 (31.1)	24 (21.1)	0.6 (0.3–1.0)	0.071		
Time from call to ROSC >25 min	117 (47.8)	44 (33.6)	73 (64.0)	3.5 (2.1–6.0)	0.001	4.58 (2.48–8.45)	0.001
<i>Post-resuscitation factors</i>							
Direct admission in cardiac centre	122 (49.8)	73 (55.7)	49 (43.0)	0.6 (0.4–0.9)	0.047	0.53 (0.29–0.95)	0.039
Shock at hospital admission	58 (23.7)	19 (14.5)	39 (34.2)	3.1 (1.6–5.7)	0.001	3.10 (1.54–6.23)	0.001
Acute myocardial infarction	170 (69.4)	88 (67.2)	82 (71.9)	1.3 (0.7–2.2)	0.421		
Emergency coronary angiography	232 (94.7)	126 (96.2)	106 (93.0)	0.5 (0.2–1.7)	0.272		
Percutaneous coronary intervention	163 (66.5)	94 (71.8)	69 (60.5)	0.6 (0.4–1.1)	0.064		
ECMO	9 (3.7)	3 (2.3)	6 (5.3)	2.4 (0.6–9.7)	0.230		

CPC: cerebral performance category; AED: automated external defibrillator; ROSC: return of spontaneous circulation; CPR: cardiopulmonary resuscitation; ECMO: extracorporeal membrane oxygenation. Values are odds ratio (OR) with low and upper confidence limit at 95% in bracket.

Table 2 Clinical events during intensive care unit in relation to poor neurologic outcome, CPC >2.

Variables	All (N=245)			Univariate analyses		Multivariable analyses	
	N (%)	CPC ≤ 2 (N=131) N (%)	CPC > 2 (N=114) N (%)	OR (95%CI)	p-Value	OR (95%CI)	p-Value
<i>In-hospital events</i>							
Pneumonia	138 (56.3)	83 (63.4)	55 (48.2)	0.5 (0.3–0.9)	0.018	0.45 (0.2–0.8)	0.010
Sedatives drug midazolam	85 (34.7)	43 (32.8)	42 (36.8)	1.2 (0.7–2.0)	0.510		
Hypoglycemia <4.0 mmol/l	26 (10.6)	16 (12.2)	10 (8.8)	0.7 (0.3–1.6)	0.385		
Hyperglycemia >10 mmol/l	164 (66.9)	80 (61.1)	84 (73.7)	1.78 (1.1–3.1)	0.037	0.8 (0.4–1.6)	0.531
Anticonvulsants	34 (13.9)	4 (3.1)	30 (26.3)	11.3 (3.8–33.4)	0.001	17.5 (5.4–56.2)	0.001
Neuromuscular blockers	96 (39.2)	57 (43.5)	39 (34.2)	0.7 (0.4–1.1)	0.138		
Renal replacement therapy	16 (6.5)	4 (3.1)	12 (10.5)	3.7 (1.2–11.9)	0.026	3.2 (0.9–11.6)	0.070
Therapeutic hypothermia	201 (82.0)	118 (90.1)	83 (90.1)	0.3 (0.1–0.6)	0.001	0.3 (0.2–0.7)	0.008
Bleeding	11 (4.5)	6 (4.6)	5 (4.4)	0.9 (0.3–3.2)	0.942		
Hypophosphatemia <0.8 mmol/l	32 (13.1)	20 (15.3)	12 (10.5)	0.6 (0.3–1.4)	0.274		
Bradycardia <40 bpm	50 (20.4)	34 (26.0)	16 (14.0)	0.5 (0.2–0.9)	0.023	0.8 (0.4–1.7)	0.539
Tachycardia >130 bpm	30 (12.2)	16 (12.2)	14 (12.3)	1.0 (0.5–2.1)	0.987		
Ventricular arrhythmias	24 (9.8)	9 (6.9)	15 (13.2)	2.0 (0.9–4.9)	0.104		
Episode(s) of hypotension	73 (29.8)	30 (22.9)	43 (37.7)	2.0 (1.2–3.6)	0.012	1.8 (0.9–3.5)	0.088
Hypocapnia ≤30 mmHg	138 (56.6)	73 (55.7)	65 (57.5)	1.1 (0.6–1.7)	0.778		
Hypercapnia ≥50 mmHg	105 (43.0)	57 (43.5)	48 (42.5)	1.0 (0.6–1.6)	0.871		
PaO ₂ <80 mmHg	183 (75.3)	94 (71.8)	89 (79.5)	1.5 (0.8–2.8)	0.166		
Hypokalaemia <3.5 mmol/l	128 (52.5)	72 (55.0)	56 (49.6)	0.8 (0.5–1.3)	0.400		
Lactate at 12 h <2.5 mmol/l	156 (63.7)	98 (74.8)	58 (50.9)	0.3 (0.2–0.6)	0.001	0.3 (0.2–0.7)	0.003
Haemoglobin <8 mg/dl	26 (10.6)	10 (7.6)	16 (14.0)	2.0 (0.9–4.5)	0.114		

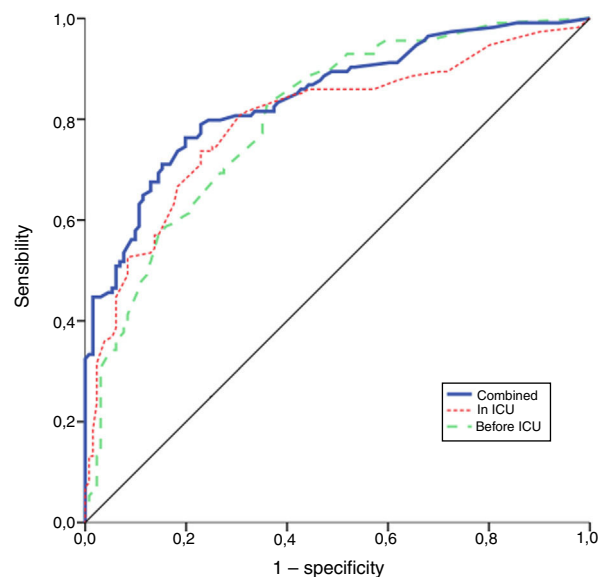
CPC: cerebral performance category. Values are odds ratio (OR) with low and upper confidence limit at 95% in bracket.

Table 3 Multivariable analysis showing statistically significant variables ($p < 0.05$) associated with poor neurologic outcome (CPC > 2).

Variables	Multivariable analyses	
	OR (95%CI)	p-Value
Age >70 years	2.0 (1.1–4.1)	0.047
Previous myocardial infarction	2.7 (1.2–6.1)	0.013
Time from call to ROSC >25 min	3.1 (1.6–6.1)	0.001
Direct admission in cardiac centre	0.5 (0.3–0.9)	0.029
Shock at hospital admission	2.9 (1.3–6.2)	0.006
Lactate at 12 h <2.5 mmol/l	0.4 (0.2–0.8)	0.008
Anticonvulsants	18.2 (5.5–60.2)	0.001

CPC: cerebral performance category; ROSC: return of spontaneous circulation. Values are odds ratio (OR) with low and upper confidence limit at 95% in bracket.

continuous line). When all variables (pre-ICU and ICU) were pooled, the Nagelkerke's R² value increased the variance in neurological outcome to 45.5% and the AUC's predictive value improved up to 77.9%. The better performance of this combined model confirms the importance of a global

**Figure 2** ROCs of three logistic regression models.

approach in order to increase the precision in predicting neurological outcome at hospital discharge of OHCA survivors. The pattern of lactate kinetics was also found to correlate to neurological outcome (Fig. 3). A progressive

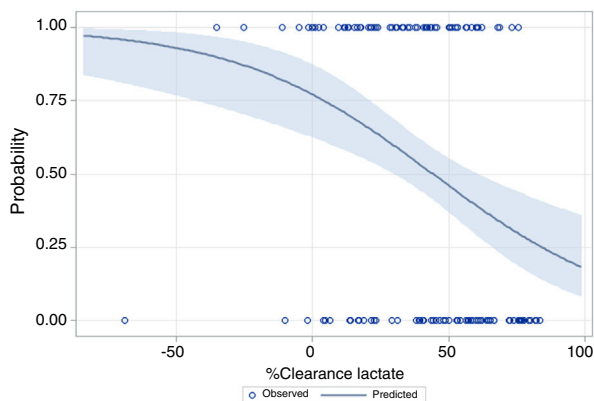


Figure 3 Clearance lactate at 12 h and probability of CPC >2 with 95% confidence intervals. The lactate reduction index used in this analysis was expressed in percentage as follows: (ICU admission lactate – lactate levels at 12 h)/ICU admission lactate * 100.

clearance of lactate after ICU admission was associated with an increased probability of CPC ≤ 2 . Conversely, a progressive increase in lactatemia raised the likelihood of poor neurologic outcome. During these ten years the proportion of patients suffering from unfavourable outcome (CPC 3-4 and mortality) were 54% (2007), 63% (2008), 57% (2009), 48% (2010), 47% (2011), 36% (2012), 32% (2013), 54% (2014), 47% (2015), 27% (2016) and 48% (2017), respectively (Fig. 4). The Cochran–Armitage test of trend did not show a statistically significant linear trend between years and the proportion of patients with poor neurological outcome (CPC > 2), $p = 0.08$.

Discussion

This study investigated the impact of continuity of care, on patients presenting OHCA due to shockable rhythm. We assessed the effectiveness of our local chain of survival and the post-resuscitation management in our centre collecting data in conformity to the Utstein register recommendations.⁴⁸ In our cohort 2007–2017 we found a survival rate of 62% and a favourable neurologic recovery in 86.2% of them (CPC ≤ 2). These encouraging results compared to a survival rate of 33% in 2005⁴ suggest that the continuity of care after OHCA in a dedicated cardiac centre ICU, could be pivotal in increasing the likelihood of good neurologic outcome.²⁷ We investigated factors occurring before ICU admission and during ICU management that can influence the outcome of patients after OHCA. Prolonged call time to ROSC (>25 min), previous myocardial infarction, age >75 years and circulatory failure at hospital admission are independent factors associated with poor outcome. While direct admission to a specialized cardiac centre and positive lactate clearance reaching plasma level <2.5 mmol/l at 12 h are linked with increased survival rate and better neurological performances. The present study and previous publications performed in other environments support the concept that victims of cardiac arrest should be directly admitted to a tertiary centre in where an experienced and multidisciplinary staff is on call 24/7.^{25,27,29–31,49–52} The large proportion of cardiovascular predisposing factors found in our cohort justifies the

direct admission in a cardiac centre with prompt interventional cardiac approach in patients suffering from OHCA due to shockable rhythm. In fact, acute myocardial ischaemia was the primary cause of 69.4% of OHCA in the studied population. Emergent coronary angiography was thus performed in 94.7% of cases and 66.5% of them were treated by percutaneous coronary intervention (PCI).^{53–55} After rapid myocardial revascularisation with restoration of an adequate organ driving blood pressure⁵⁶ ICU treatment should continue with haemodynamic support and neuroprotection.⁵⁷ This targeted management may improve survival and reduce secondary brain injury.^{19,25,34,58} Unfortunately, direct admission in a cardiac receiver centre is not yet a reality in several Western countries since two surveys on organization and post-resuscitation care indicate a large discrepancy between published guidelines and the daily clinical practice.^{35,59–61}

In our cohort, a progressive increase of plasma lactates or a negative lactate clearance index in the first hours of ICU stay are likely to be caused by the prolongation of circulatory failure which increases the risk of poor outcome.^{20,21,42,62,63} The finding of our study suggests that a positive lactate clearance index (i.e. decrease in lactate level) could be an indicator of a proper and timely haemodynamic resuscitation potentially limiting ischaemic damage. Therefore, in our centre, lactate clearance reaching normal plasma levels in the firsts 12 h was used as a marker of optimal organ reperfusion and potential favourable outcome.

Myoclonus and sub-clinical epileptic EEG patterns still remain a frequent manifestations of global brain ischaemia.^{47,64} In our study, we considered the prescription of anticonvulsant therapy as a surrogate marker for post OHCA ischaemic brain injury. From our analysis anticonvulsant therapy appears the strongest indicator of poor neurologic outcome. This result stress the importance of early EEG monitoring to detect clinically silent epileptic activity.⁶⁵ The time elapsed between OHCA and the first signs of neurological recovery is rarely reported in the literature and therefore in our work we defined the awakening when the patient followed simple verbal orders (best motor response, GCS=6). This finding documents that patients admitted to our ICU after OHCA with a positive neurological prognosis needed approximately 3–6 days of clinical observation.^{66,67} In our opinion this insight demonstrates the importance to avoid prognostication before a week from OHCA has elapsed.⁶⁸ The final analysis combining all independent predictors yields a model with a better predictive value. This result suggests that neurological outcome after OHCA depends from a complex multifaceted post-resuscitation pathway based on continuity of care.

Our study has limitations. Firstly, our results report the experience a single cardiac centre experience. In order to reduce the impact of this bias we performed a data collection based on published standards and recommendations in cardiac arrest research. This standardized approach should permit the comparison of our results with other centres using the same criteria for the assessment of quality of care in patients who have survived to OHCA. The second limitation concerns patient's selection since our register includes only shockable rhythms. Thirdly, the outcome after OHCA could be influenced by the local rescue protocols applied in each emergency system. Our study focused on post resuscitation

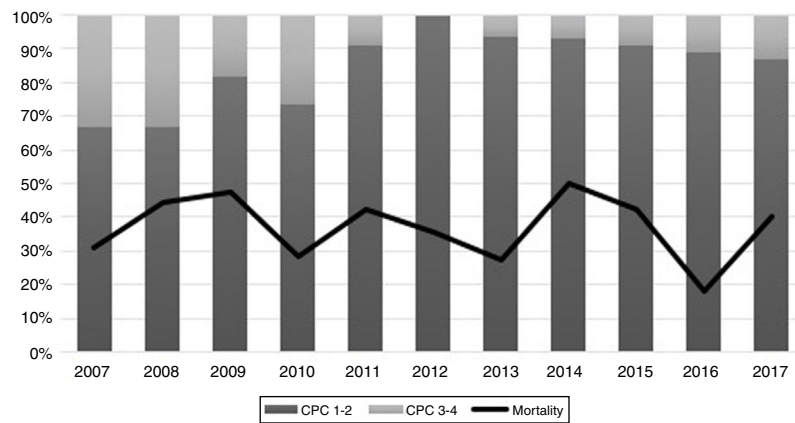


Figure 4 Mortality and CPC trend.

care; therefore, in order to decrease the impact of the pre-hospital phase on our analysis, we adjusted the ICU events for the main unbiased extra-hospital factors. Lastly, we defined CPC <2, as primary end-point, since we considered neurologic outcome as a valid surrogate of survival.

Conclusions

Direct admission to a cardiac referral centre and targeted haemodynamic ICU management monitored by positive lactate clearance during the first 12 h seem both to increase the likelihood of good neurological outcome. Additionally, the time between OHCA and the first signs of neurological recovery suggests the need for further investigations focused on the correct timing of prognostication after OHCA.

Authors' contributions

- Study design: Tiziano Cassina, Gabriele Casso;
- Study conduct: Tiziano Cassina, Sara Clivio, Alessandro Putzu, Michele Villa;
- Data analysis: Tiziano Cassina, Sara Clivio, Alessandro Putzu, Michele Villa, Daniela Fortuna;
- Data interpretation: Tiziano Cassina, Sara Clivio, Alessandro Putzu, Michele Villa, Tiziano Moccetti, Daniela Fortuna, Gabriele Casso;
- Writing and revising paper: Tiziano Cassina, Sara Clivio, Alessandro Putzu, Michele Villa, Tiziano Moccetti, Daniela Fortuna, Gabriele Casso.
- All authors read and approved the final manuscript.

Funding

The study was supported by department funds only.

Conflicts of interest

The authors declare no conflicts of interests.

Acknowledgments

The authors wish to thank the entire ICU nurses study group who worked on the Utstein register. We acknowledge the local Emergency Medical System (Federazione Cantonale Ticinese Servizi Autoambulanze) who actively participate to the resuscitation program in the region. The authors are also grateful to Prof. Angelo Auricchio (Fondazione Ticino Cuore) for reviewing the manuscript.

References

1. Nolan JP, Soar J, Cariou A, Cronberg T, Moulart VR, Deakin CD, et al. European Resuscitation Council and European Society of Intensive Care Medicine 2015 guidelines for post-resuscitation care. *Intensive Care Med.* 2015;41:2039–56.
2. Socias Crespi L, Cenicerros Rozalen MI, Rubio Roca P, Martinez Cuellar N, Garcia Sanchez A, Ripoll Vera T, et al. Epidemiological characteristics of out-of-hospital cardiorespiratory arrest recorded by the 061 emergencies system (SAMU) in the Balearic Islands (Spain), 2009–2012. *Med Intensiva.* 2015;39:199–206.
3. Kronick SL, Kurz MC, Lin S, Edelson DP, Berg RA, Billi JE, et al. Part 4: Systems of care and continuous quality improvement: 2015 American Heart Association Guidelines Update for Cardiopulmonary Resuscitation and Emergency Cardiovascular Care. *Circulation.* 2015;132 Suppl. 2:S397–413.
4. Böttiger BW, Bernhard M, Knapp J, Nagele P. Influence of EMS-physician presence on survival after out-of-hospital cardiopulmonary resuscitation: systematic review and meta-analysis. *Crit Care.* 2016;20:4.
5. Monsieurs KG, Nolan JP, Bossaert LL, Greif R, Maconochie IK, Nikolaou NI, et al. European Resuscitation Council Guidelines for Resuscitation 2015: Section 1. Executive summary. *Resuscitation.* 2015;95:1–80.
6. Goto Y, Funada A. Relationship between emergency medical services response time and bystander intervention in patients with out-of-hospital cardiac arrest. *J Am Heart Assoc.* 2018;7.
7. Ringh M, Rosenqvist M, Hollenberg J, Jonsson M, Fredman D, Nordberg P, et al. Mobile-phone dispatch of laypersons for CPR in out-of-hospital cardiac arrest. *N Engl J Med.* 2015;372:2316–25.
8. Fredman D, Svensson L, Ban Y, Jonsson M, Hollenberg J, Nordberg P, et al. Expanding the first link in the chain of survival – experiences from dispatcher referral of callers to AED locations. *Resuscitation.* 2016;107:129–34.
9. Mauri R, Burkart R, Benvenuti C, Caputo ML, Moccetti T, Del Bufalo A, et al. Better management of out-of-hospital cardiac

- arrest increases survival rate and improves neurological outcome in the Swiss Canton Ticino. *Europace*. 2016;18:398–404.
10. Geri G, Passouant O, Dumas F, Bougouin W, Champigneulle B, Arnaout M, et al. Etiological diagnoses of out-of-hospital cardiac arrest survivors admitted to the intensive care unit: insights from a French registry. *Resuscitation*. 2017;117:66–72.
 11. Vyas A, Chan PS, Cram P, Nallamothu BK, McNally B, Girotra S. Early coronary angiography and survival after out-of-hospital cardiac arrest. *Circ Cardiovasc Interv*. 2015;8.
 12. Spaulding CM, Joly LM, Rosenberg A, Monchi M, Weber SN, Dhainaut JF, et al. Immediate coronary angiography in survivors of out-of-hospital cardiac arrest. *N Engl J Med*. 1997;336:1629–33.
 13. Dumas F, Cariou A, Manzo-Silberman S, Grimaldi D, Vivien B, Rosencher J, et al. Immediate percutaneous coronary intervention is associated with better survival after out-of-hospital cardiac arrest: insights from the PROCAT (Parisian Region Out of hospital Cardiac Arrest) registry. *Circ Cardiovasc Interv*. 2010;3:200–7.
 14. Larsen JM, Ravkilde J. Acute coronary angiography in patients resuscitated from out-of-hospital cardiac arrest – a systematic review and meta-analysis. *Resuscitation*. 2012;83:1427–33.
 15. Nikolaou NI, Welsford M, Beygui F, Bossaert L, Ghaemmaghami C, Nonogi H, et al. Part 5: Acute coronary syndromes: 2015 International Consensus on Cardiopulmonary Resuscitation and Emergency Cardiovascular Care Science with Treatment Recommendations. *Resuscitation*. 2015;95:e121–46.
 16. Hollenbeck RD, McPherson JA, Mooney MR, Unger BT, Patel NC, McMullan PW, et al. Early cardiac catheterization is associated with improved survival in comatose survivors of cardiac arrest without STEMI. *Resuscitation*. 2014;85:88–95.
 17. Nielsen N, Wetterslev J, Cronberg T, Erlinge D, Gasche Y, Hassager C, et al. Targeted temperature management at 33°C versus 36°C after cardiac arrest. *N Engl J Med*. 2013;369:2197–206.
 18. Bernard SA, Gray TW, Buist MD, Jones BM, Silvester W, Gutteridge G, et al. Treatment of comatose survivors of out-of-hospital cardiac arrest with induced hypothermia. *N Engl J Med*. 2002;346:557–63.
 19. Palencia Herrejón E, Díaz Díaz D. Therapeutic hypothermia: time for a moratorium. *Med Intensiva*. 2017;41:425–8.
 20. Donnino MW, Andersen LW, Giberson T, Gaieski DF, Abella BS, Peberdy MA, et al. Initial lactate and lactate change in post-cardiac arrest: a multicenter validation study. *Crit Care Med*. 2014;42:1804–11.
 21. Hayashida K, Suzuki M, Yonemoto N, Hori S, Tamura T, Sakurai A, et al. Early lactate clearance is associated with improved outcomes in patients with postcardiac arrest syndrome: a prospective, multicenter observational study (SOS-KANTO 2012 Study). *Crit Care Med*. 2017;45:e559–66.
 22. Daviaud F, Dumas F, Demars N, Geri G, Bouglé A, Morichau-Beauchant T, et al. Blood glucose level and outcome after cardiac arrest: insights from a large registry in the hypothermia era. *Intens Care Med*. 2014;40:855–62.
 23. Sutherasan Y, Vargas M, Brunetti I, Pelosi P. Ventilatory targets after cardiac arrest. *Minerva Anesthesiol*. 2015;81:39–51.
 24. Fothergill RT, Watson LR, Chamberlain D, Viridi GK, Moore FP, Whitbread M. Increases in survival from out-of-hospital cardiac arrest: a five year study. *Resuscitation*. 2013;84:1089–92.
 25. Sunde K, Pytte M, Jacobsen D, Mangschau A, Jensen LP, Smedsrud C, et al. Implementation of a standardised treatment protocol for post resuscitation care after out-of-hospital cardiac arrest. *Resuscitation*. 2007;73:29–39.
 26. Snow V, Beck D, Budnitz T, Miller DC, Potter J, Wears RL, et al. Transitions of Care Consensus Policy Statement American College of Physicians-Society of General Internal Medicine-Society of Hospital Medicine-American Geriatrics Society-American College of Emergency Physicians-Society of Academic Emergency Medicine. *J Gen Intern Med*. 2009;24:971–6.
 27. Kern KB. Cardiac receiving centers: beyond hypothermia. *Curr Opin Crit Care*. 2012;18:246–50.
 28. Schober A, Holzer M, Hochrieser H, Posch M, Schmutz R, Metnitz P. Effect of intensive care after cardiac arrest on patient outcome: a database analysis. *Crit Care*. 2014;18:R84.
 29. Wnent J, Seewald S, Heringlake M, Lemke H, Brauer K, Lefering R, et al. Choice of hospital after out-of-hospital cardiac arrest – a decision with far-reaching consequences: a study in a large German city. *Crit Care*. 2012;16:R164.
 30. Myerburg RJ. Initiatives for improving out-of-hospital cardiac arrest outcomes. *Circulation*. 2014;130:1840–3.
 31. Nichol G, Aufderheide TP, Eigel B, Neumar RW, Lurie KG, Bufalino VJ, et al. Regional systems of care for out-of-hospital cardiac arrest: a policy statement from the American Heart Association. *Circulation*. 2010;121:709–29.
 32. McCarthy JJ, Carr B, Sasson C, Bobrow BJ, Callaway CW, Neumar RW, et al. Out-of-hospital cardiac arrest resuscitation systems of care: a scientific statement from the American Heart Association. *Circulation*. 2018;137:e645–60.
 33. Kleinman ME, Perkins GD, Bhanji F, Billi JE, Bray JE, Callaway CW, et al. ILCOR Scientific Knowledge Gaps and Clinical Research Priorities for Cardiopulmonary Resuscitation and Emergency Cardiovascular Care: A Consensus Statement. *Circulation*. 2018;137:e802–19.
 34. Martín-Hernández H, López-Messa JB, Pérez-Vela JL, Molinalatorre R, Cárdenas-Cruz A, Lesmes-Serrano A, et al. Managing the post-cardiac arrest syndrome. Directing Committee of the National Cardiopulmonary Resuscitation Plan (PNRCP) of the Spanish Society for Intensive Medicine, Critical Care and Coronary Units (SEMICYUC). *Med Intensiva*. 2010;34:107–26.
 35. May TL, Lary CW, Riker RR, Friberg H, Patel N, Søreide E, et al. Variability in functional outcome and treatment practices by treatment center after out-of-hospital cardiac arrest: analysis of International Cardiac Arrest Registry. *Intensive Care Med*. 2019;45:637–46.
 36. Yeung J, Matsuyama T, Bray J, Reynolds J, Skrifvars MB. Does care at a cardiac arrest centre improve outcome after out-of-hospital cardiac arrest? A systematic review. *Resuscitation*. 2019;137:102–15.
 37. Jollis JG, Al-Khalidi HR, Roettig ML, Berger PB, Corbett CC, Doerfler SM, et al. Impact of Regionalization of ST-Segment-Elevation Myocardial Infarction Care on Treatment Times and Outcomes for Emergency Medical Services-Transported Patients Presenting to Hospitals With Percutaneous Coronary Intervention: Mission: Lifeline Accelerator-2. *Circulation*. 2018;137:376–87.
 38. Langhelle A, Nolan J, Herlitz J, Castren M, Wenzel V, Soreide E, et al. Recommended guidelines for reviewing, reporting, and conducting research on post-resuscitation care: the Utstein style. *Resuscitation*. 2005;66:271–83.
 39. Nielsen N, Sunde K, Hovdenes J, Riker RR, Rubertsson S, Stammed P, et al. Adverse events and their relation to mortality in out-of-hospital cardiac arrest patients treated with therapeutic hypothermia. *Crit Care Med*. 2011;39:57–64.
 40. Beiser DG, Carr GE, Edelson DP, Peberdy MA, Hoek TL. Derangements in blood glucose following initial resuscitation from in-hospital cardiac arrest: a report from the national registry of cardiopulmonary resuscitation. *Resuscitation*. 2009;80:624–30.
 41. Roberts BW, Kilgannon JH, Chansky ME, Mittal N, Wooden J, Trzeciak S. Association between postresuscitation partial pressure of arterial carbon dioxide and neurological outcome in patients with post-cardiac arrest syndrome. *Circulation*. 2013;127:2107–13.
 42. Lee TR, Kang MJ, Cha WC, Shin TG, Sim MS, Jo IJ, et al. Better lactate clearance associated with good neurologic outcome in

- survivors who treated with therapeutic hypothermia after out-of-hospital cardiac arrest. *Crit Care*. 2013;17:R260.
43. Bellomo R, Ronco C, Kellum JA, Mehta RL, Palevsky P, ADQI workgroup. Acute renal failure – definition, outcome measures, animal models, fluid therapy and information technology needs: the Second International Consensus Conference of the Acute Dialysis Quality Initiative (ADQI) Group. *Crit Care*. 2004;8:R204–12.
 44. Ajam K, Gold LS, Beck SS, Damon S, Phelps R, Rea TD. Reliability of the cerebral performance category to classify neurological status among survivors of ventricular fibrillation arrest: a cohort study. *Scand J Trauma Resusc Emerg Med*. 2011;19:38.
 45. Grossestreuer AV, Abella BS, Sheak KR, Cinousis MJ, Perman SM, Leary M, et al. Inter-rater reliability of post-arrest cerebral performance category (CPC) scores. *Resuscitation*. 2016;109:21–4.
 46. Corrada E, Mennuni MG, Grieco N, Sesana G, Beretta G, Presbitero P. Neurological recovery after out-of-hospital cardiac arrest: hospital admission predictors and one-year survival in an urban cardiac network experience. *Minerva Cardioangiolog*. 2013;61:451–60.
 47. Amorim E, Rittenberger JC, Baldwin ME, Callaway CW, Popescu A, Service PCA. Malignant EEG patterns in cardiac arrest patients treated with targeted temperature management who survive to hospital discharge. *Resuscitation*. 2015;90:127–32.
 48. Perkins GD, Jacobs IG, Nadkarni VM, Berg RA, Bhanji F, Biarrent D, et al. Cardiac arrest and cardiopulmonary resuscitation outcome reports: update of the Utstein Resuscitation Registry Templates for Out-of-Hospital Cardiac Arrest: a statement for healthcare professionals from a task force of the International Liaison Committee on Resuscitation (American Heart Association, European Resuscitation Council, Australian and New Zealand Council on Resuscitation, Heart and Stroke Foundation of Canada, InterAmerican Heart Foundation, Resuscitation Council of Southern Africa, Resuscitation Council of Asia); and the American Heart Association Emergency Cardiovascular Care Committee and the Council on Cardiopulmonary, Critical Care, Perioperative and Resuscitation. *Circulation*. 2015;132:1286–300.
 49. Bobrow BJ, Kern KB. Regionalization of postcardiac arrest care. *Curr Opin Crit Care*. 2009;15:221–7.
 50. Spaite DW, Bobrow BJ, Stolz U, Berg RA, Sanders AB, Kern KB, et al. Statewide regionalization of postarrest care for out-of-hospital cardiac arrest: association with survival and neurologic outcome. *Ann Emerg Med*. 2014;64, 496–506.e1.
 51. Carr BG, Goyal M, Band RA, Gaieski DF, Abella BS, Merchant RM, et al. A national analysis of the relationship between hospital factors and post-cardiac arrest mortality. *Intensive Care Med*. 2009;35:505–11.
 52. Heffner AC, Pearson DA, Nussbaum ML, Jones AE. Regionalization of post-cardiac arrest care: implementation of a cardiac resuscitation center. *Am Heart J*. 2012;164, 493–501.e2.
 53. Wilson M, Grossestreuer AV, Gaieski DF, Abella BS, Frohna W, Goyal M. Incidence of coronary intervention in cardiac arrest survivors with non-shockable initial rhythms and no evidence of ST-elevation MI (STEMI). *Resuscitation*. 2017;113:83–6.
 54. Lee TR, Hwang SY, Cha WC, Shin TG, Sim MS, Jo IJ, et al. Role of coronary angiography for out-of-hospital cardiac arrest survivors according to postreturn of spontaneous circulation on an electrocardiogram. *Medicine (Baltimore)*. 2017;96:e6123.
 55. Lemkes JS, Janssens GN, van der Hoeven NW, Jewbali LSD, Dubois EA, Meuwissen M, et al. Coronary angiography after cardiac arrest without ST-segment elevation. *N Engl J Med*. 2019;380:1397–407.
 56. Beylin ME, Perman SM, Abella BS, Leary M, Shofer FS, Grossestreuer AV, et al. Higher mean arterial pressure with or without vasoactive agents is associated with increased survival and better neurological outcomes in comatose survivors of cardiac arrest. *Intensive Care Med*. 2013;39:1981–8.
 57. Sundgreen C, Larsen FS, Herzog TM, Knudsen GM, Boesgaard S, Aldershvile J. Autoregulation of cerebral blood flow in patients resuscitated from cardiac arrest. *Stroke*. 2001;32:128–32.
 58. Nolan JP, Soar J. Post resuscitation care – time for a care bundle? *Resuscitation*. 2008;76:161–2.
 59. Saarinen S, Castrén M, Virkkunen I, Kämäräinen A. Post resuscitation care of out-of-hospital cardiac arrest patients in the Nordic countries: a questionnaire study. *Scand J Trauma Resusc Emerg Med*. 2015;23:60.
 60. Ford AH, Clark T, Reynolds EC, Ross C, Shelley K, Simmonds L, et al. Management of cardiac arrest survivors in UK intensive care units: a survey of practice. *J Intensive Care Soc*. 2016;17:117–21.
 61. Couper K, Kimani PK, Gale CP, Quinn T, Squire IB, Marshall A, et al. Patient, health service factors and variation in mortality following resuscitated out-of-hospital cardiac arrest in acute coronary syndrome: analysis of the Myocardial Ischaemia National Audit Project. *Resuscitation*. 2018;124:49–57.
 62. Lee DH, Cho IS, Lee SH, Min YI, Min JH, Kim SH, et al. Correlation between initial serum levels of lactate after return of spontaneous circulation and survival and neurological outcomes in patients who undergo therapeutic hypothermia after cardiac arrest. *Resuscitation*. 2015;88:143–9.
 63. Oddo M, Ribordy V, Feihl F, Rossetti AO, Schaller MD, Chioleró R, et al. Early predictors of outcome in comatose survivors of ventricular fibrillation and non-ventricular fibrillation cardiac arrest treated with hypothermia: a prospective study. *Crit Care Med*. 2008;36:2296–301.
 64. Rossetti AO, Tovar Quiroga DF, Juan E, Novy J, White RD, Ben-Hamouda N, et al. Electroencephalography predicts poor and good outcomes after cardiac arrest: a two-center study. *Crit Care Med*. 2017;45:e674–82.
 65. Hofmeijer J, van Putten MJ. EEG in postanoxic coma: prognostic and diagnostic value. *Clin Neurophysiol*. 2016;127:2047–55.
 66. Grossestreuer AV, Abella BS, Leary M, Perman SM, Fuchs BD, Kolansky DM, et al. Time to awakening and neurologic outcome in therapeutic hypothermia-treated cardiac arrest patients. *Resuscitation*. 2013;84:1741–6.
 67. Gold B, Puertas L, Davis SP, Metzger A, Yannopoulos D, Oakes DA, et al. Awakening after cardiac arrest and post resuscitation hypothermia: are we pulling the plug too early? *Resuscitation*. 2014;85:211–4.
 68. Sandroni C, D’Arrigo S, Nolan JP. Prognostication after cardiac arrest. *Crit Care*. 2018;22:150.