



ORIGINAL

## Predictive factors of six-week mortality in critically ill patients with SARS-CoV-2: A multicenter prospective study



Á. Estella<sup>a,\*</sup>, J.L. Garcia Garmendia<sup>b</sup>, C. de la Fuente<sup>c</sup>, J.F. Machado Casas<sup>d</sup>, M.E. Yuste<sup>e</sup>, R. Amaya Villar<sup>f</sup>, M.A. Estecha<sup>g</sup>, L. Yaguez Mateos<sup>h</sup>, M.L. Cantón Bulnes<sup>i</sup>, A. Loza<sup>j</sup>, J. Mora<sup>k</sup>, L. Fernández Ruiz<sup>l</sup>, B. Díez del Corral Fernández<sup>a</sup>, M. Rojas Amezcua<sup>m</sup>, M.I. Rodríguez Higuera<sup>n</sup>, I. Díaz Torres<sup>o</sup>, M. Recuerda Núñez<sup>o</sup>, M. Zaheri Beryanaki<sup>p</sup>, F. Rivera Espinar<sup>q</sup>, D.F. Matallana Zapata<sup>r</sup>, S.G. Moreno Cano<sup>a</sup>, B. Gimenez Beltrán<sup>a</sup>, N. Muñoz<sup>s</sup>, A. Sainz de Baranda Piñero<sup>t</sup>, P. Bustelo Bueno<sup>t</sup>, E. Moreno Barriga<sup>o</sup>, J.J. Rios Toro<sup>u</sup>, M. Pérez Ruiz<sup>a</sup>, C. Gómez González<sup>f</sup>, A. Breval Flores<sup>s</sup>, A. de San José Bermejo Gómez<sup>v</sup>, M.A. Ruiz Cabello Jimenez<sup>w</sup>, M. Guerrero Marín<sup>h</sup>, A. Ortega Ordiales<sup>k</sup>, J. Tejero-Aranguren<sup>e</sup>, C. Rodríguez Mejías<sup>d</sup>, J. Gomez de Oña<sup>x</sup>, C. de la Hoz<sup>x</sup>, D. Ocaña Fernández<sup>y</sup>, S. Ibañez Cuadros<sup>o</sup>, J. Garnacho Montero<sup>z</sup>, On behalf of the Work Group of Infectious Disease (GTEI) de la Sociedad Andaluza de Medicina Intensiva y Unidades coronarias SAMIUC

<sup>a</sup> Intensive Care Unit, Hospital Universitario de Jerez, Jerez, Spain

<sup>b</sup> Intensive Care Unit, Hospital San Juan de Dios del Aljarafe, Bormujos, Sevilla, Spain

<sup>c</sup> Intensive Care Unit, Hospital Universitario Reina Sofía de Córdoba, Córdoba, Spain

<sup>d</sup> Intensive Care Unit, Hospital Universitario Virgen de las Nieves de Granada, Granada, Spain

<sup>e</sup> Intensive Care Unit, Hospital Universitario Clínico San Cecilio de Granada, Granada, Spain

<sup>f</sup> Intensive Care Unit, Hospital Universitario Virgen del Rocío de Sevilla, Sevilla, Spain

<sup>g</sup> Intensive Care Unit, Hospital Universitario Virgen de la Victoria de Málaga, Málaga, Spain

<sup>h</sup> Intensive Care Unit, Hospital Universitario de Jaén, Jaén, Spain

<sup>i</sup> Intensive Care Unit, Hospital Universitario Virgen Macarena de Sevilla, Sevilla, Spain

<sup>j</sup> Intensive Care Unit, Hospital Universitario Virgen de Valme, Sevilla, Spain

<sup>k</sup> Intensive Care Unit, Hospital Universitario Regional de Málaga, Málaga, Spain

<sup>l</sup> Intensive Care Unit, Hospital San Juan de la Cruz Úbeda, Úbeda, Jaén, Spain

<sup>m</sup> Intensive Care Unit, Hospital Infanta Margarita de Cabra, Cabra, Spain

<sup>n</sup> Intensive Care Unit, Hospital Universitario Torrecárdenas Almería, Almería, Spain

<sup>o</sup> Intensive Care Unit, Hospital Universitario de Puerto Real, Puerto Real, Spain

<sup>p</sup> Intensive Care Unit, Hospital de Antequera, Antequera, Spain

<sup>q</sup> Intensive Care Unit, Hospital de Montilla, Montilla, Córdoba, Spain

<sup>r</sup> Intensive Care Unit, Hospital Infanta Elena de Huelva, Hospital Quirón Huelva, Huelva, Spain

<sup>s</sup> Intensive Care Unit, Hospital de la Cruz Roja de Córdoba, Córdoba, Spain

<sup>t</sup> Intensive Care Unit, Hospital HLA Puerta del Sur de Jerez, Jerez, Spain

\* Corresponding author.

E-mail address: [litoestella@hotmail.com](mailto:litoestella@hotmail.com) (Á. Estella).

<sup>u</sup> Intensive Care Unit, Hospital de Ronda, Ronda, Spain

<sup>v</sup> Intensive Care Unit, Hospital San Juan de Dios de Córdoba, Córdoba, Spain

<sup>w</sup> Intensive Care Unit, Hospital de Pozoblanco, Pozoblanco, Córdoba, Spain

<sup>x</sup> Intensive Care Unit, Hospital de Poniente, Almería, Spain

<sup>y</sup> Intensive Care Unit, Hospital La Inmaculada Huerca-Overa de Almería, Almería, Spain

<sup>z</sup> Intensive Care Unit, Hospital Universitario Virgen de la Macarena Sevilla, Sevilla, Spain

Received 28 December 2020; accepted 22 February 2021

## KEYWORDS

SARS-CoV-2;  
ICU;  
Corticosteroids;  
Tocilizumab;  
Lopinavir/ritonavir

## Abstract:

**Objective:** The objective of the study is to identify the risk factors associated with mortality at six weeks, especially by analyzing the role of antivirals and immunomodulators.

**Design:** Prospective descriptive multicenter cohort study.

**Setting:** 26 Intensive care units (ICU) from Andalusian region in Spain.

**Patients or participants:** Consecutive critically ill patients with confirmed SARS-CoV-2 infection were included from March 8 to May 30.

**Interventions:** None.

**Variables:** Variables analyzed were demographic, severity scores and clinical condition. Support therapy, drug and mortality were analyzed. An univariate followed by multivariate Cox regression with propensity score analysis was applied.

**Results:** 495 patients were enrolled, but 73 of them were excluded for incomplete data. Thus, 422 patients were included in the final analysis. Median age was 63 years and 305 (72.3%) were men. ICU mortality: 144/422 34%; 14 days mortality: 81/422 (19.2%); 28 days mortality: 121/422 (28.7%); 6-week mortality 152/422 36.5%. By multivariable Cox proportional analysis, factors independently associated with 42-day mortality were age, APACHE II score, SOFA score at ICU admission >6, Lactate dehydrogenase at ICU admission >470 U/L, Use of vasopressors, extrarenal depuration, %lymphocytes 72 h post-ICU admission <6.5%, and thrombocytopenia whereas the use of lopinavir/ritonavir was a protective factor.

**Conclusion:** Age, APACHE II, SOFA > value of 6 points, along with vasopressor requirements or renal replacement therapy have been identified as predictor factors of mortality at six weeks.

Administration of corticosteroids showed no benefits in mortality, as did treatment with tocilizumab.

Lopinavir/ritonavir administration is identified as a protective factor.

© 2021 Elsevier España, S.L.U. y SEMICYUC. All rights reserved.

## PALABRAS CLAVE

SARS-CoV-2;  
UCI;  
Corticoides;  
Tocilizumab;  
Lopinavir/ritonavir

## Factores predictivos de la mortalidad a las seis semanas en pacientes críticos con SARS-CoV-2: estudio multicéntrico prospectivo

### Resumen

**Objetivo:** Identificar los factores de riesgo asociados con la mortalidad a las seis semanas.

**Diseño:** Estudio prospectivo multicéntrico.

**Ámbito:** Se incluyeron a 26 pacientes de la Unidad de Cuidados Intensivos (UCI) de Andalucía.

**Pacientes o participantes:** Pacientes ingresados en UCI por neumonía grave por SARS-CoV-2 del 8 de marzo al 30 de mayo de 2020.

**Intervenciones:** Ninguna.

**Variables de interés principales:** Características demográficas, clínicas y escalas de gravedad. Se analizaron tratamientos de soporte, fármacos y la mortalidad.

**Resultados:** Se incluyeron 495 pacientes, 73 fueron excluidos por incompletos y 422 pacientes se incorporaron en el análisis final. La mediana de edad fue de 63 años, 305 (72,3%) eran hombres. La mortalidad en la UCI fue: 144/422 34%; mortalidad a los 14 días: 81/422 (19,2%); mortalidad a los 28 días: 121/422 (28,7%); mortalidad a las seis semanas 152/422 36,5%.

Los factores asociados con la mortalidad a los 42 días fueron la edad, APACHE II, SOFA > 6 y LDH al ingreso > 470 U/L, uso de vasopresores, necesidad de técnicas de reemplazo de la función renal, porcentaje de linfocitos a las 72 horas del ingreso en UCI < 6,5%, y trombocitopenia, mientras que el uso de lopinavir/ritonavir fue identificado como un factor protector.

*Conclusiones:* La edad, gravedad y fracaso orgánico junto con la necesidad de terapias de soporte fueron identificadas como factores predictores de mortalidad a las seis semanas.

La administración de corticoesteroides a dosis altas no mostró beneficios en la mortalidad, al igual que el tratamiento con tocilizumab, lopinavir/ritonavir se identificaron como un factor protector.

© 2021 Elsevier España, S.L.U. y SEMICYUC. Todos los derechos reservados.

## Introduction

Past december, the first cases of respiratory infection caused by SARS-CoV-2 were documented in the Chinese city of Wuhan, observing as a percentage of patients developing the most serious clinical forms requiring respiratory support treatment with invasive mechanical ventilation.<sup>1</sup> Already, in the first series of published patients it was found that between 10% and 20% of hospital admissions would develop Acute Respiratory Distress Syndrome (ARDS) and/or multiple-organ failure,<sup>2</sup> charging special importance the role that intensive care units are occupying in the pandemic. Since then, the expansion of the epidemic has been global causing a serious unprecedented health crisis in the history of modern medicine. In the middle of October, more than 71 million cases are surpassed with more than one million and six thousand deaths documented by the World Health Organization.<sup>3</sup> Andalusia is the Spanish Autonomous Community with the largest population in Spain, with 8.446.561 inhabitants. From March to May 2020, more than 6000 patients were admitted to hospital, exceeding 12% of ICU admissions. The Working Group on Infectious Diseases of the Andalusian Society of Intensive Medicine and Coronary Units (SAMICU) has worked dynamically and continuously since the beginning of March, when the first patient was admitted in ICU occurred, by prospectively registering and monitoring ICU admitted cases with a fundamentally clinical objective so that the exchange of clinical information among the Andalusian ICU, in the form of a weekly newsletter, allowed to expand and share the limited clinical experience available at the beginning of the health emergency with the aim of improving the healthcare of critically ill patients infected by SARS-CoV-2. This study is the result of this collaborative project. It has been scarcely studied predictors of short term mortality 6 weeks after ICU admission now that many studies have been published with short-term mortality data and in many of them patients were still admitted in ICU.

The objective of the study is to identify the risk factors associated with mortality at six weeks, especially by analyzing the role of antivirals and immunomodulators in both the total cohort of patients and those who needed respiratory support with invasive mechanical ventilation.

## Methods

This is a prospective descriptive multicenter cohort study. Twenty-six intensive care units (ICU) participate in the study from Andalusian region in Spain.

## Study population

Consecutive critically ill patients with confirmed SARS-CoV-2 infection admitted to the participants ICU were included from March 8 to May 30.

**Inclusion criteria:** Patients older than 18 years, acute infection by SARS-CoV-2 confirmed by RT-PCR and admitted to the ICU, and a potential surveillance time of 6 weeks at least.

**Exclusion criteria:** pregnant woman, patients with SARS-CoV-2 but admitted to ICU for other reason not related to COVID-19, and patients or relatives who declined to participate in the study.

Because of the nature and contact restrictions of this pandemic disease, the informed consent was obtained from the patient when it was possible or from the relatives by a phone call with or without a complementary mail, and it was registered in the medical history. The Ethical Committee of Investigation in Cádiz [SAM-COVUCI-2020-01] approved the study protocol.

**Variables:** We analyzed demographic, epidemiological, comorbidities collected in the electronic medical history, body mass index, time from onset of symptoms, microbiological diagnoses, defining bacterial coinfection as an acute bacterial infection at clinical onset presentation of viral pneumonia with an isolate from respiratory tract or blood culture and/or a positive pneumococcal urinary antigen, time from hospital admission to ICU admission, severity scores and clinical condition at ICU admission, laboratory determinations at ICU admission and 72 h after, respiratory function at ICU admission and 72 h after, need for support therapy in ICU (high flow oxygen, non-invasive and invasive ventilation, prone position therapy, extrarenal depuration, extracorporeal membrane oxygenation), drug therapy (chloroquine, antiviral, interleukin-6 inhibitors, steroids, antibiotics), and mortality (ICU, early at 14 days, 28 days and 6 weeks mortality [main outcome]).

## Statistical analysis

The design of the analysis comprised an univariate followed by multivariate Cox regression with propensity score analysis for the whole population and for the group of intubated patients, and a complementary decision tree analysis for the whole population with 6-weeks mortality as the outcome variable.

A descriptive analysis was made using absolute frequencies for qualitative variables and mean with standard

deviation (SD) or median with percentiles 25th and 75th (p25–p75) when appropriate. For the univariate analysis, we used Chi-square or exact Fisher test when appropriate for qualitative variables and Student *t*-test or Mann–Whitney *U* test for parametric or nonparametric variables.

All comparisons were two-tailed, and signification was established on  $p < 0.05$ . Mortality related variables were determined using Cox proportional hazards multivariate analysis. We include those variables with  $p < 0.20$  in the univariate analysis and other that were considered to be clinically relevant for this study, like the drug therapy. Hazard ratios and 95% confidence intervals were calculated. Sample size calculation was made with the assumptions of a 50% mortality rate and 20 significant variables in the univariate analysis. With the requirement of 10 events for each analyzed variable, we calculated a simple size of 400 patients. Continuous variables significantly different in the univariate analysis were transformed in dichotomic variables using a ROC curve analysis, determining the cutoff point with maximum sensitivity and specificity. Missing values in these new variables were assigned to be negative values in order to facilitate the multivariate analysis, if the number of missing values was less than 10%. Because of the potential imbalances in the characteristics of treatment groups, we assessed the probability of receiving lopinavir/ritonavir by a logistic regression model to calculate a propensity score (PS). We included variables a  $p$  less than 0.20 in the univariate analysis. This approach was determined to minimize the risks of confounding by indication of this drug. The covariates finally included in this PS were APACHE II score and respiratory rate in the ICU. This PS was included as a covariate in the multivariate Cox regression analysis for 42-days mortality.

A classification of regression tree (CRT) analysis was also made to characterize risk groups for 42-days mortality, with a maximum of 5 levels, minimum parental level of 50 cases and minimum childsize of 10 cases, and a cross validation with 20 sample folds.

## Results

In the study period, 723 were admitted in Andalusian ICU, 495 patients were enrolled in this study but 73 of them were excluded for incomplete data. Thus, 422 patients were included in the final analysis (Fig. 1). Median age was 63 years (54–71) and 305 (72.3%) were men. ICU mortality: 144/422 34%; 14 days mortality: 81/422 (19.2%); 28 days mortality: 121/422 (28.7%); 6-week mortality 152/422 36.5%. Table 1 compares demographics and clinical characteristics of those who died with those alive on day 42. As expected, those who died were significantly older and with higher APACHE II and SOFA scores. Moreover, level of consciousness (evaluated by GCS) was worse in those who were not alive at day 42.

The laboratory findings of all critically ill patients on day 1 and 3 are summarized in Table 2. The median PaO<sub>2</sub>/FiO<sub>2</sub> ratio on day 1 was not statistically different in those who died compared with survivors, but it was significantly lower on day 3 in those who died. Percentage of lymphocytes, neutrophils/lymphocytes ratio, and platelets were statistically different on day 1 and day 3.

Approximately, one-third of the patients were admitted to the ICU from the Emergency Department (138 patients; 32.7%) and the rest from the general ward. Median time from viral symptom onset to hospital admission was 8<sup>6–11</sup> days.

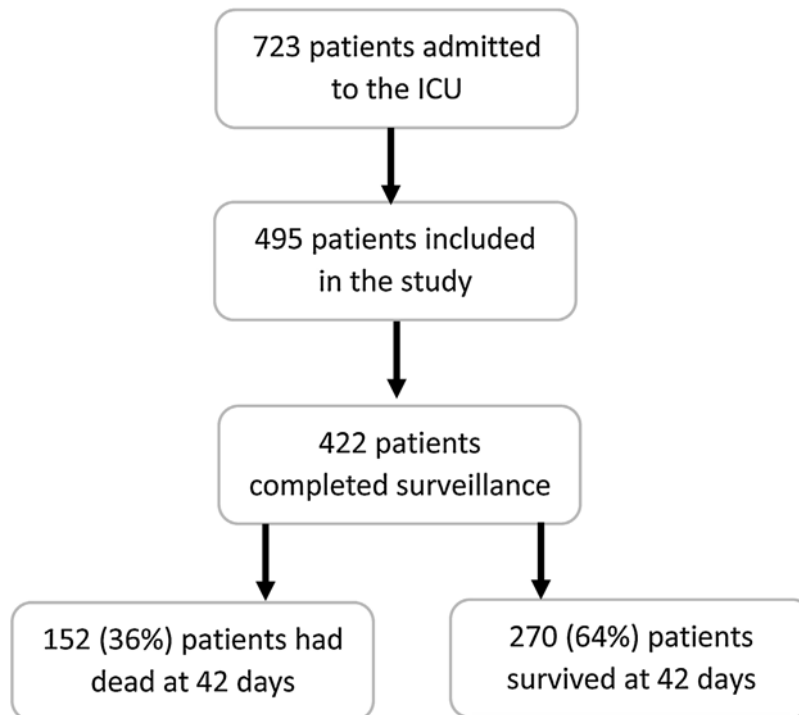


Figure 1 Flowchart of the study participants.

**Table 1** Baseline characteristics and univariate analysis with 6 weeks mortality.

	<i>n</i>	Dead at 42 days ( <i>n</i> = 152)	Survivor at 42 days ( <i>n</i> = 270)	OR (CI 95%)	<i>p</i>
Age [years], mean (SD)	419	65.6 (11.0)	59.4 (11.8)		<0.001
Age groups, <i>n</i> (%)	419				<0.001
18–45 years		6 (4)	35 (13)	1	
46–60 years		34 (22.8)	95 (35.2)	2.09 (0.81–5.40)	
61–75 years		85 (57)	125 (46.3)	3.97 (1.60–9.84)	
>75 years		24 (16.1)	15 (5.6)	9.33 (3.17–27.5)	
Sex (male), <i>n</i> (%)	420	118 (78.1)	187 (69.5)	1.57 (0.99–2.50)	0.057
Body mass index, mean (SD)	356	29.1 (5.2)	29.2 (5.4)		0.859
COPD, <i>n</i> (%)	422	9 (5.9)	16 (5.9)	1.00 (0.43–2.32)	0.998
Renal disease, <i>n</i> (%)	422	21 (13.8)	23 (8.5)	1.72 (0.92–3.23)	0.087
Cirrhosis, <i>n</i> (%)	422	7 (4.6)	4 (1.5)	3.21 (0.92–11.2)	0.063
Onco haematological disease, <i>n</i> (%)	422	13 (8.6)	17 (6.3)	1.39 (0.66–2.95)	0.387
APACHE II score at ICU admission, mean (SD)	410	16.4 (9.6)	11.0 (5.0)		<0.001
SOFA score at ICU admission, mean (SD)	398	6.6 (3.0)	4.9 (2.7)		<0.001
GCS score at ICU admission, mean (SD)	419	13.9 (3.2)	14.8 (1.4)		<0.001
SOFA score 72 h post-ICU admission, mean (SD)	386	8.0 (2.7)	5.7 (2.8)		<0.001
High flow oxygen, <i>n</i> (%)	420	52 (34.4)	143 (53.2)	0.46 (0.31–0.70)	<0.001
Non-invasive ventilation, <i>n</i> (%)	420	12 (7.9)	24 (8.9)	0.88 (0.43–1.82)	0.732
High flow oxygen or non-invasive ventilation before intubation, <i>n</i> (%)	407	54 (36.2)	86 (33.3)	1.14 (0.75–1.74)	0.552
Endotracheal intubation, <i>n</i> (%)	422	146 (96.1)	196 (72.6)	9.19 (3.89–21.69)	<0.001
Vasopressors, <i>n</i> (%)	419	143 (94.7)	190 (70.9)	7.34 (3.43–15.68)	<0.001
Days with vasopressors, median (p25–p75)	314	7 (4–14)	6 (3–10)		0.027
Extrarenal depuration, <i>n</i> (%)	415	33 (22.3)	17 (6.4)	4.22 (2.26–7.89)	<0.001
Bacterial infection at presentation, <i>n</i> (%)	416	24 (16.1)	31 (11.6)	1.46 (0.82–2.60)	0.194
Nosocomial infection, <i>n</i> (%)	410	54 (36.7)	95 (36.1)	1.03 (0.68–1.56)	0.902
Days from ICU admission to VAP, median (p25–p75)	101	9 (6–13)	12 (8–19)		0.005
Catheter related infection. <i>n</i> (%)	415	27 (18.1)	47 (17.7)	1.03 (0.61–1.74)	0.908
Lopinavir/ritonavir, <i>n</i> (%)	421	136 (90.1)	254 (94.1)	0.57 (0.27–1.19)	0.131
Remdesivir, <i>n</i> (%)	421	2 (1.3)	6 (2.2)		0.518
Interferon β 1b, <i>n</i> (%)	421	72 (47.7)	130 (48.1)		0.927
Chloroquine, <i>n</i> (%)	410	119 (81.5)	219 (83.0)		0.712
Tocilizumab, <i>n</i> (%)	410	64 (43.5)	102 (38.8)		0.347
Empiric antimicrobial therapy, <i>n</i> (%)	420	140 (92.7)	248 (92.2)	1.08 (0.51–2.30)	0.847
Days of empiric antimicrobial therapy, median (p25–p75)	377	6 (4–8)	6 (4–8)		0.314
Steroids therapy, <i>n</i> (%)	420	99 (66.9)	161 (59.9)	1.36 (0.89–2.06)	0.156
Days from symptoms to hospital admission, median (p25–p75)	417	7 (4–9)	7 (4–9)		0.379
Days from symptoms to microbiological diagnose, median (p25–p75)	413	7 (4–10)	7 (5–9)		0.813
Days from hospital to ICU admission, median (p25–p75)	412	1 (0–3)	2 (1–4)		0.020
Days from symptoms to therapy, median (p25–p75)	398	7 (5–10)	7 (5–10)		0.961
ICU stay, median (p25–p75)	421	13 (6–23)	16 (8–31)		0.012

APACHE: Age, Physiology, Chronic Health Evaluation; CI: confidence interval; COVID: coronavirus disease; COPD: chronic obstructive pulmonary disease; DAP: diastolic arterial pressure; ECMO: extracorporeal membrane oxygenation; ER: emergency room; FiO2: fraction of inspired oxygen; GCS: Glasgow Coma Score; ICU: Intensive Care Unit; MAP: mean arterial pressure; OR: odds ratio; PaO2: partial pressure of Oxygen; PEEP: positive end-expiratory pressure; SAP: systolic arterial pressure; Sat: saturation; SD: standard deviation; SOFA: Sequential Organ Failure assessment; VAP: ventilator-associated pneumonia.

**Table 2** Laboratory findings of all critically ill patients on day 1 and 3 of ICU admission.

	At ICU admission				72 h post-ICU admission			
	<i>n</i>	Dead at 42 days ( <i>n</i> = 152)	Survivor at 42 days ( <i>n</i> = 270)	<i>p</i>	<i>n</i>	Dead at 42 days ( <i>n</i> = 152)	Survivor at 42 days ( <i>n</i> = 270)	<i>p</i>
PaO <sub>2</sub> /FiO <sub>2</sub> , mean (SD)	319	134.1 (74.7)	140.6 (77.0)	0.450	305	189.4(75.5)	2089 (78.0)	0.031
Delta PaO <sub>2</sub> /FiO <sub>2</sub> 72–24 h, median (p25–p75)					298	10 (–42 to 67)	30 (–32 to 81)	0.253
Leucocytes [ $\times 10^9$ /L], mean (SD)	418	11.2 (8.7)	9.9 (6.0)	0.104	393	11.8 (11.4)	9.6 (6.5)	0.026
Neutrophils [ $\times 10^9$ /L], mean (SD)	418	9.6 (7.3)	8.5 (5.5)	0.086	390	9.7 (7.4)	8.0 (5.2)	0.014
% Neutrophils [ $\times 10^9$ /L], mean (SD)	416	86.4 (8.6)	84.7 (8.1)	0.046	390	84.7(13.1)	81.9(8.8)	0.015
Lymphocytes [ $\times 10^6$ /L], mean (SD)	409	637.5 (397.1–932.5)	773.0 (490.0–996.0)	0.663	383	595 (365–922)	720 (479–1034)	0.002
% Lymphocytes, mean (SD)	409	8.1 (5.4)	9.7 (6.3)	0.013	384	7.6 (6.4)	10.3 (6.3)	<0.001
Ratio neutrophils/lymphocytes, mean (SD)	409	18.3 (19.0)	13.9 (12.4)	0.013	382	20.4 (22.4)	12.3 (9.9)	<0.001
Platelets [ $\times 10^9$ /L], mean (SD)	418	229.1(108.1)	252.1 (111.5)	0.040	388	228.1 (102.1)	290.2 (115.1)	<0.001
Creatinine [mg/dL], mean (SD)	412	1.26 (1.01)	1.06 (0.76)	0.020	397	1.61 (1.13)	1.10 (0.92)	<0.001
Urea [mg/dL], mean (SD)	375	61.1(39.9)	48.5 (36.5)	0.003	353	80.4 (47.0)	58.4 (40.0)	<0.001
Lactate dehydrogenase [U/L], mean (SD)	388	635.7(577.2)	465.9 (195.2)	0.001	353	532.8 (427.6)	405.9 (172.6)	0.002
Creatine kinase [U/L], median (p25–p75)	321	141 (69–281)	104 (53–181)	0.025	299	119 (47–329)	90 (48–291)	0.144
Aspartate aminotransferase [U/L], median (p25–p75)	385	54 (36–91)	48 (33–78)	0.074	359	47 (25–84)	45 (29–70)	0.794
Alanine aminotransferase [U/L], median (p25–p75)	366	39 (24–59)	40 (27–64)	0.325	337	37 (22–53)	44 (28–68)	0.018
Procalcitonin [ng/mL], median (p25–p75)	333	0.34 (0.17–0.94)	0.23 (0.11–0.50)	0.001	274	0.70 (0.26–2.07)	0.27 (0.10–0.74)	<0.001
C-reactive protein [mg/L], mean (SD)	407	178.5 (109.9)	165.0 (110.4)	0.239	375	160.8 (131.5)	114.4 (110.3)	<0.001
Lactate [mmol/L], median (p25–p75)	371	1.70 (1.15–2.85)	1.33 (1.00–1.90)	0.001	322	2.38 (2.65)	2.0 (2.89)	0.244
Fibrinogen [mg/dL], mean (SD)	296	702.8 (639.2)	706.1 (730.2)	0.969	260	626.0 (279.4)	595.6 (256.5)	0.383
D-dimer [ng/mL], median (p25–p75)	376	1723 (894–4113)	1160 (660–2500)	0.001	360	3619 (1600–16537)	1934 (993–4662)	<0.001

**Table 3** Relationship between Delta SOFA score 0–72 h and mortality.

All patients	<i>n</i>	Dead at 42 days ( <i>n</i> = 152)	Survivor at 42 days ( <i>n</i> = 270)	OR (CI 95%)	<i>p</i>
Delta SOFA score 72 h – ICU admission, mean (SD)	272	1.8 (2.7)	0.7 (2.6)		<0.001
Delta SOFA score 72 h – ICU admission > 0, <i>n</i> (%)	422	78 (43.6)	101 (56.4)	1.76 (1.18–2.64)	0.006
Mechanically ventilated patients	<i>n</i>	Dead at 42 days ( <i>n</i> = 146)	Survivor at 42 days ( <i>n</i> = 196)	OR (CI 95%)	<i>p</i>
Delta SOFA score 72 h – ICU admission, mean (SD)	308	1.7 (2.8)	0.9 (2.8)		<0.001
Delta SOFA score 72 h – ICU admission > 0, <i>n</i> (%)	342	78 (51.3)	74 (48.7)	1.76 (1.18–2.64)	0.006

Median time from hospitalization to ICU admission was 2<sup>1–4</sup> days. Three quadrants were involved on the chest X-ray in 78 patients (18.5%) and the four quadrants in 244 patients (57.8%). Microbiologically documented co-infection at ICU admission was diagnosed in 55 (13%) patients.

The majority of the patients were treated with lopinavir/ritonavir (*n* = 390) and/or hydroxychloroquine (*n* = 338). Remdesivir was used in a very small number of patients (*n* = 8). Interferon beta-1b was used in 202 patients. High doses of corticosteroids (methylprednisolone ≥ 2 mg/kg/day) were administered in 260 (61.6%) patients whereas 166 patients received tocilizumab. Both drugs were used in 126 (29.9%) patients. [Tables 1–4 of the supplementary material](#), show the comparison of different variables in patients treated and not treated with lopinavir/ritonavir, hydroxychloroquine, tocilizumab or Interferon beta-1b.

Overall, 342 (81%) patients were intubated. Vasopressors were used in 333 (78.9%) patients. Fifty (11.8%) patients required renal replacement therapy. One-hundred and forty-nine individuals (35.3%) developed at least one nosocomial infection in the ICU. The most frequent infections were: VAP (103 patients; 24.4%) and catheter-related bloodstream infections (74 patients; 17.5%).

By multivariable Cox proportional analysis, factors independently associated with 42-day mortality were age, APACHE II score, SOFA score at ICU admission >6, lactate dehydrogenase at ICU admission >470 U/L, Use of vasopressors, extrarenal depuration, %lymphocytes 72 h post-ICU admission <6.5%, and thrombocytopenia whereas the use of lopinavir/ritonavir was a protective factor ([Table 3](#)). Because of the noted imbalances in baseline characteristics and clinical situation at admission to the ICU, a Cox regression model was developed introducing the probability calculated by the propensity score in an attempt to ameliorate the impact of observed differences. This analysis also identified therapy with lopinavir/ritonavir as a protective factor for 6-week mortality. "Delta SOFA score 0–72 h was significantly related to mortality in univariate analysis in all patients and mechanically ventilated patients. However, it is not independently associated with mortality at 42 days in both groups of patients ([Table 6, supplementary material](#))."

### Patients on mechanical ventilation

In intubated patients (*n* = 342), ICU mortality: 142/342 (41.5%); 14 days-mortality 77/342 (22.5%); 28 days mortality: 115/342(33.6%), 6-week Mortality 146/342 (42.7%). The median time from ICU admission to intubation was 0 days [0–1]). [Table 4](#) depicts the clinical features of those patients who required invasive mechanical ventilation and their laboratory parameters on day 1 and 3 are shown in [Table 5 \(supplementary material\)](#). As in the entire group, those who died were significantly older and with higher APACHE II and SOFA scores at admission. No substantial imbalances in patients' comorbidities were observed.

The median PaO<sub>2</sub>/FiO<sub>2</sub> ratio on day 1 was 170 [115–236]. The use of ECMO was marginal in this series (only 4 patients; two died). Conversely, proning positioning was used in almost two-thirds of the patients (251/341; 73.6%). Tracheostomy was performed in 43.4% of the intubated patients (145/334).

By multivariable Cox proportional analysis, factors independently associated with 42-day mortality were age, cirrhosis, APACHE II score, First PEEP after intubation >12 cmH<sub>2</sub>O, PaO<sub>2</sub>/FiO<sub>2</sub> 24 h post-intubation <160, extrarenal depuration, neutrophils/lymphocytes ratio 72 h post-ICU admission >14, D-dimer 72 h post-ICU admission >3.400 mg/L, and thrombocytopenia ([Table 3](#)). Of note, use of lopinavir/ritonavir was not included in this model as a protective factor of 1.01 (0.49–2.08) *p* = 0.98.

### Classification of regression tree (CRT)

A decision tree to depict the risk groups for 42-days mortality ([Fig. 2](#)) was built based on CRT analysis. It reached an overall percentage of correct classification of 69.7%. The established risk groups were on a range from 6.1% (APACHE II score ≤ 12 + Age ≤ 62 + PaO<sub>2</sub>/FiO<sub>2</sub> > 160) to 84.6% (APACHE II score > 12 + Extrarenal depuration). Patients with APACHE II score > 12 were ever classified with mortality at 6 weeks higher than 49%.

**Table 4** Multivariate Cox regression analysis of variables associated with mortality at 6 weeks with Propensity Score for lopinavir/ritonavir.

Variables	All patients		Patients on Mechanical ventilation	
	HR (CI 95%)	p	HR (CI 95%)	p
Age (years)	1.04 (1.02–1.06)	<0.001	1.05 (1.03–1.07)	<0.001
Cirrhosis			2.37 (1.02–5.53)	0.045
APACHE II	1.04 (1.02–1.07)	0.002	1.03 (1.02–1.05)	<0.001
SOFA score at ICU admission >6 <sup>a</sup>	1.43 (1.01–2.03)	0.043		
Lactate dehydrogenase at ICU admission >470 U/L <sup>a</sup>	1.57 (1.10–2.23)	0.013		
First PEEP after intubation >12 <sup>a</sup>			2.05 (1.37–3.05)	<0.001
PaO <sub>2</sub> /FiO <sub>2</sub> 24 h post-intubation <160 <sup>a</sup>			1.67 (1.13–2.46)	0.011
SOFA score 72 h post-ICU admission >6 <sup>a</sup>			1.73 (1.12–2.67)	0.014
%Lymphocytes 72 h post-ICU admission <6.5% <sup>a</sup>	1.61 (1.13–2.30)	0.009		
Neutrophils/lymphocytes ratio 72 h post-ICU admission >14 <sup>a</sup>			1.02 (1.01–1.03)	<0.001
Platelets 72 h post-ICU admission <150 × 10 <sup>9</sup> /L <sup>a</sup>	1.89 (1.18–3.03)	0.012	2.53 (1.51–4.27)	<0.001
D-dimer 72 h post-ICU admission >3.400 mg/L <sup>a</sup>			1.67 (1.14–2.47)	0.009
Use of vasopressors	4.04 (1.73–944).	0.001		
Extrarenal deputation	1.85 (1.21–2.84)	0.004	1.79 (1.13–2.82)	0.011
Use of lopinavir/ritonavir	0.52 (0.29–0.93)	0.029		
Propensity score		0.586		

APACHE II: acute physiology, age and Chronic Health Evaluation score; HR: hazard ratio; FiO<sub>2</sub>: fraction of inspired oxygen; ICU: intensive care unit; PEEP: positive end-expiratory pressure; SOFA: Sequential Organ Failure Assessment.

<sup>a</sup> Binary variables calculated using ROC curves. Missing values treated as negative values. See [Table 3s in Supplementary Material](#).

## Discussion

Most published studies to date about critically ill patients with SARS-CoV-2 infection has been retrospective series of patients. This study, by its prospective and multicenter design, with more than 420 patients analyzed, representatively reflects the clinical profile and prognosis of the most severe form of clinical presentation of SARS-CoV-2 pneumonia. It seems transcendent to identify prognosis-related factors to optimize the use of health resources and guide better clinical management. We suggest using clinical tools for helping clinicians, such as the decision-making tree documented in the results in difficult decision-making. We were able to identify a subgroup of patients with very high mortality, there are few critical pathologies in which only with an APACHE II > 12 and the need for extrarenal deputation therapies can be associated with a high mortality. This information may be useful to be considered in decision-making on limitation of life support treatment.

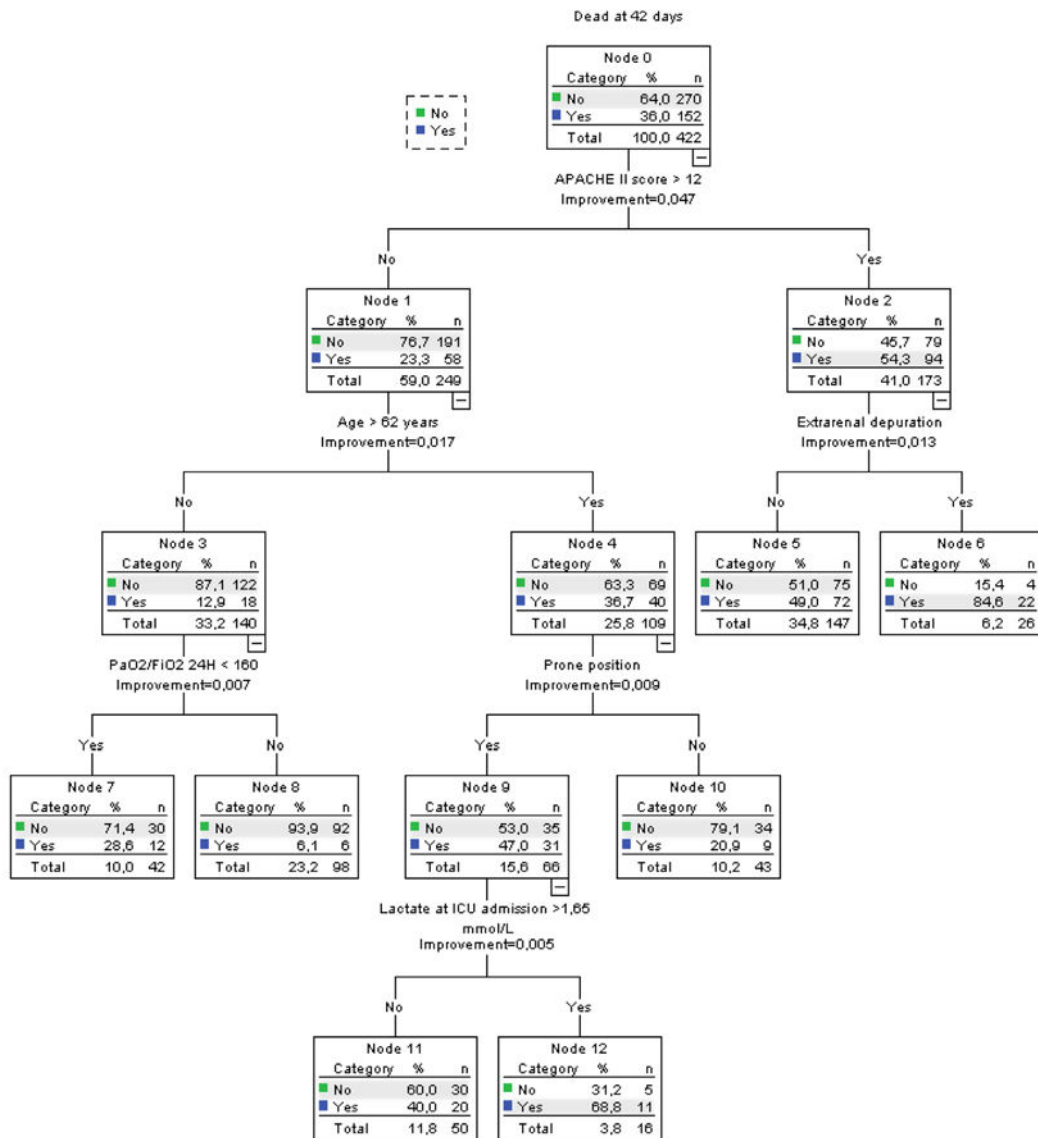
One third of patients admitted to ICU died, with higher mortality of 43% observed, in patients receiving mechanical ventilation. This mortality is below that described in a recent meta-analysis<sup>4</sup> that included more than 14,000 patients in 44 studies, which estimates mortality in ventilated patients by a percentage greater than 80%. Although remarkable heterogeneity was observed in the selected studies, weaknesses in the follow-up of those patients still admitted, and most studies came from the Asian continent, where the published series point to a worrying high

mortality in mechanically ventilated patients.<sup>5–8</sup> The Spanish publications documented to date express short series of no more than 50 patients coinciding with the clinical profile, ventilatory requirements and prognosis described in our study.<sup>9–13</sup> Published series of Italian patients from the Lombardy region<sup>14</sup> document mortality similar to that observed in our study, and in the New York area, a study describes a mortality of 24.5% in mechanically ventilated patients, these results should be analyzed considering the limitation that at that time most continued receiving mechanical ventilation, 72.2% of patients, and had only been discharged from ICU a 3.3% of patients, so mortality can be expected to be higher.<sup>15</sup> In the Seattle series, they documented 50% mortality and there are still being mechanically ventilated patients when they published it.<sup>16</sup>

In a novel way, lopinavir/ritonavir administration is identified as a protective factor. This finding deserves to be interpreted wisely, since there were no differences in the univariate analysis, turns out to be significant in the multivariate analysis of the total cohort of patients but not in the subgroup that received mechanical ventilation. This is the only study group up to our knowledge that provides this evidence. To control the potential weaknesses of an observational study in an environment changing treatment guidelines, we have performed a propensity score analysis, which was included in the final model maintaining as a protective factor the treatment with lopinavir/ritonavir.

Of course, this finding should be endorsed in randomized studies, but it opens up a possibility of treatment in this





VARIABLES GROUP	MORTALITY
APACHE II score > 12 + Extrarenal depuration	84,6%
APACHE II score ≤ 12 + Age > 62 + Prone position + Lactate at ICU admission > 1,65 mmol/L	68,8%
APACHE II score > 12 + NO Extrarenal depuration	49,0%
APACHE II score ≤ 12 + Age > 62 + Prone position + Lactate at ICU admission ≤ 1,65 mmol/L	40,0%
APACHE II score ≤ 12 + Age ≤ 62 + PaO <sub>2</sub> /FiO <sub>2</sub> < 160	28,6%
APACHE II score ≤ 12 + Age > 62 + NO prone position	20,9%
APACHE II score ≤ 12 + Age ≤ 62 + PaO <sub>2</sub> /FiO <sub>2</sub> > 160	6,1%

**Figure 2** The decision tree based on CRT analysis reached an overall percentage of correct classification of 69.7%. The established risk groups were on a range from 6.1% (APACHE II score ≤ 12 + Age ≤ 62 + PaO<sub>2</sub>/FiO<sub>2</sub> > 160) to 84.6% (APACHE II score >12 + Extrarenal depuration). Patients with APACHE II score > 12 were ever classified with mortality at 6 weeks higher than 49%.

entity with so few therapeutic options. The clinical trial of Cao B y cols<sup>17</sup> conducted in 199 patients showed no benefits in treatment, but we must take into account that the population studied is notably far from the clinical profile of critically ill represented in our series. Only one patient was included in the defined category 6 who contemplates hospitalization with mechanical ventilation, ECMO or

both treatments and only 15% within category 5 requiring high flow oxygen therapy or non-invasive ventilation. In addition, randomization occurred 13 days after the onset of symptoms, an average time significantly longer than documented in our series that was 8 days, it seems key as has happened in other infectious diseases for other causes that the administration of antibiotic or antiviral

treatment achieves the best benefits as soon as possible are administered.<sup>18,19</sup>

Recently, RECOVERY study results about lopinavir/ritonavir has been published, conducted at 176 hospitals in the United Kingdom, this study does not demonstrate benefits in terms of survival, but we have to discuss the eligibility of participants with a high number of losses because they did not have treatment available, do not consider it appropriate or were receiving other treatments. In addition, the percentage of critically ill patients was very low and the days after the onset of symptoms when treatment was prescribed exceeded one week.<sup>20</sup>

Unfortunately, the newly demonstrated benefits in viral load reduction, clinical improvement and modulation of inflammatory response with combined administration of lopinavir/ritonavir with interferon and ribavirin<sup>21</sup> barely anecdotally contemplated the inclusion of critically ill patients in their study.

We have not observed benefits in all other antiviral treatments used, hydroxychloroquine and interferon, although the use of remdesivir was minorityly used due to restrictions on its access to critical patients in the early months of the pandemic.

The benefits currently demonstrated<sup>22</sup> were not seen in the subgroup of patients receiving mechanical ventilation although it should be noted that it was not the primary objective of the study. The need for clinical trials specifically targeting the critically ill with respiratory infection with SARS-CoV-2 infection has become a long-awaited necessity.

Administration of corticosteroids at high doses, the percentage of use of which was more than half of patients, showed no benefits in mortality, as did treatment with tocilizumab who received more than one third of patients. Although there are described clinical experiences that point to a potential benefit of tocilizumab in mechanically ventilated patients,<sup>23</sup> we do not observe this effect, a significant limitation of the comparative study of Somers and cols is that the comparative groups were not homogeneous by noting significant differences in age and presence of chronic pathology prior to in addition to lower levels of D-dimer in the treated group. Pending the final publication of the results of the phase 3 COVACTA clinical trial, it appears that COVACTA has not demonstrated benefits in terms of survival.<sup>24</sup>

The use of corticosteroids in our patient series corresponds to the prior period of publication of the clinical trial that has associated the administration of dexamethasone at doses of 6 mg with mortality benefits,<sup>25</sup> a guideline that is far from that currently recommended was used. Research continues on the potential benefit that could be associated with higher doses of corticosteroid treatment.<sup>26</sup> Our findings coincide with the lack of solid evidence currently supporting the widespread use of these treatments in critical patients.

During the recruitment period, empiricism capitalized on treatments of severe forms of the disease, eager to obtain new evidence from ongoing clinical trials,<sup>27</sup> this has conditioned significant variability in clinical practice.<sup>28</sup> Aware of this reality we present in a novel way a decision-making tree analysis based on the main factors related independently to mortality.

Age, severity at ICU admission measured by APACHE II and organic failure determined by a SOFA > value of

6 points, along with vasopressor requirements or renal replacement therapy have been identified as predictor factors of mortality at six weeks, in line with findings from other published series.<sup>5,7,8</sup> With regard to laboratory tests, we must comment as a limitation that the levels of ferritin, whose role in severe SARS-CoV-2 infection is to be clarified,<sup>29</sup> and interleukin-6,<sup>30</sup> that we know have been linked to the inflammatory response and severity of the disease, were not collected in the database. Registration began in the early days of the pandemic, so most of the participating centres did not have the possibility of measuring them and the prospective design of the study conditioned that we had not incorporated it later. They have been identified as prognostic factors presenting with lymphopenia at admission and/or elevated levels of lactate dehydrogenase (LDH) related to increased mortality. The presence of lymphopenia at admission has been linked to the need to ICU admission,<sup>31,32</sup> but there are also authors who associate it with greater severity, need for mechanical ventilation and increased mortality.<sup>33,34</sup> Higher levels of LDH have been reported in the most severe forms of SARS-CoV-2 infection and have even correlated the drop in their levels with the negativization of the virus PCR and a better prognosis,<sup>35</sup> although there are references linking high levels of LDH with the most severe forms of clinical presentation<sup>36,37</sup> we present as an independent mortality factor that their admission levels are higher than 470 U/L.

In the multivariate analysis carried out in the subpopulation of mechanically ventilated patients have been identified as independent mortality factors at six weeks age, severity measured by APACHE II upon ICU admission, history of cirrhosis, the need for renal replacement therapies and thrombopenia along with the persistence of organic failure at 72 h of admission as measured by SOFA > 6. In addition, to the severity of respiratory failure determined by PEEP needs within the first 24 h after intubation and PaO<sub>2</sub>/FiO<sub>2</sub> ratio less than 160. Mortality described in our series approaches, being somewhat higher, to the estimation of Berlin definition of respiratory distress,<sup>38</sup> that established in moderate grades with PaO<sub>2</sub>/FiO<sub>2</sub> between 100 and 200 mortality of 32%; 95% CI, 29–34% increasing to 45%; 95% CI, 42–48% in those classified as severe with PaO<sub>2</sub>/FiO<sub>2</sub> less than 100.

With regard to laboratory tests, D dimer levels >3400 mg/L and neutrophil/lymphocyte ratio >14–72 h of ICU entry are identified as mortality factors. These findings at 72 h of ICU admission express a lack of response to support treatments instituted when entering ICU and therefore partly a therapeutic failure associated with increased mortality.

The neutrophil/lymphocyte ratio has been used as an inflammatory state factor with prognostic value in various pathologies,<sup>39,40</sup> not all of an infectious nature, although it is in sepsis that it has been identified as a prognostic factor,<sup>41</sup> the fact that the most severe forms of clinical presentation of SARS-CoV-2 infection develop sepsis can justify our results that identify this marker at 72 h with the highest mortality when it is >of 14. There are authors who have described this parameter as an independent mortality factor in respiratory infection due to SARS-CoV-2, especially in males,<sup>42</sup> a recent meta-analysis<sup>43</sup> identifies it as a prognostic factor in this disease.

In a novel way, we provide this finding in critical patients, aware that this is an inexpensive laboratory measure,

accessible in most ICU, and reflecting the intensity of the inflammatory response and we have identified it as an independent mortality factor.

D dimer levels at hospital admission have been linked as a predictor of mortality,<sup>7,44,45</sup> from an analytical point of view it remains to be explained what the cut-off points are, their need to be adjusted by age<sup>46</sup> and it seems mandatory that the units of measurement and how to obtain it from the different studies be specified in order to be compared.<sup>47</sup> High levels at 72 h of admission were associated in our series to higher mortality.

The main limitation of the study derives from the timing of the study's design, which being at first of pandemic time, no variables that were later demonstrated to have predicted value were included in the study protocol. We do not have the levels of ferritin, interleukin 6 nor was treatment was collected with anticoagulant therapy. Other limitations were the lack of a standard definition of comorbidities and the definition used to classify bacterial co-infection, with the proposed criteria it is not possible to detect co-infection due to atypical bacteria. From the point of view of statistical analysis we acknowledge a limitation derived from the use of the transformation of quantitative variables into dichotomous variables to facilitate multivariate analysis, by the assumption of lost values as negative. Another limitation given the abruptness of the pandemic is the absence of unified criteria for ICU admission and drug use, which can make it difficult to interpret the data. However, we consider this to be currently the widest series of critical patients collected prospectively and highly representatively for the multicenter participation involving most of the ICU in our community, belonging to hospitals of different levels of care. Identifying mortality-related factors at six weeks in critically ill patients will help the clinician stratify risk and make decisions. The uncertainty of clinical practice in this new disease<sup>48</sup> can be fought applying contingency plan for the intensive care services<sup>49</sup> based on the documentation of clinical experiences such as the one we present, and from them with the design of research studies in well-designed critical patients aimed at solving challenges about treatment that remain unresolved today.

### Authors' contribution

AE is the project coordinator, designed the study protocol and contacted the researchers. He managed approval by the Ethics Committee of Inquiry. AE has collected data from researchers and JLGG has performed statistical analysis. AE, JLGG and JG have written the contents of the manuscript. All researchers have participated in the inclusion of cases and have reviewed the version of the manuscript.

### Ethics approval

Because of the nature and contact restrictions of this pandemic disease, the informed consent was obtained from the patient when it was possible or from the relatives by a phone call with or without a complementary mail, and it was registered in the medical history. The Ethical Committee of Investigation in Cádiz [SAM-COVUCI-2020-01] approved the study protocol.

### Funding

None declared.

### Conflict of interest

None declared.

### Acknowledgements

The study coordinator would like to thank Ms. Monica Saldaña on behalf of the SAMIUC Infectious Diseases Working Group for their help in designing the study protocol in the worst days of the pandemic.

### Appendix A. Supplementary data

Supplementary data associated with this article can be found, in the online version, at [doi:10.1016/j.medin.2021.02.013](https://doi.org/10.1016/j.medin.2021.02.013).

### References

- Zhu N, Zhang D, Wang W, Li X, Yang B, Song J, et al. China Novel Coronavirus Investigating and Research Team. A novel coronavirus from patients with pneumonia in China, 2019. *N Engl J Med*. 2020;382:727–33, <http://dx.doi.org/10.1056/NEJMoa2001017>.
- Chen N, Zhou M, Dong X, Qu J, Gong F, Han Y, et al. Epidemiological and clinical characteristics of 99 cases of 2019 novel coronavirus pneumonia in Wuhan China: a descriptive study. *Lancet*. 2020;395:507–13, [http://dx.doi.org/10.1016/S0140-6736\(20\)30211-7](http://dx.doi.org/10.1016/S0140-6736(20)30211-7).
- Organización Mundial de la Salud. WHO Coronavirus Disease (COVID-19) Dashboard. Retrieved 14 December 2020. <https://covid19.who.int/>.
- Potere N, Valeriani E, Candeloro M, Tana M, Porreca E, Abbate A, et al. Acute complications and mortality in hospitalized patients with coronavirus disease 2019: a systematic review and meta-analysis. *Crit Care*. 2020;24:389, <http://dx.doi.org/10.1186/s13054-020-03022-1>.
- Xu J, Yang X, Yang L, Zou X, Wang Y, Wu Y, et al. Clinical course and predictors of 60-day mortality in 239 critically ill patients with COVID-19: a multicenter retrospective study from Wuhan, China. *Crit Care*. 2020 Jul 6;24:394, <http://dx.doi.org/10.1186/s13054-020-03098-9>.
- Hua J, Qian C, Luo Z, Li Q, Wang F. Invasive mechanical ventilation in COVID-19 patient management: the experience with 469 patients in Wuhan. *Crit Care*. 2020;24:348, <http://dx.doi.org/10.1186/s13054-020-03044-9>.
- Zhou F, Yu T, Du R, Fan G, Liu Y, Liu Z, et al. Clinical course and risk factors for mortality of adult inpatients with COVID-19 in Wuhan China: a retrospective cohort study. *Lancet*. 2020;395:1054–62, [http://dx.doi.org/10.1016/S0140-6736\(20\)30566-3](http://dx.doi.org/10.1016/S0140-6736(20)30566-3).
- Yang X, Yu Y, Xu J, Shu H, Xia J, Liu H, et al. Clinical course and outcomes of critically ill patients with SARS-CoV-2 pneumonia in Wuhan China: a single-centered, retrospective, observational study. *Lancet Respir Med*. 2020;8:475–81, [http://dx.doi.org/10.1016/S2213-2600\(20\)30079-5](http://dx.doi.org/10.1016/S2213-2600(20)30079-5).
- Rodríguez A, Moreno G, Gómez J, Carbonell R, Picó-Plana E, Benavent Bofill C, et al. Severe infection due to the SARS-CoV-2 coronavirus: experience of a tertiary hospital with

- COVID-19 patients during the 2020 pandemic. *Med Intensiva*. 2020;44:525–33.
10. Ramírez P, Gordón M, Martín-Cerezuela M, Villarreal E, Sancho E, Padrós M, et al. Acute respiratory distress syndrome due to COVID-19. Clinical and prognostic features from a medical Critical Care Unit in Valencia, Spain. *Med Intensiva*. 2020.
  11. Serrano-Martínez JL, Machado-Casas JF, Redondo-Orts M, Manzano-Manzano F, Castaño-Pérez J, Pérez-Villares JM. Características y resultados de una serie de 59 pacientes con neumonía grave por COVID-19 ingresados en UCI. *Med Intensiva* [Internet]. Available from: <http://www.medintensiva.org/es-caracteristicas-resultados-una-serie-59-avance-S021056912-0301844> [cited 2020 August 25].
  12. Vidal-Cortés P, Del Río-Carballo L, Nieto-Del Olmo J, Prol-Silva E, Tizón-Varela AI, Rodríguez-Vázquez A, et al. COVID-19 and Acute Respiratory Distress Syndrome Impact of corticosteroid treatment and predictors of poor outcome. *Rev Esp Quimioter*. 2020.
  13. Barrasa H, Rello J, Tejada S, Martín A, Balziskueta G, Vinuesa C, et al. SARS-CoV-2 in Spanish Intensive Care Units: early experience with 15-day survival in Vitoria. *Anaesth Crit Care Pain Med*. 2020;39:553–61.
  14. Grasselli G, Zangrillo A, Zanella A, Antonelli M, Cabrini L, Castelli A, et al. Baseline characteristics and outcomes of 1591 patients infected with SARS-CoV-2 admitted to ICUs of the Lombardy Region Italy. *JAMA*. 2020, <http://dx.doi.org/10.1001/jama.2020.5394> [Published online 6 April].
  15. Richardson S, Hirsch JS, Narasimhan M, Crawford JM, McGinn T, Davidson KW, et al. Presenting characteristics comorbidities, and outcomes among 5700 patients hospitalized with COVID-19 in the New York City area. *JAMA*. 2020;323:2052–9, <http://dx.doi.org/10.1001/jama.2020.6775>.
  16. Bhatraju PK, Ghassemieh BJ, Nichols M, Kim R, Jerome KR, Nalla AK, et al. Covid-19 in critically ill patients in the Seattle Region – case series. *N Engl J Med*. 2020;382:2012–22, <http://dx.doi.org/10.1056/NEJMoa2004500>.
  17. Cao B, Wang Y, Wen D, Liu W, Wang J, Fan G, et al. A trial of lopinavir-ritonavir in adults hospitalized with severe covid-19. *N Engl J Med*. 2020;382:1787–99, <http://dx.doi.org/10.1056/NEJMoa2001282>.
  18. Daniel P, Rodrigo C, Mckeever TM, Woodhead M, Welham S, Lim WS. Time to first antibiotic and mortality in adults hospitalised with community-acquired pneumonia: a matched-propensity analysis. *Thorax*. 2016;71:568–70.
  19. Uyeki TM, Bernstein HH, Bradley JS, Englund JA, File TM, Fry AM, et al. Clinical practice guidelines by the Infectious Diseases Society of America: 2018 update on diagnosis, treatment, chemoprophylaxis, and institutional outbreak management of seasonal influenza. *Clin Infect Dis*. 2019;68:895–902.
  20. RECOVERY Collaborative Group. Lopinavir–ritonavir in patients admitted to hospital with COVID-19 (RECOVERY): a randomised, controlled, open-label, platform trial. *Lancet*. 2020, [http://dx.doi.org/10.1016/S0140-6736\(20\)31042-4](http://dx.doi.org/10.1016/S0140-6736(20)31042-4) [Published online 5 October 2020].
  21. Hung IF, Lung KC, Tso EY, Liu R, Chung TW, Chu MY, et al. Triple combination of interferon beta-1b, lopinavir-ritonavir, and ribavirin in the treatment of patients admitted to hospital with COVID-19: an open-label, randomised, phase 2 trial. *Lancet*. 2020;395:1695–704, [http://dx.doi.org/10.1016/S0140-6736\(20\)31042-4](http://dx.doi.org/10.1016/S0140-6736(20)31042-4).
  22. Beigel JH, Tomashek KM, Dodd LE. Remdesivir for the treatment of Covid-19 – preliminary report. *N Engl J Med*. 2020, <http://dx.doi.org/10.1056/NEJMoa2007764>.
  23. Somers EC, Eschenauer GA, Troost JP, Golob JL, Gandhi TN, Wang L, et al. Tocilizumab for treatment of mechanically ventilated patients with COVID-19. *Clin Infect Dis*. 2020, <http://dx.doi.org/10.1093/cid/ciaa954>.
  24. <https://clinicaltrials.gov/ct2/show/NCT04320615>
  25. Horby P, Lim WS, Emberson JR, Mafham M, Bell JL, Linsell L, et al. Dexamethasone in hospitalized patients with covid-19 – preliminary report. *N Engl J Med*. 2020, <http://dx.doi.org/10.1056/NEJMoa2021436>.
  26. Maskin LP, Olarte GL, Palizas F Jr, Velo AE, Lurbet MF, Bonelli I, et al. High dose dexamethasone treatment for Acute Respiratory Distress Syndrome secondary to COVID-19: a structured summary of a study protocol for a randomised controlled trial. *Trials*. 2020;21:743, <http://dx.doi.org/10.1186/s13063-020-04646-y> [Published 26 August 2020].
  27. Estella Á, Garnacho-Montero J. From empiricism to scientific evidence in antiviral treatment in severe cases of coronavirus infection in times of epidemic [published online ahead of print, 2020 Apr 22]. *Med Intensiva*. 2020;S0210-5691:30116–9, <http://dx.doi.org/10.1016/j.medin.2020.04.009>.
  28. Azoulay E, de Waele J, Ferrer R, Staudinger T, Borkowska M, Povoia P, et al. International variation in the management of severe COVID-19 patients. *Crit Care*. 2020;24:486, <http://dx.doi.org/10.1186/s13054-020-03194-w> [Published online 5 August 2020].
  29. Feld J, Tremblay D, Thibaud S, Kessler A, Naymagon L. Ferritin levels in patients with COVID-19: a poor predictor of mortality and hemophagocytic lymphohistiocytosis [published online ahead of print, 2020 Aug 13]. *Int J Lab Hematol*. 2020, <http://dx.doi.org/10.1111/ijlh.13309>.
  30. Zhu J, Pang J, Ji P, Zhong Z, Li H, Li B, et al. Elevated interleukin-6 is associated with severity of COVID-19: a meta-analysis. *J Med Virol*. 2020, <http://dx.doi.org/10.1002/jmv.26085>.
  31. Fan BE, Chong VCL, Chan SSW, Lim GH, Lim KGE, Tan GB, et al. Hematologic parameters in patients with COVID-19 infection. *Am J Hematol*. 2020, <http://dx.doi.org/10.1002/ajh.25774>.
  32. Huang C, Wang Y, Li X, Ren L, Zhao J, Hu Y, et al. Clinical features of patients infected with 2019 novel coronavirus in Wuhan, China. *Lancet*. 2020;395:497–506.
  33. Guan WJ, Ni ZY, Hu Y, Liang WH, Ou CQ, He JX, et al. Clinical characteristics of coronavirus disease 2019 in China. *N Engl J Med*. 2020;382:1708–20, <http://dx.doi.org/10.1056/NEJMoa2002032>.
  34. Deng Y, Liu W, Liu K, Fang YY, Shang J, Zhou L, et al. Clinical characteristics of fatal and recovered cases of coronavirus disease 2019 (COVID-19) in Wuhan, China: a retrospective study. *Chin Med J (Engl)*. 2020, <http://dx.doi.org/10.1097/CM9.0000000000000824>.
  35. Zhou F, Yu T, Du R, Fan G, Liu Y, Liu Z, et al. Clinical course and risk factors for mortality of adult inpatients with COVID-19 in Wuhan China: a retrospective cohort study. *Lancet*. 2020;395:1054–62.
  36. Yuan J, Zou R, Zeng L, Kou S, Lan J, Li X, et al. The correlation between viral clearance and biochemical outcomes of 94 COVID-19 infected discharged patients. *Inflamm Res*. 2020;69:599–606, <http://dx.doi.org/10.1007/s00011-020-01342-0>.
  37. Zheng Z, Peng F, Xu B, Zhao J, Liu H, Peng J, et al. Risk factors of critical & mortal COVID-19 cases: a systematic literature review and meta-analysis. *J Infect*. 2020;81:e16–25, <http://dx.doi.org/10.1016/j.jinf.2020.04.021>.
  38. ARDS Definition Task Force, Ranieri VM, Rubenfeld GD, Thompson BT, Ferguson ND, Caldwell E, et al. Acute respiratory distress syndrome: the Berlin Definition. *JAMA*. 2012;307:2526–33, <http://dx.doi.org/10.1001/jama.2012.5669>.
  39. Afari ME, Bhat T. Neutrophil to lymphocyte ratio (NLR) and cardiovascular diseases: an update.

- Expert Rev Cardiovasc Ther. 2016;14:573–7, <http://dx.doi.org/10.1586/14779072.2016.1154788>.
40. Çalışkan S, Sungur M, Kaba S, Özsoy E, Koca O, Öztürk Mİ. Neutrophil-to-lymphocyte ratio in renal cell carcinoma patients. *Folia Med (Plovdiv)*. 2018;60:553–7, <http://dx.doi.org/10.2478/folmed-2018-0037>.
41. Huang Z, Fu Z, Huang W, Huang K. Prognostic value of neutrophil-to-lymphocyte ratio in sepsis: a meta-analysis. *Am J Emerg Med*. 2020;38:641–7, <http://dx.doi.org/10.1016/j.ajem.2019.10.023>.
42. Liu Y, Du X, Chen J, Jin Y, Peng LHXH, et al. Neutrophil-to-lymphocyte ratio as an independent risk factor for mortality in hospitalized patients with COVID-19. *J Infect*. 2020;81:e6–12, <http://dx.doi.org/10.1016/j.jinf.2020.04.002>.
43. Lagunas-Rangel FA. Neutrophil-to-lymphocyte ratio and lymphocyte-to-C-reactive protein ratio in patients with severe coronavirus disease 2019 (COVID-19): a meta-analysis [published online ahead of print, 2020 Apr 3]. *J Med Virol*. 2020, <http://dx.doi.org/10.1002/jmv.25819>.
44. Yao Y, Cao J, Wang Q, Shi Q, Liu K, Luo Z, et al. D-dimer as a biomarker for disease severity and mortality in COVID-19 patients: a case control study. *Intensive Care*. 2020;8:49, <http://dx.doi.org/10.1186/s40560-020-00466-z>, eCollection 2020.
45. Zhang L, Yan X, Fan Q, Liu H, Liu X, Liu Z, et al. D-dimer levels on admission to predict in-hospital mortality in patients with Covid-19. *J Thromb Haemost*. 2020;18:1324–9, <http://dx.doi.org/10.1111/jth.14859>.
46. Roncon L, Zuin M, Zonin P. Age-adjusted D-dimer cut-off levels to rule out venous thromboembolism in COVID-19 patients. *Thromb Res*. 2020;190:102, <http://dx.doi.org/10.1016/j.thromres.2020.04.021>.
47. Favaloro EJ, Thachil J. Reporting of D-dimer data in COVID-19: some confusion and potential for misinformation. *Clin Chem Lab Med*. 2020;58:1191–9, <http://dx.doi.org/10.1515/cclm-2020-0573>.
48. Díaz E, Amézaga Menéndez R, Vidal Cortés P, Escapa MG, Suberviola B, Serrano Lázaro A, et al. Pharmacological treatment of COVID-19: narrative review of the Working Group in Infectious Diseases and Sepsis (GTEIS) and the Working Groups in Transfusions and Blood Products (GTTH). *Med Intensiva*. 2020, <http://dx.doi.org/10.1016/j.medin.2020.06.017>. S0210-5691(20)30247-3.
49. Rascado Sedes P, Ballesteros Sanz MA, Bodí Saera MA, Carrasco Rodríguez-Rey LF, Castellanos Ortega A, Catalán González M, et al. Contingency plan for the intensive care services for the COVID-19 pandemic. *Med Intensiva*. 2020.